

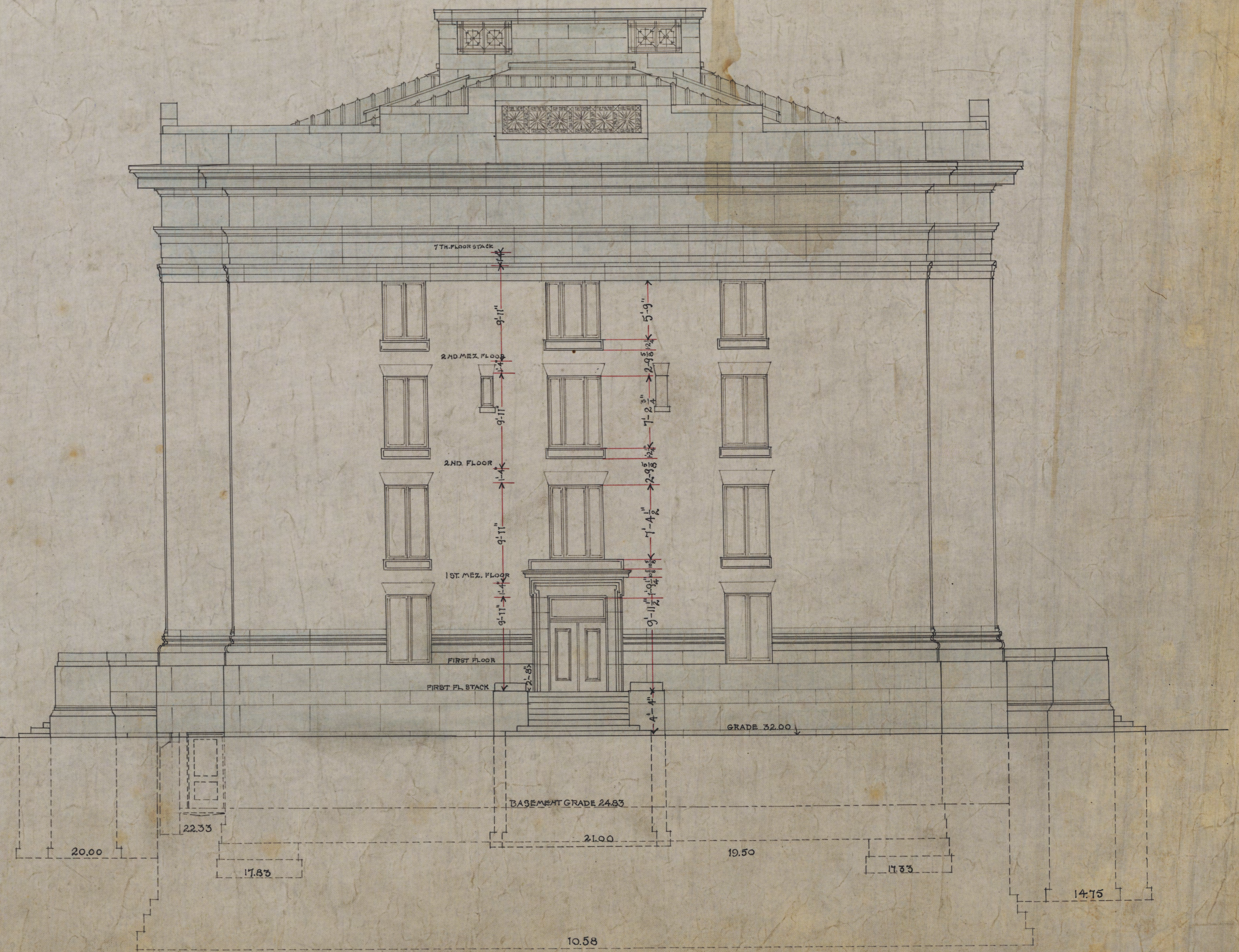
LAW SCHOOL BUILDING  
FOR  
HARVARD UNIVERSITY  
CAMBRIDGE, MASS.

SHEPLEY, RUTAN & COOLIDGE, ARCHITECTS  
BOSTON, MASS.

11.



SOUTH ELEVATION  
SCALE  $\frac{1}{8}'' = 1'-0''$



NORTH ELEVATION  
SCALE  $\frac{1}{8}'' = 1'-0''$

573-001 578-12