

KENNEDY SCHOOL of GOVERNMENT

HARVARD UNIVERSITY

LITTAUER BUILDING

PENTHOUSE STAIR

SCALE: 1/8" = 1'-0"

JOB NO: 9539

DRAWN: N.G.B.

DATE: 1/17/96

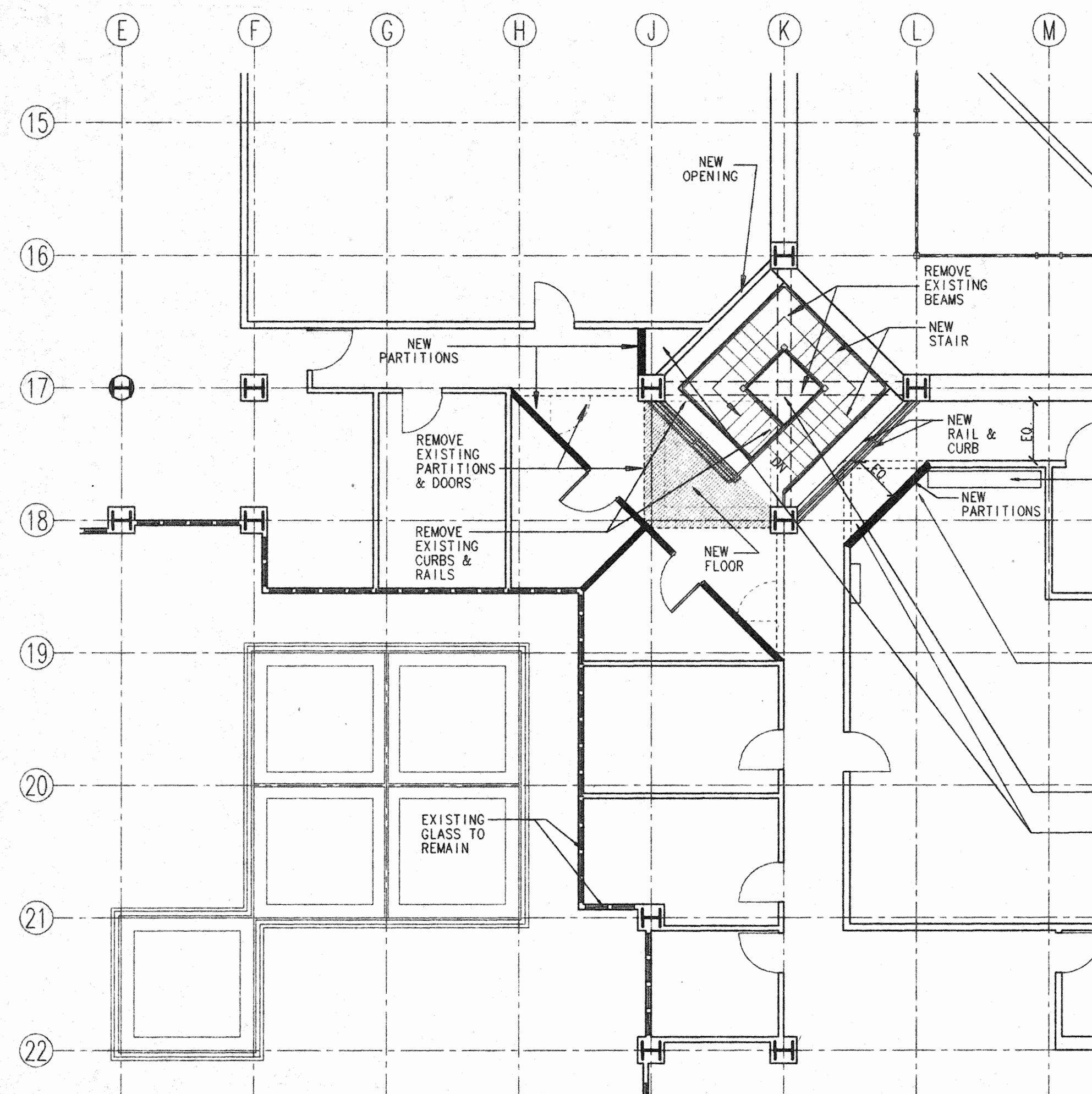
FILE NAME: 9539\A1-6

REVISIONS:

PARTIAL THIRD & FOURTH FLOOR PLAN OPTION - A

ARCHITECTURAL RESOURCES CAMBRIDGE INC  
140 MOUNT AUBURN ST  
CAMBRIDGE MA 02138  
TEL (617) 547-2200  
FAX (617) 547-7222

A-1.1



PARTIAL FOURTH FLOOR PLAN

SCALE: 1/8" = 1'-0"

ELECTRICAL NOTES:

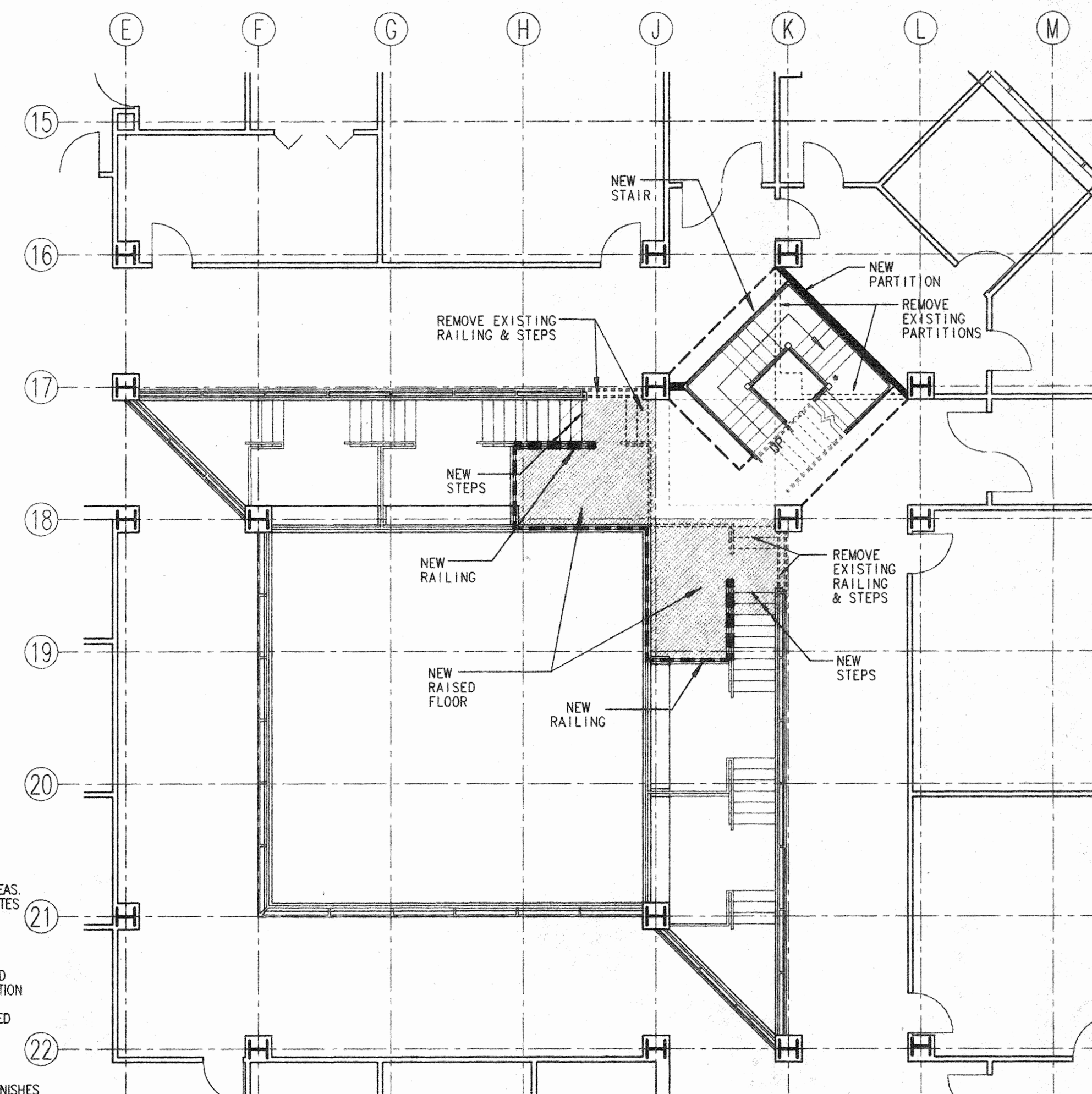
- 1.) RELOCATE ELECTRICAL EQUIPMENT LOCATED IN THIS CORNER THAT INTERFERES WITH NEW STAIR. RELOCATED ITEMS SHALL INCLUDE ALL FEEDERS, CONDUITS, BRANCH CIRCUITS, WIRING, 480 VOLTS LIGHTING PANEL NO. L4-1, 208 VOLT RECEPTACLE PANEL NO. RA-1, 50 KVA STEP DOWN TRANSFORMER, 225 AMPERE ENCLOSED CIRCUIT BREAKER, VOICE/DATA WIRING AND PLYWOOD BACKBOARD.
- 2.) ALL EXISTING LIGHTING FIXTURES THAT INTERFERE WITH NEW STAIR SHALL BE RELOCATED OR REMOVED AS DIRECTED BY THE ARCHITECT.
- 3.) RELOCATE THE EXISTING LIGHTING CONTROL SWITCHES AT THESE TWO LOCATIONS, ARRANGE THE ASSOCIATED WIRING ACCORDINGLY.
- 4.) PROVIDE NEW LIGHTING AS REQUIRED IN MECHANICAL ROOM AND RENOVATED FOURTH FLOOR CORRIDOR AREAS.
- 5.) RELOCATE EXISTING ELECTRICAL PANEL (ALSO SEE NOTES ABOUT OTHER ELECTRICAL EQUIPMENT).

MECHANICAL NOTES:

- 1.) EXISTING HVAC SYSTEM TO BE MODIFIED AS REQUIRED TO ACCOMMODATE THIRD AND FOURTH FLOOR RENOVATION WORK.
- 2.) PROVIDE NEW TOILET ROOMS INCLUDING ALL REQUIRED PLUMBING FIXTURES AND MECHANICAL VENTING.

ARCHITECTURAL FINISH NOTES:

- 1.) PROVIDE NEW FINISHES TO MATCH EXISTING. NEW FINISHES ON FOURTH FLOOR SHALL INCLUDE REPLACEMENT OF CARPET, BASE, AND CEILING IN PUBLIC CORRIDORS AREAS.



PARTIAL THIRD FLOOR PLAN

SCALE: 1/8" = 1'-0"

LEGEND

