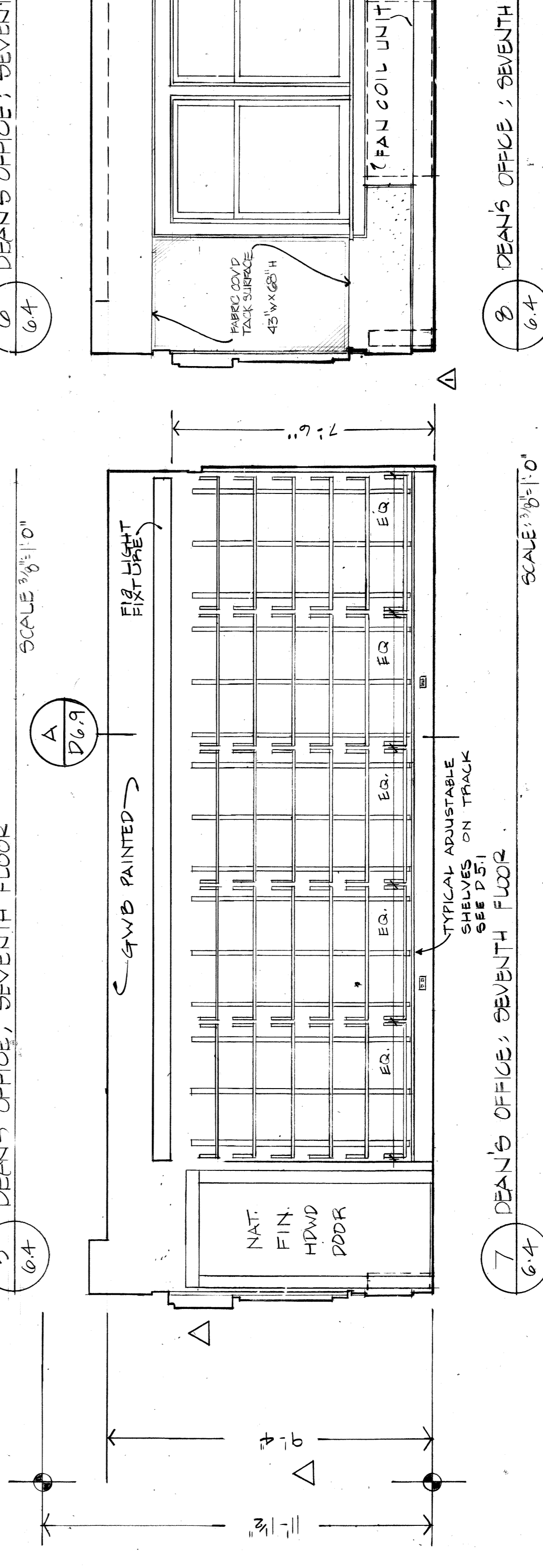
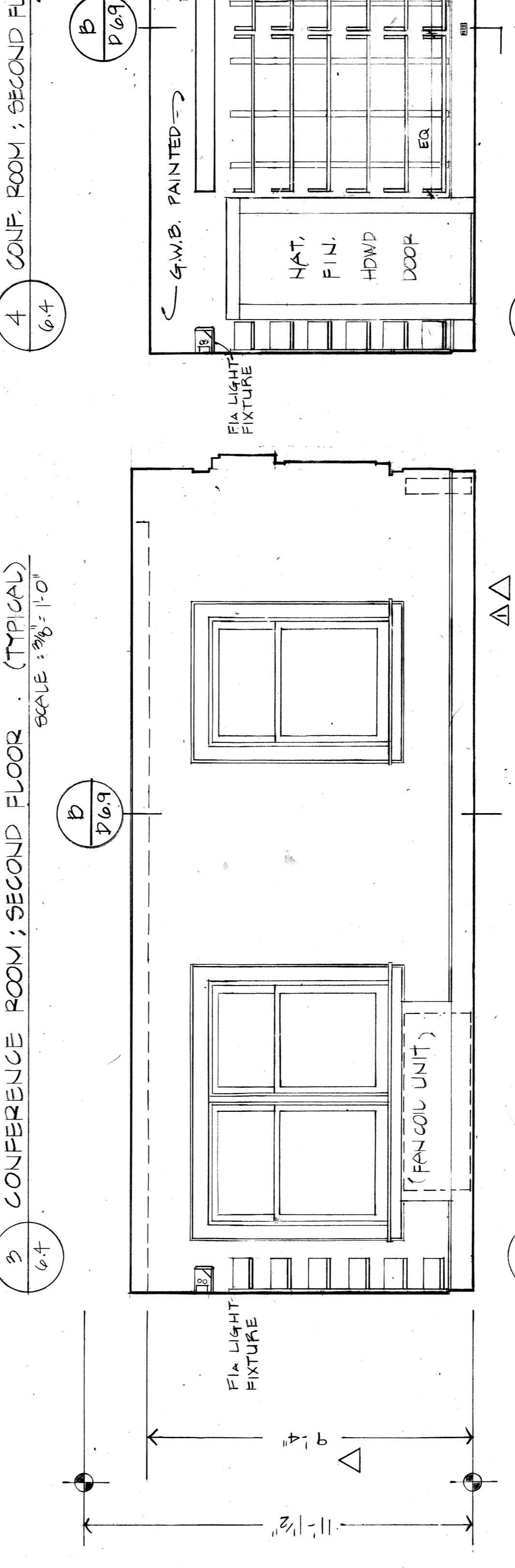
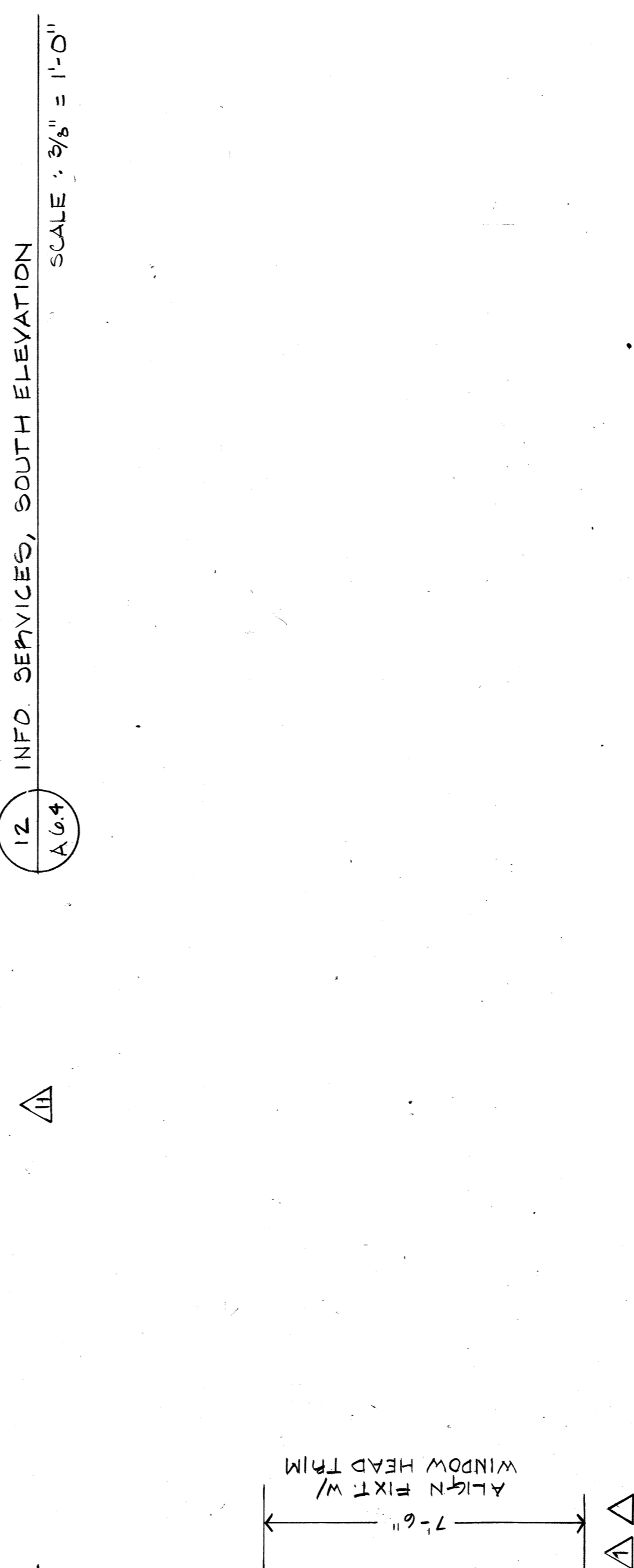
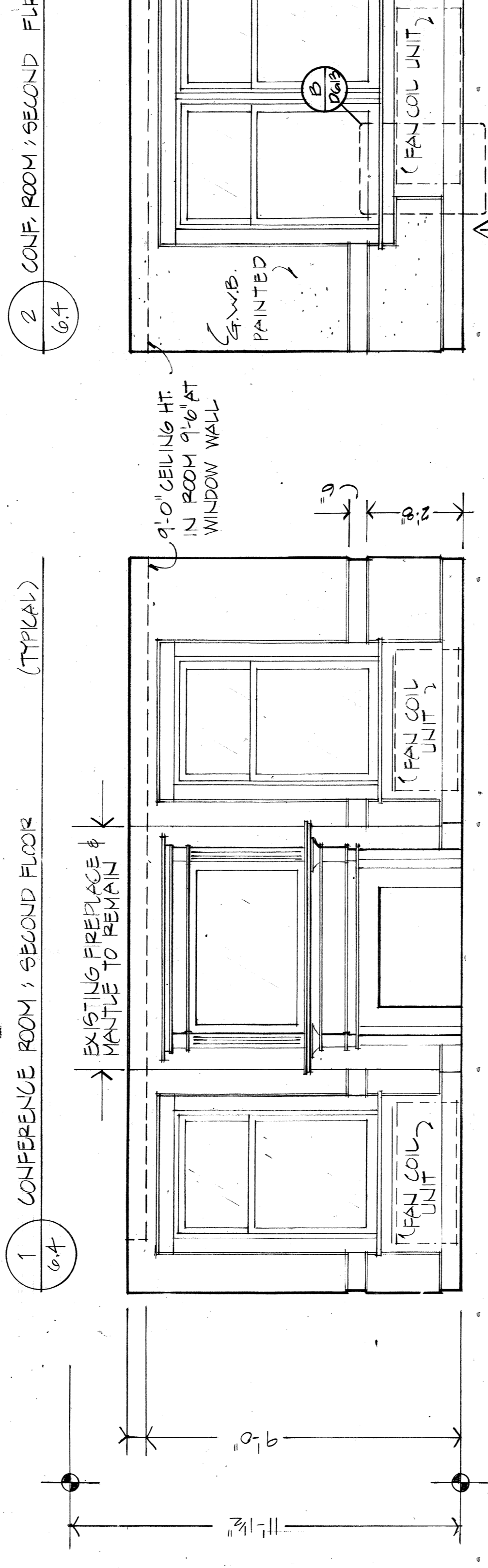
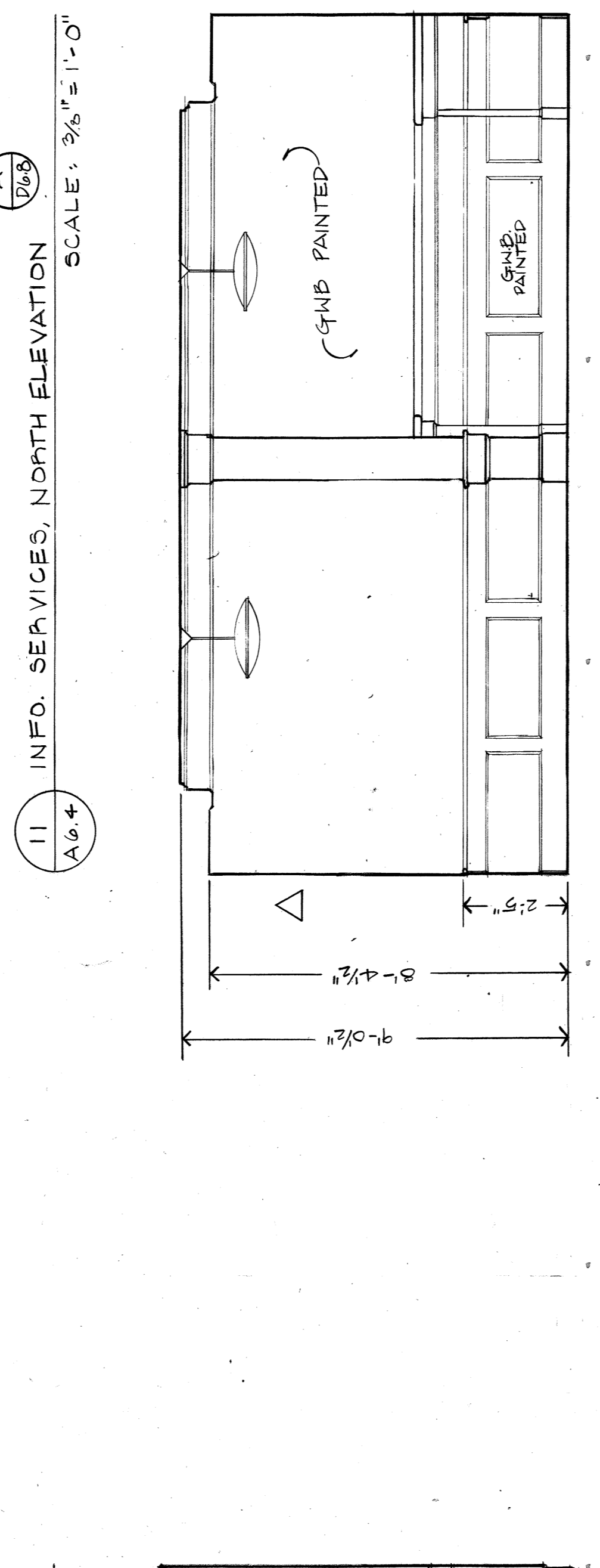
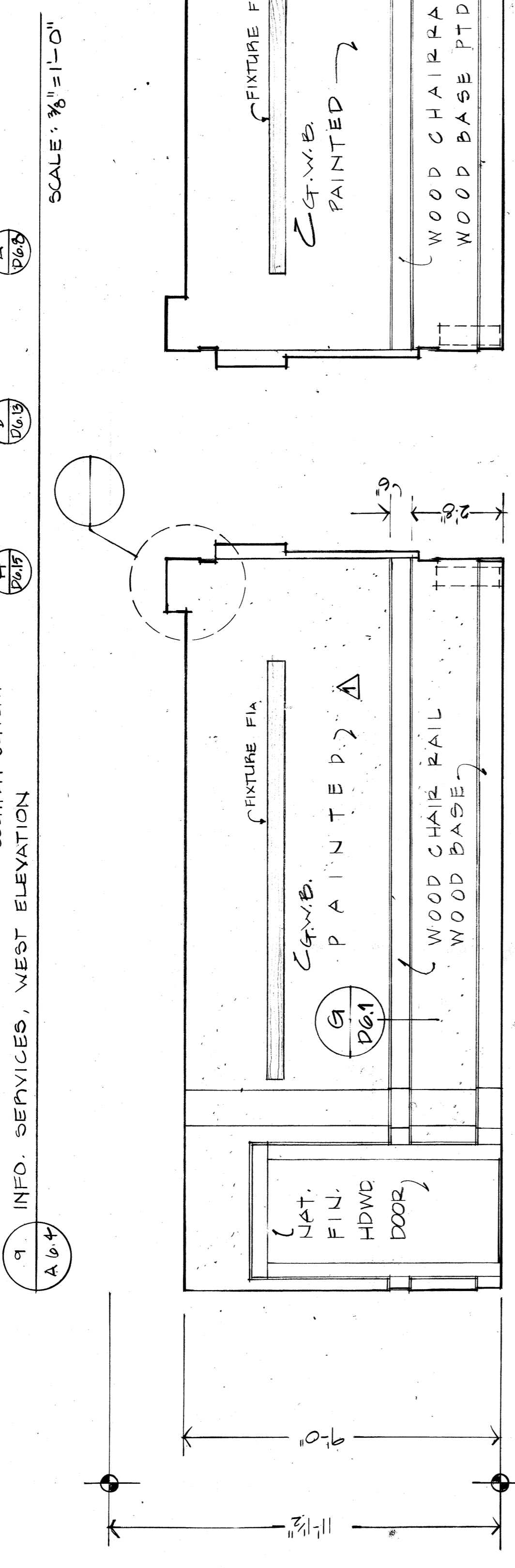
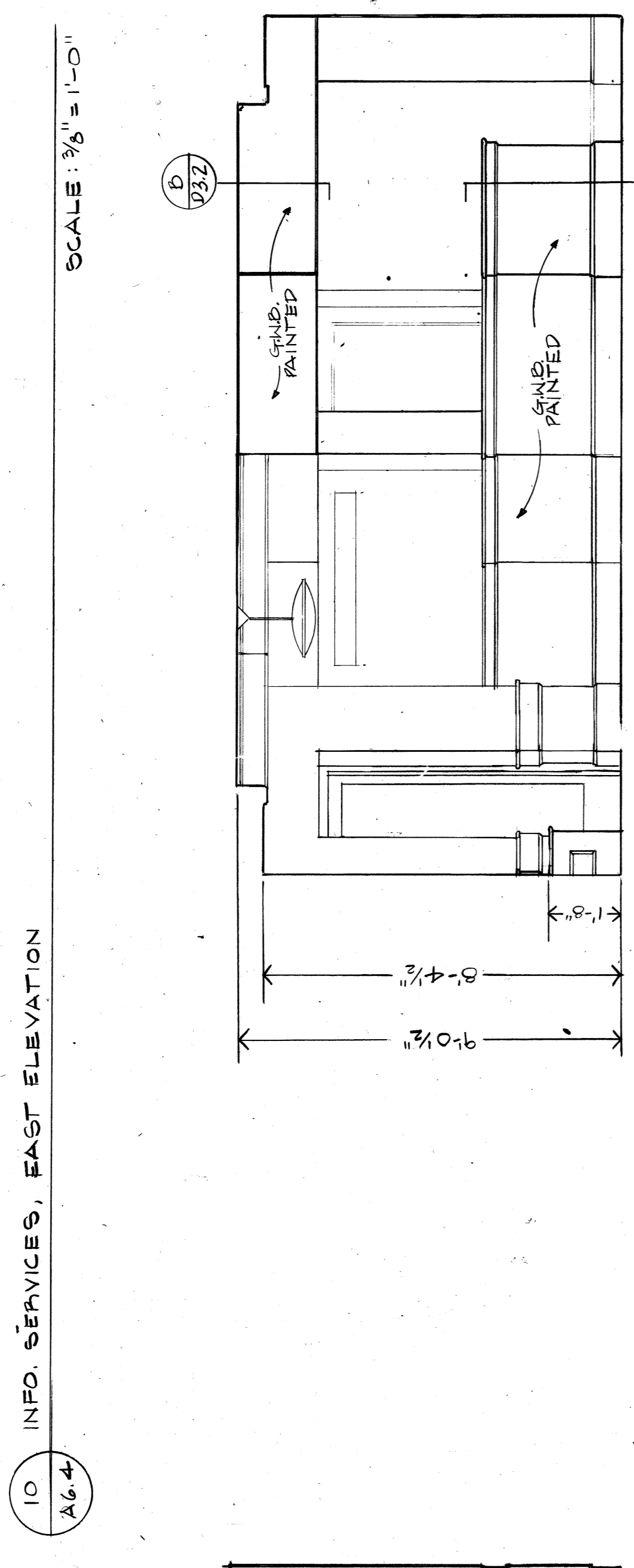
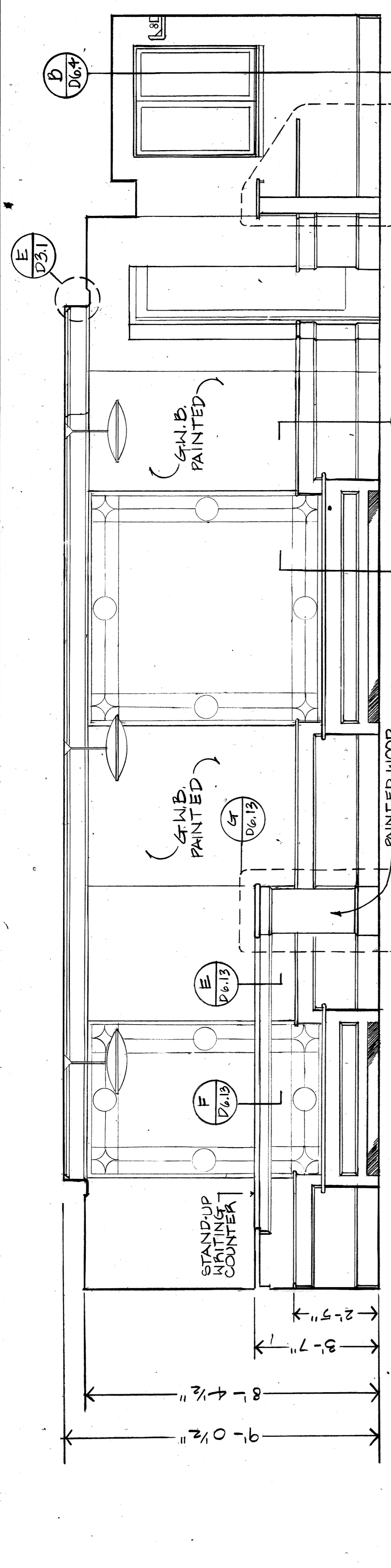
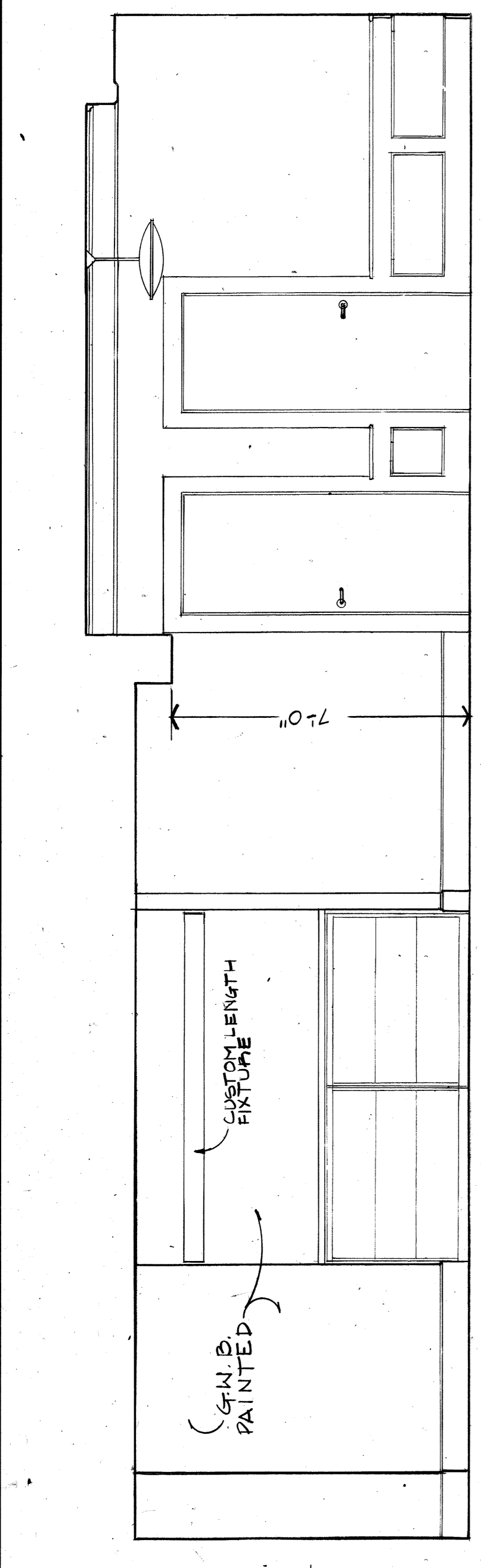


**BENJAMIN THOMPSON & ASSOCIATES, INC.**  
 ARCHITECTURE, PLANNING, AND URBANISM  
 ONE STORY STREET  
 CAMBRIDGE, MA 02139  
 (617) 552-0800 FAX (617) 661-9213, 668-9023

**Cosentini Consulting Engineers**  
 44 Brattle Street  
 Cambridge, Massachusetts 02138  
 (617) 876-3830 FAX (617) 876-6647

**LeMessurier Consultants**  
 1033 Massachusetts Avenue  
 Cambridge, Massachusetts 02138  
 (617) 866-1200 FAX (617) 661-7520

**RENOVATIONS TO 51 BRATTLE STREET**



REVISION	DATE	DESCRIPTION
Δ	28 FEB 91	INFO SERVICES CHANGES
Δ	28 MAR 91	ELEV. 13/A6.4 DELETED (CONFERENCE RM)
Δ	20 DEC 90	FIELD INSTRUCTION N°1

PEAN'S OFFICE RM #724 / TRF. CONFERENCE RM. ELEVATIONS

DRAWN BY: [Signature]  
 CHECKED: [Signature]  
 DATE: 17 AUG 90  
 JOB NO. 6912