

BENJAMIN THOMPSON & ASSOCIATES, INC.  
ARCHITECTURE, PLANNING, AND URBANISM  
ONE STORY STREET  
CAMBRIDGE, MA 02138  
(617) 876-4800 FAX (617) 661-9213, 669-9023

Cosentini Consulting Engineers  
44 Brattle Street  
Cambridge, Massachusetts 02138  
(617) 876-3830 FAX (617) 876-6647

LeMessurier Consultants  
1033 Massachusetts Avenue  
Cambridge, Massachusetts 02138  
(617) 868-1200 FAX (617) 661-7520

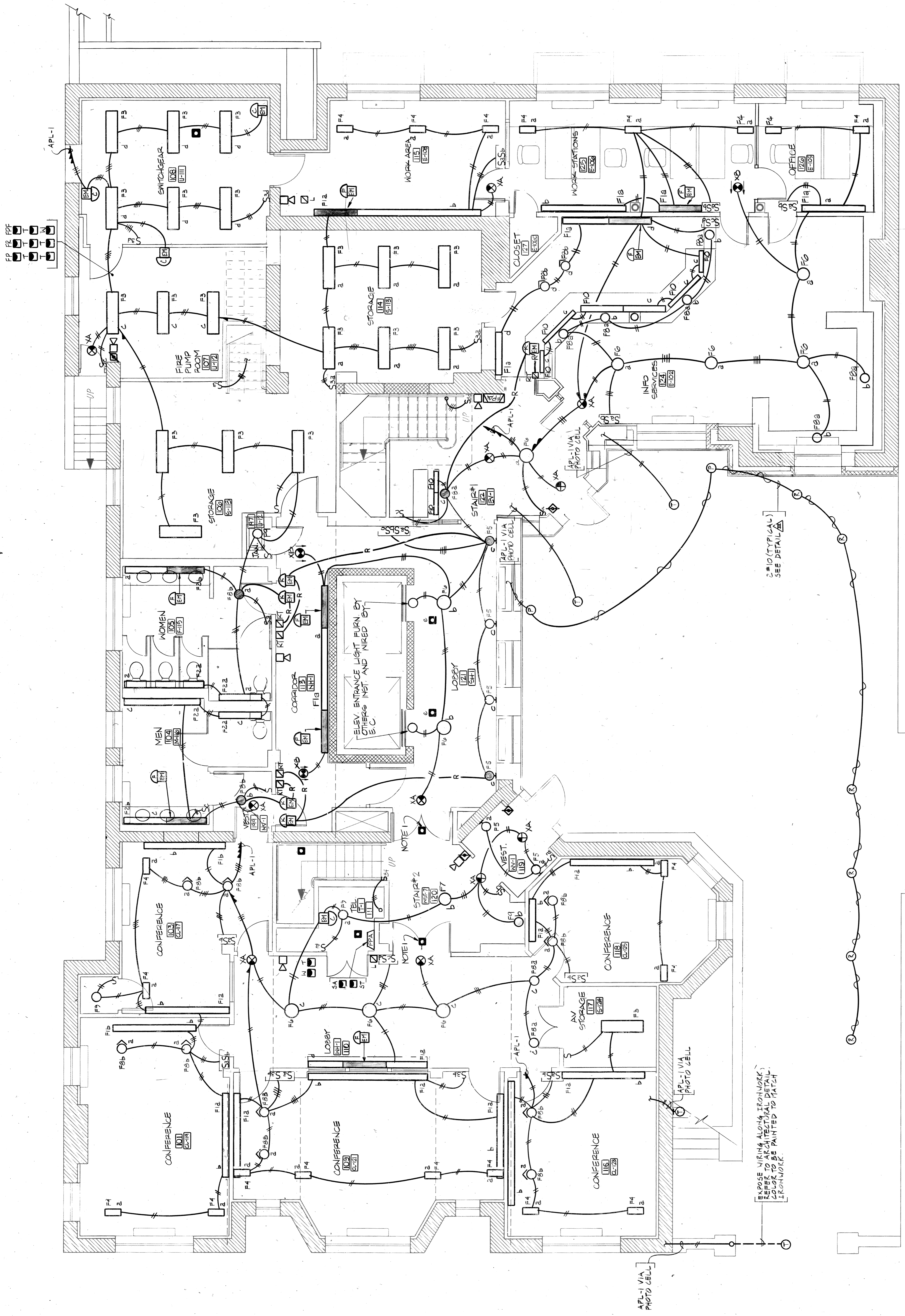
RENOVATIONS TO 51 BRATTLE STREET



RECORD SET 15 SEPT. 1992

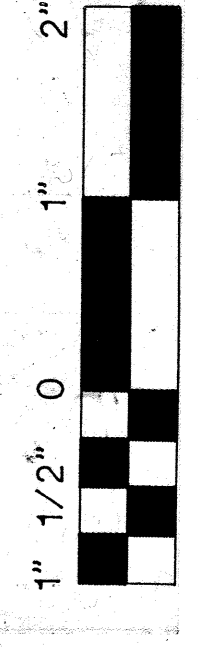
REVISION	DATE	DESCRIPTION
4-10-91		ROOM NUMBERS & NUMBERS REVISION
2-20-91		INFORMATION LOBBY REVISIONS
2-20-91		MISCELLANEOUS REVISION
2-26-92		LIGHTING REVISION
10-25-92		COORDINATION REVISION

FIRST LEVEL LIGHTING PLAN	
DRAWN	CHECKED
DATE	APPROVED
SCALE	JOB NO.
	8-15-90
	8912.00
E-2	



- NOTES:
1. LOCATE SMOKE DETECTOR BEYOND SWING OF DOOR.
  2. ALL FIXTURES AND DEVICES SHALL BE LOCATED AS PER ARCHITECTURAL REFLECTED CEILING PLAN.

FIRST LEVEL



EXPOSE WIRING ALONG IRONWORKS REFER TO ARCHITECTURAL DETAIL. WORK TO BE PAINTED TO MATCH IRONWORK.

2" (TYPICAL) SEE DETAIL