

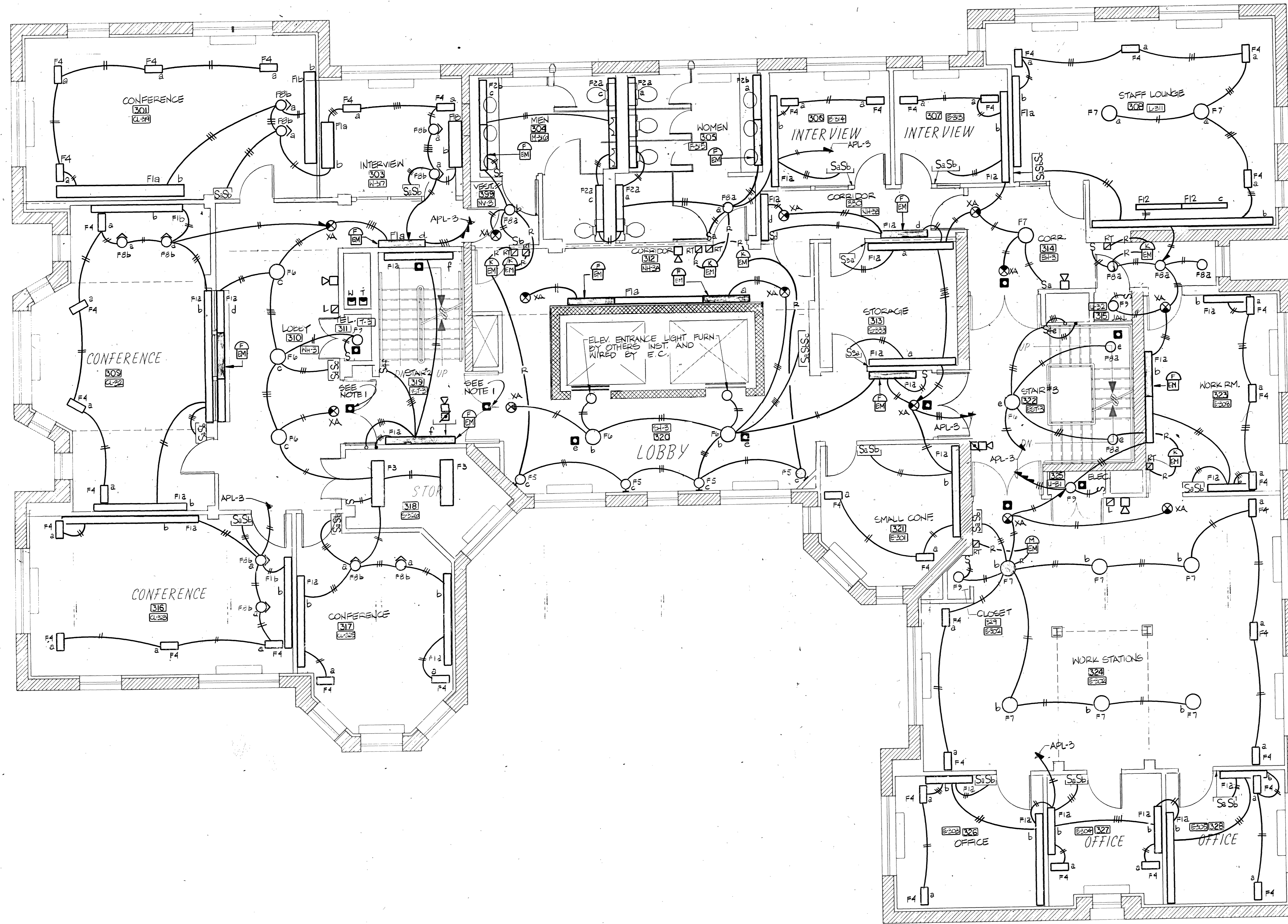
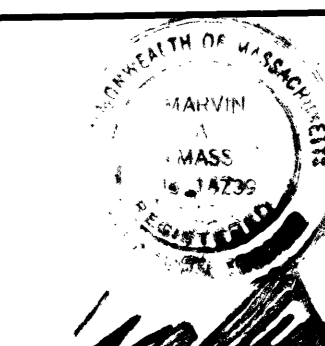
THE DIVISION  
OF  
CONTINUING EDUCATION

BENJAMIN THOMPSON & ASSOCIATES, INC.  
ARCHITECTURE, PLANNING, AND URBANISM  
ONE STORY STREET  
CAMBRIDGE, MA 02138  
(617) 876-4800 FAX (617) 661-9213, 868-9023

Cosentini Consulting Engineers  
44 Brattle Street  
Cambridge, Massachusetts 02138  
(617) 876-3830 FAX (617) 876-6647

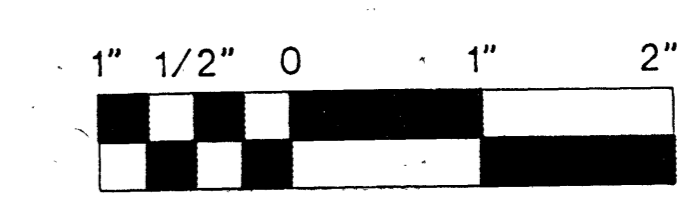
LeMessurier Consultants  
1033 Massachusetts Avenue  
Cambridge, Massachusetts 02138  
(617) 868-1200 FAX (617) 661-7520

RENOVATIONS  
TO  
51 BRATTLE STREET



THIRD LEVEL

- NOTES:
1. LOCATE SMOKE DETECTOR BEYOND SWING OF DOOR.
  2. ALL FIXTURES AND DEVICES SHALL BE LOCATED AS PER ARCHITECTURAL REFLECTED CEILING PLAN.



RECORD SET 15 SEPT. 1992

REVISION	DATE	DESCRIPTION
△	4-10-91	ROOM NAMES & NUMBERS REVISION
△	3-21-91	MISCELLANEOUS REVISION
△	2-6-91	DELETE CLASSROOM OF THE FUTURE
△	2-20-91	MISCELLANEOUS REVISION
△	12-6-90	LIGHTING REVISION

THIRD LEVEL LIGHTING PLAN		
DRAWN	CHECKED	APPROVED
R.T.	M.T.	
SCALE	DATE	JOB NO.
1/4" = 1'-0"	8/15/90	8912.00

E-6