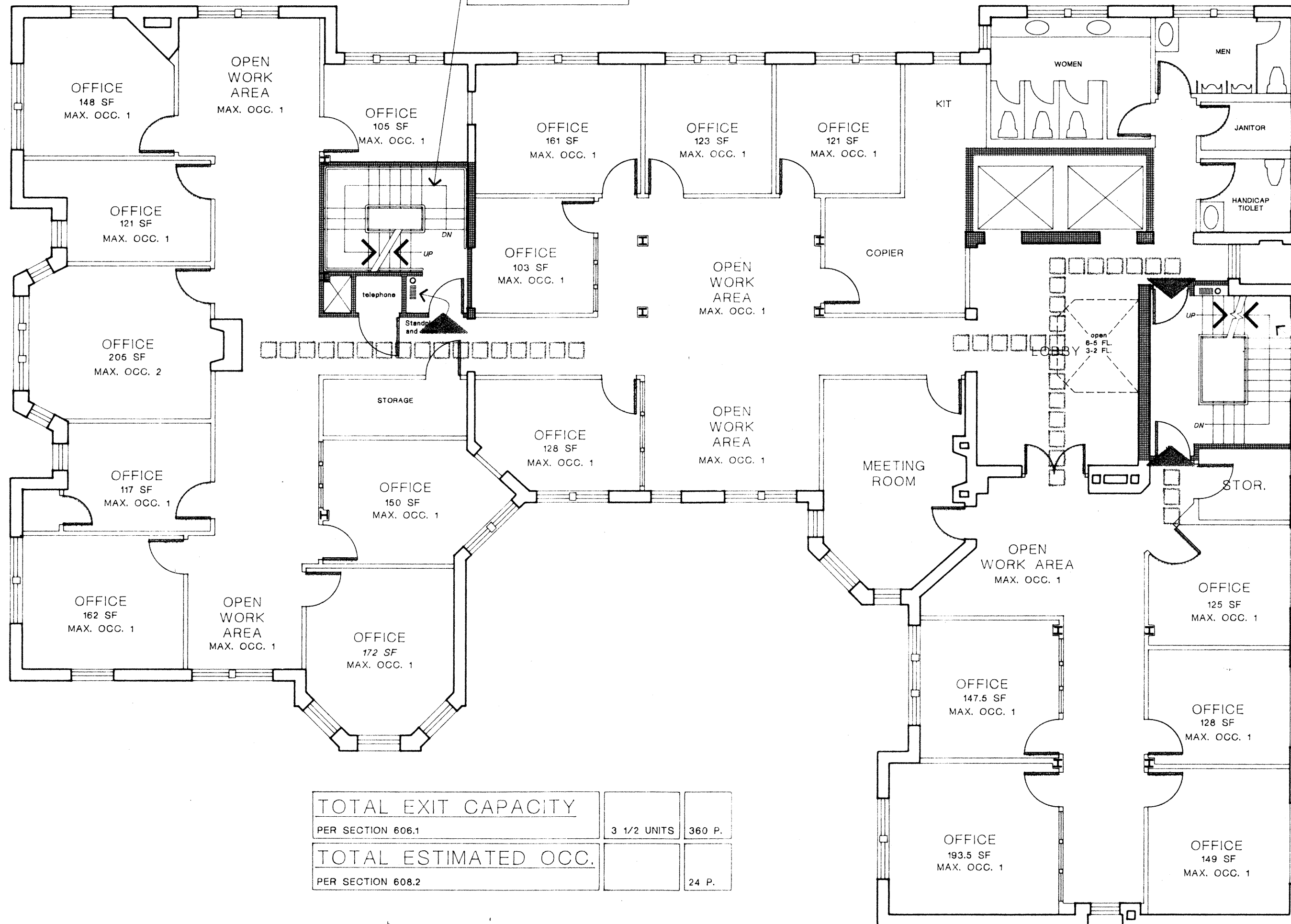


Stair No. 2
 Door 36" 1 1/2 units
 Stair 44" 2 units
 Max. Capacity 180 p.



STAIR NO. 1
 Door 2 @ 36" 3 UNITS
 Stair 44" 2 units
 Max. Capacity 180 p.

TOTAL EXIT CAPACITY		
PER SECTION 606.1	3 1/2 UNITS	360 P.
TOTAL ESTIMATED OCC.		
PER SECTION 608.2		24 P.

 EXIT ACCESSWAY
 2 HR. RATED ENCLOSURE



TYPICAL UPPER FLOOR



RENOVATIONS TO 51 BRATTLE STREET



OCCUPANCY AND EGRESS

DRAWN	CHECKED	APPROVED
SCALE 1/8"=1'-0"	DATE 6 DEC 88	JOB NO. 3111

SK 60

220 1107v