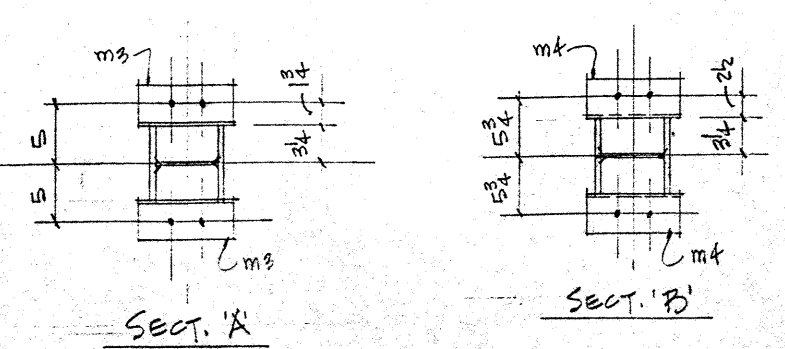
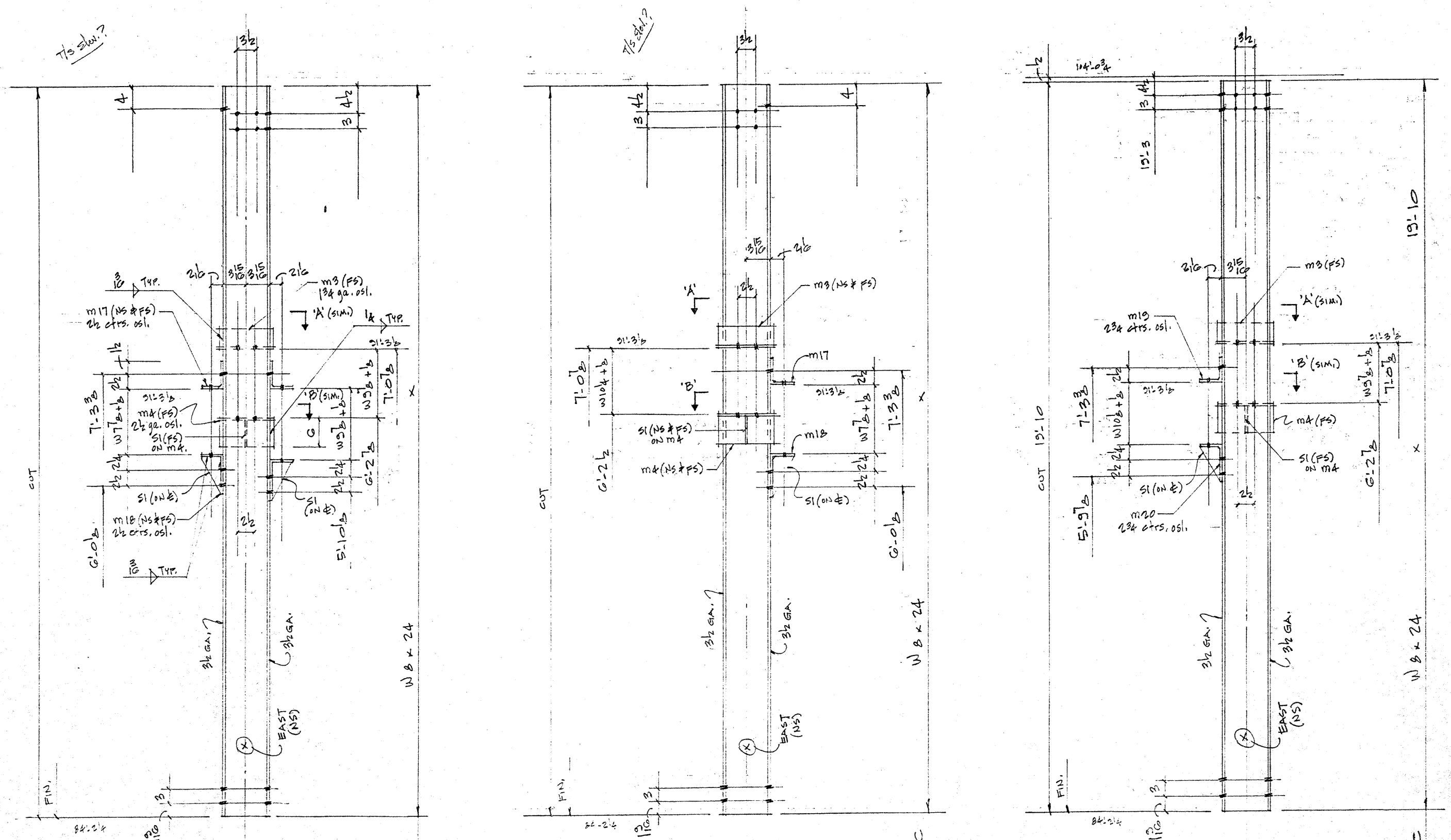


WALSH BROTHERS INC.
 REVIEWED FOR CONTRACT
 REQUIREMENTS

SPEC. SECTION 5100
 FILE # 8.12
 SUB. # 2
 SUBCONTRACTOR None
 DATE 10/2/90
 BY R.C.

BILL OF MATERIAL

NO. OF PCS	SHIP MARK	PIECE MARK	DESCRIPTION	LENGTH	REMARKS	WEIGHT
1	None		W 8 x 24		PS (G-R)	
1		m3	L 3 x 3 x 3/8	3		
1		m4	L 6 x 4 x 3/8	3		
2		m17	L 4 x 3 1/2 x 3/8	6		
2		m18	L 6 x 4 x 3/8	6		
3		s1	1/2 3/8 x 3/8	15 3/8	FITTED	
1	AT-C		W 8 x 24		PS (G-R)	
2		m3				
2		m4				
1		m17				
1		m18				
2		s1				
1	BI-C		W 8 x 24	19 10	PS (G-R)	
1		m3				
1		m4				
1		m17	L 4 x 3 1/2 x 3/8	6		
1		m18	L 6 x 4 x 3/8	6		
2		s1				



SHOP NOTES - SEE SHEET 1

FINAL APPROVAL
 DATE SEP 21 1990
 FOR FABRICATION
 SEP 17 1990

REVISIONS		PRINT RECORD	
NO.	DATE	DESCRIPTION	DATE

NOVEL IRON WORKS
 OCEAN ROAD
 GREENLAND, N.H. 03840

PAINT None HOLES U.N. 1/8" WELD U.N. E70XX ALSO CERTIFIED CATEGORY #

PROJECT HARVARD UNIV. RENOV. 51 BRATTLE ST. CAMBRIDGE MASS. DATE 7-90

DESCRIPTION COLS. CHECKED BY DRAWN BY ROD

ARCH. ENG. JOB NO. 190

CUSTOMER WALSH BROS. SHEET NO. 12

200-104