



THE DIVISION
OF
CONTINUING EDUCATION

BENJAMIN THOMPSON & ASSOCIATES, INC.
ARCHITECTURE, PLANNING, AND URBANISM
ONE STORY STREET
CAMBRIDGE, MA 02138
(617) 876-4800 FAX (617) 661-9213, 868-9023

Cosentini Consulting Engineers
44 Brattle Street
Cambridge, Massachusetts 02138
(617) 876-3830 FAX (617) 876-6647

LeMessurier Consultants
1033 Massachusetts Avenue
Cambridge, Massachusetts 02138
(617) 868-1200 FAX (617) 661-7520

RENOVATIONS
TO
51 BRATTLE STREET

KEY:

- 2 HR. WALL
- ▨ NEW MASONRY INFILL

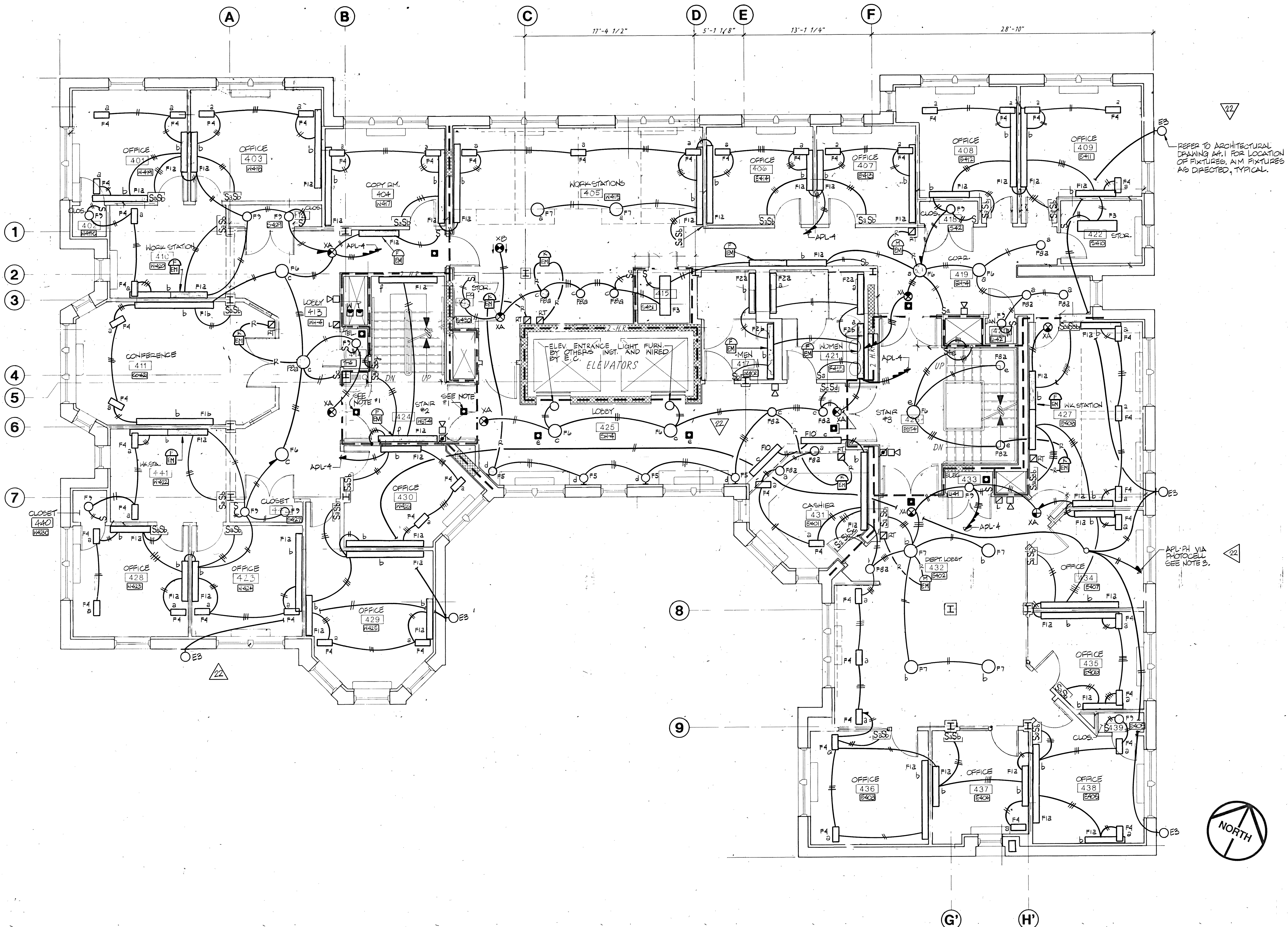
RECORD SET 15 SEPT. 1992

REVISION	DATE	DESCRIPTION
3-26-91		EXTERIOR LIGHTING
4-10-91		ROOM NAMES & NUMBERS REVISION
3-26-91		DELETED FIXTURES, ROOM 436
3-21-91		MISCELLANEOUS REVISION
2-20-91		MISCELLANEOUS REVISION
12-6-90		LIGHTING REVISION

FOURTH LEVEL
LIGHTING PLAN

DRAWN	CHECKED	APPROVED
MWR		
SCALE 1/4" = 1'-0"	DATE 17 AUG 90	JOB NO. 8912.00

E-8



FOURTH LEVEL

NOTES:

1. LOCATE SMOKE DETECTOR BEYOND SWING OF DOOR.
2. ALL FIXTURES AND DEVICES SHALL BE LOCATED AS PER ARCHITECTURAL REFLECTED CEILING PLAN.
3. PROVIDE PHOTOCELL ON ROOF (TORK #2101) WITH SINGLE POLE MANUAL OVERRIDE SWITCH LOCATED ADJACENT TO PANEL APL-PH. BRANCH CIRCUITRY SHALL BE #10 AWG.

