



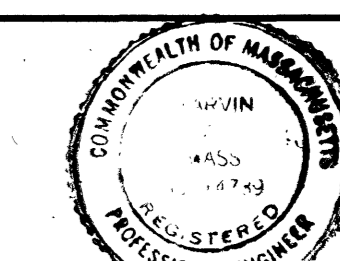
THE DIVISION
OF
CONTINUING EDUCATION

BENJAMIN THOMPSON & ASSOCIATES, INC.
ARCHITECTURE, PLANNING, AND URBANISM
ONE STORY STREET
CAMBRIDGE, MA 02138
(617) 876-4300 FAX (617) 661-9213, 868-9023

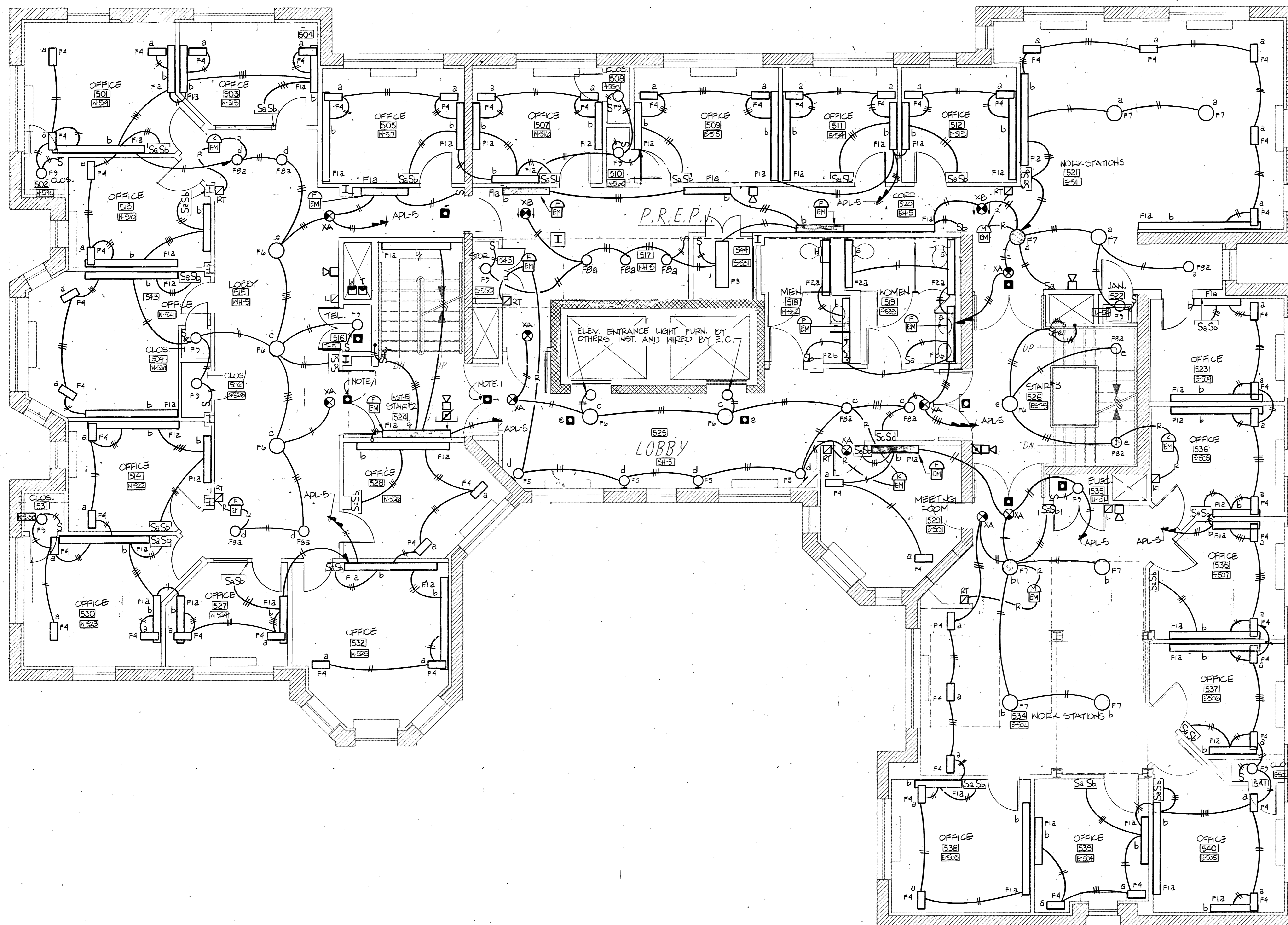
Cosentini Consulting Engineers
44 Brattle Street
Cambridge, Massachusetts 02138
(617) 876-3830 FAX (617) 876-6647

LeMessurier Consultants
1033 Massachusetts Avenue
Cambridge, Massachusetts 02138
(617) 868-1200 FAX (617) 661-7520

RENOVATIONS
TO
51 BRATTLE STREET

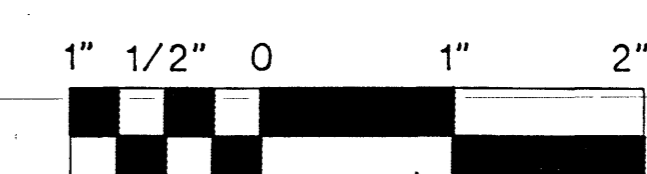


William J. Walker



FIFTH LEVEL

- NOTES:
1. LOCATE SMOKE DETECTOR BEYOND SWING OF DOOR.
 2. ALL FIXTURES AND DEVICES SHALL BE LOCATED AS PER ARCHITECTURAL REFLECTED CEILING PLAN.



RECORD SET 15 SEPT. 1992

REVISION	DATE	DESCRIPTION
4-10-91		ROOM NAMES & NUMBERS REVISION
3-21-91		MISCELLANEOUS REVISION
2-20-91		MISCELLANEOUS REVISION
12-6-90		LIGHTING REVISION

FIFTH LEVEL LIGHTING PLAN		
DRAWN	CHECKED	APPROVED
R.T.	M.T.	
SCALE	DATE	JOB NO.
1/4"=1'-0"	8/15/90	8912.00

E-10