



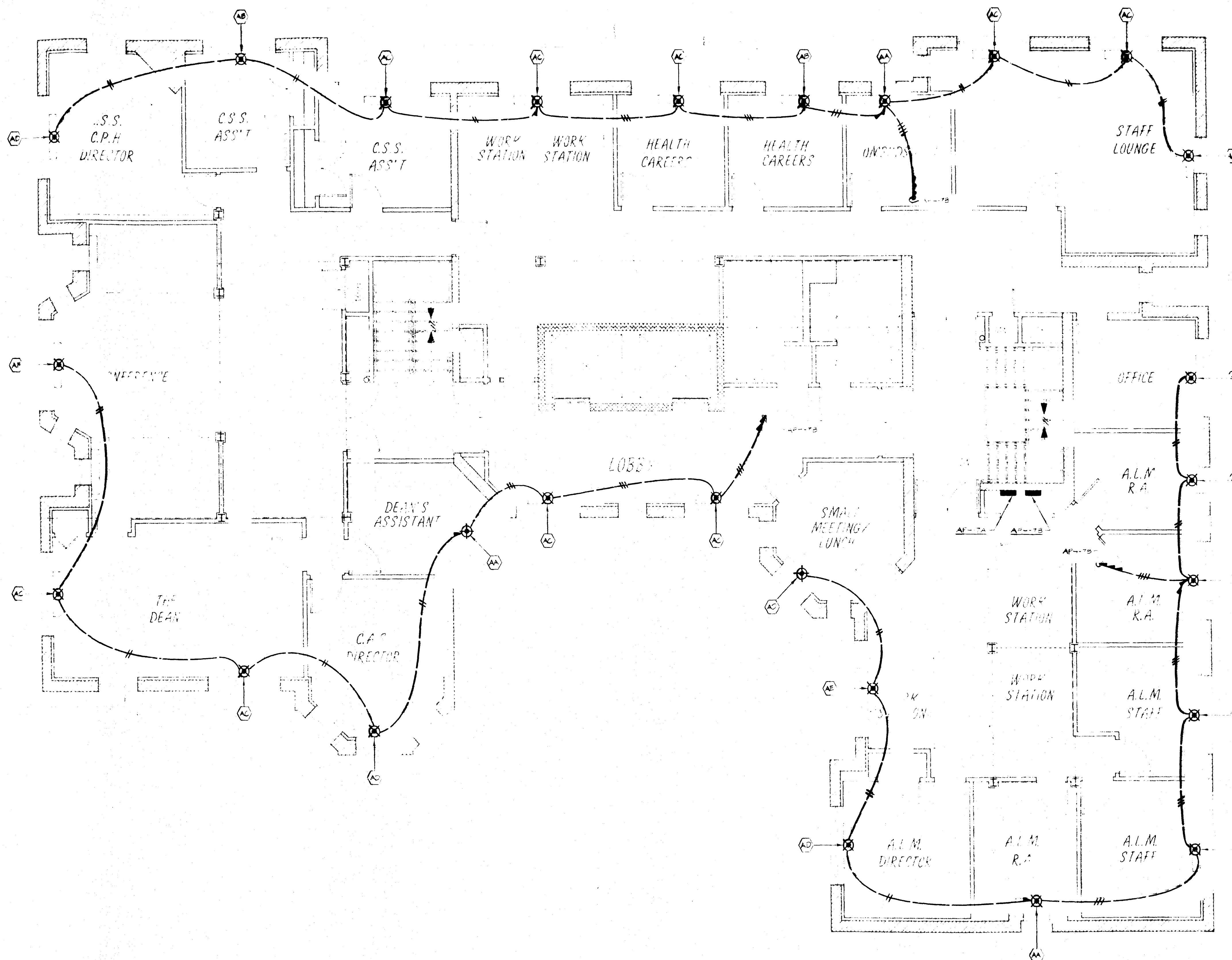
THE DIVISION
OF
CONTINUING EDUCATION

BENJAMIN THOMPSON & ASSOCIATES, INC.
ARCHITECTURE, PLANNING, AND URBANISM
ONE STORY STREET
CAMBRIDGE, MA 02138
(617) 876-4300 FAX (617) 661-9213, 868-9023

Antini Consulting Engineers
44 Brattle Street
Cambridge, Massachusetts 02138
(617) 376-3830 FAX (617) 876-6647

Messurier Consultants
120 Massachusetts Avenue
Cambridge, Massachusetts 02138
(617) 868-1200 FAX (617) 661-7520

RENOVATIONS
TO
51 BRATTLE STREET



SEVENTH LEVEL

DESIGN DEVELOPMENT 3-21-90

REVISION	DATE	DESCRIPTION
SEVENTH LEVEL POWER PLAN		
DRAWN	CHECKED	APPROVED
R.I.	M.L.	
SCALE	DATE	JOB NO.
1/4" = 1'-0"		8912.00

E-15

220-56