

KENNEDY SCHOOL OF GOVERNMENT
 HARVARD UNIVERSITY
 CSIA RENOVATION
 PHASE I

SCALE: 1/8" = 1'-0"
 JOB NO: 9823
 DRAWN: TO/C
 DATE: 7/17/98
 FILE NAME: X:\SEP88
 (PHASE-1)\A-1.DWG
 REVISIONS:

08-02-98

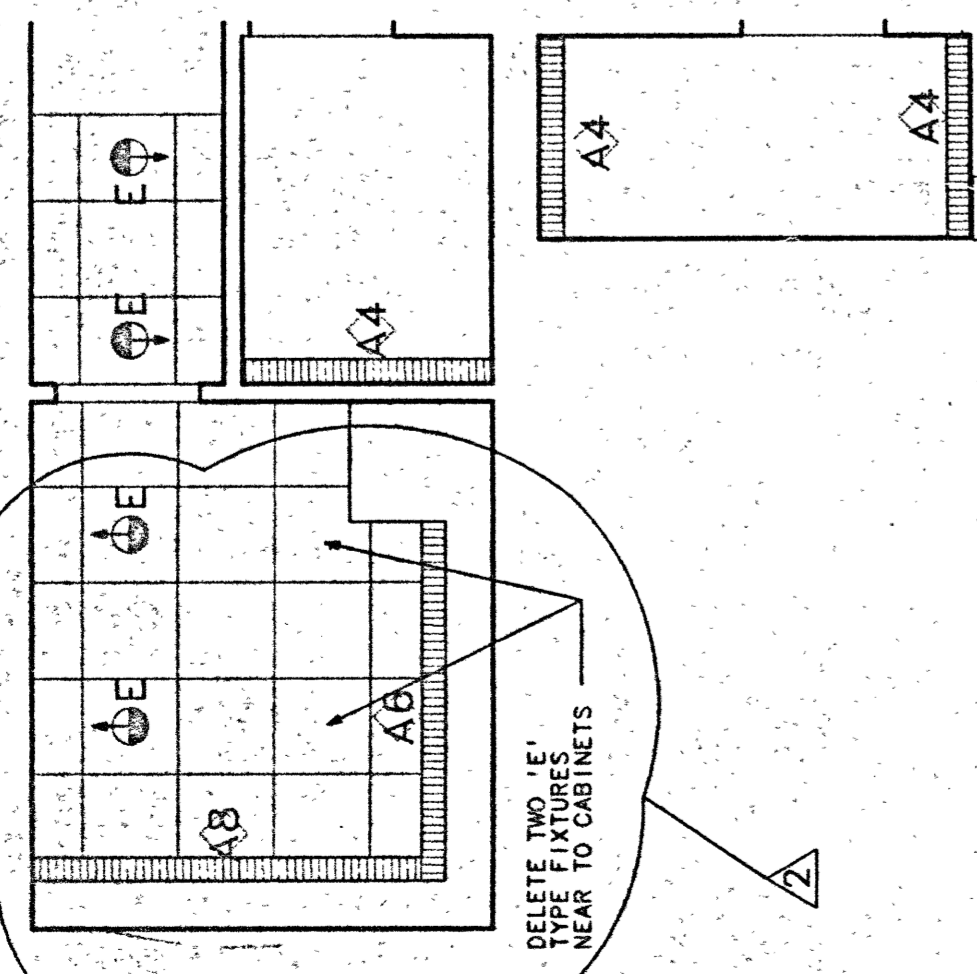
KENNEDY SCHOOL OF GOVERNMENT
 PARTIAL THIRD FLOOR RCP &
 PARTIAL FOURTH FLOOR RCP

ARCHITECTURAL RESOURCES CAMBRIDGE, INC
 140 MOUNT AUBURN ST
 CAMBRIDGE MA 02139
 TEL: (617) 552-2333
 FAX: (617) 552-2322

A3

16-0805

NOTE:
 ENCLOSED 1/4" = 1'-0"
 FLOOR PLANS, REFLECTED
 CEILING PLANS (A3.1)
 & A2.2 CONSTITUTE
 PHASE I WORK



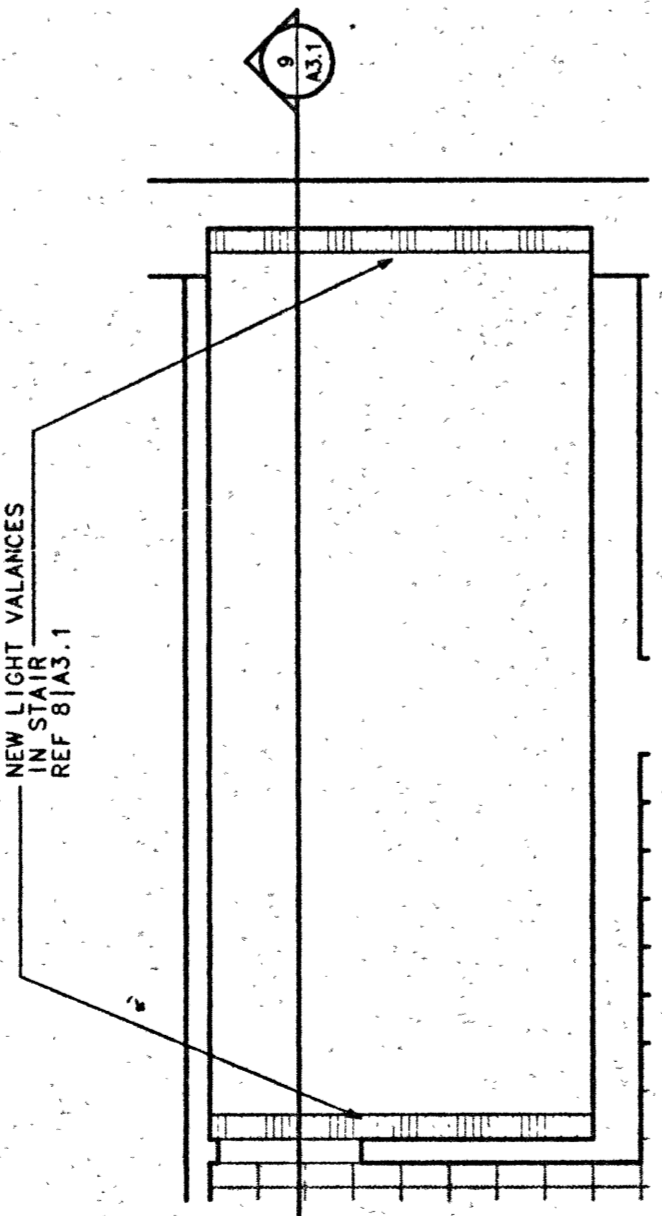
REMOVE EXISTING
 DOWN LIGHTS
 IN CORRIDOR
 NEW DOWN LIGHTS TO
 BE INSTALLED IN CORRIDOR
 AS SHOWN

EXISTING CEILING
 LIGHT TO REMAIN
 EXISTING DOOR
 TO REMAIN OPEN
 EXISTING DOWN LIGHTS
 IN CEILING GRID
 TO REMAIN
 CUT WORK SHALL BE
 DONE TO ACCOMMODATE NEW
 REPAIR/REPLACE
 SLATS AS REQ'D.

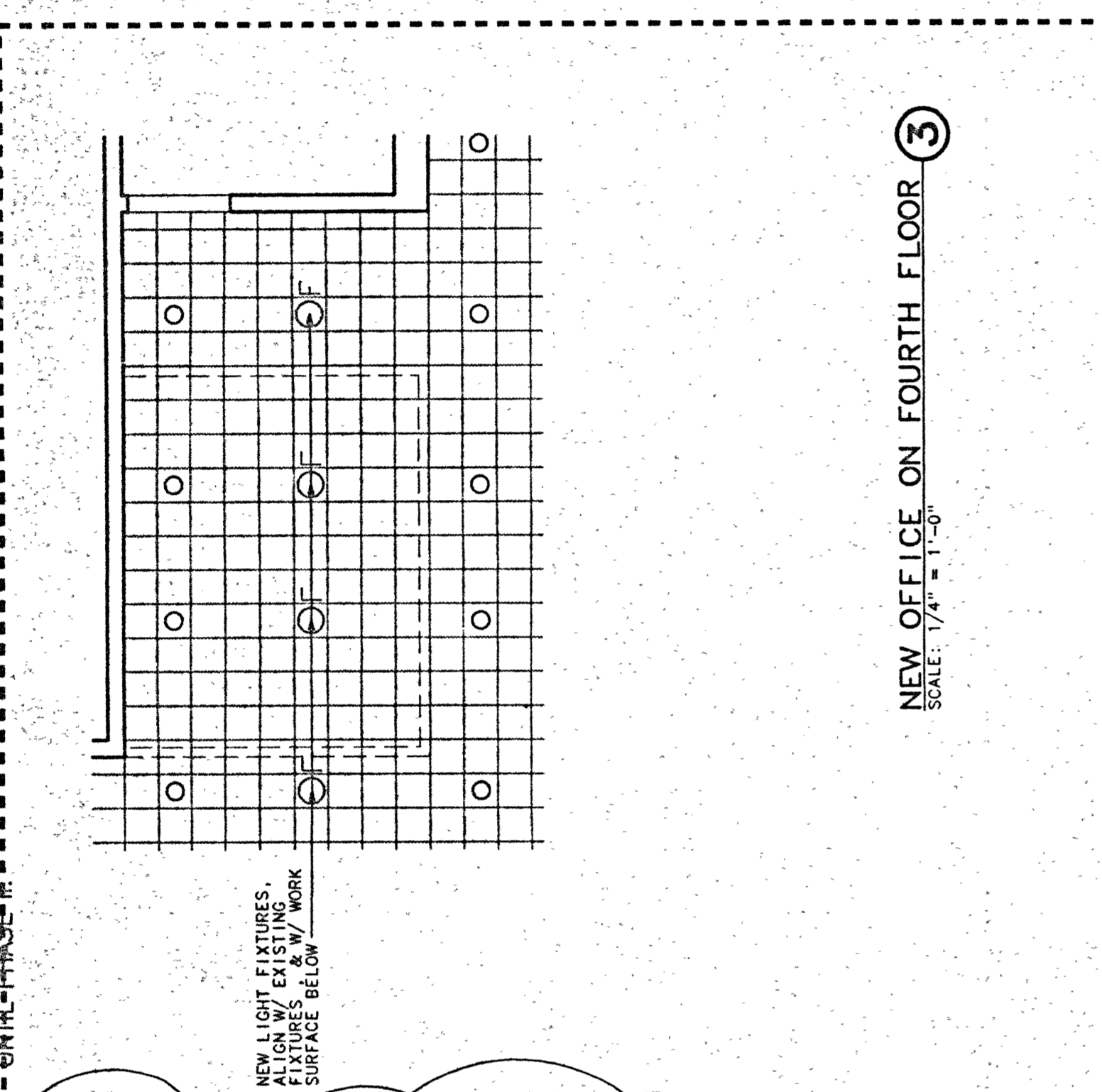
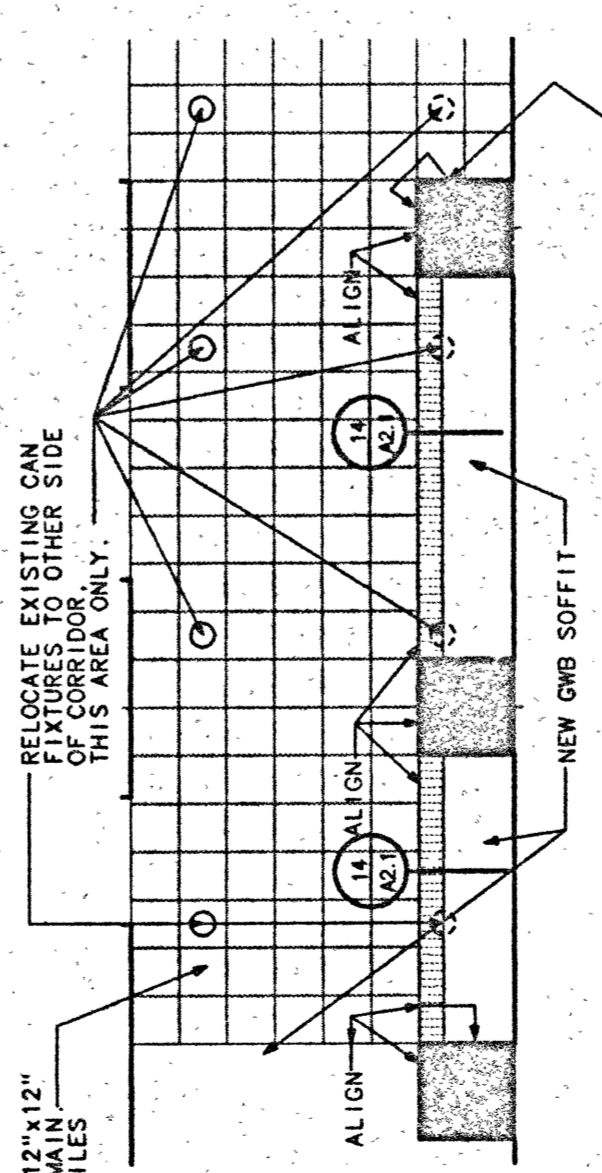
ENTRANCE TO CORRIDOR
 SCALE: 1/4" = 1'-0"

RELOCATE EXISTING
 PARTITION
 ALIGN W/ NEW LOW

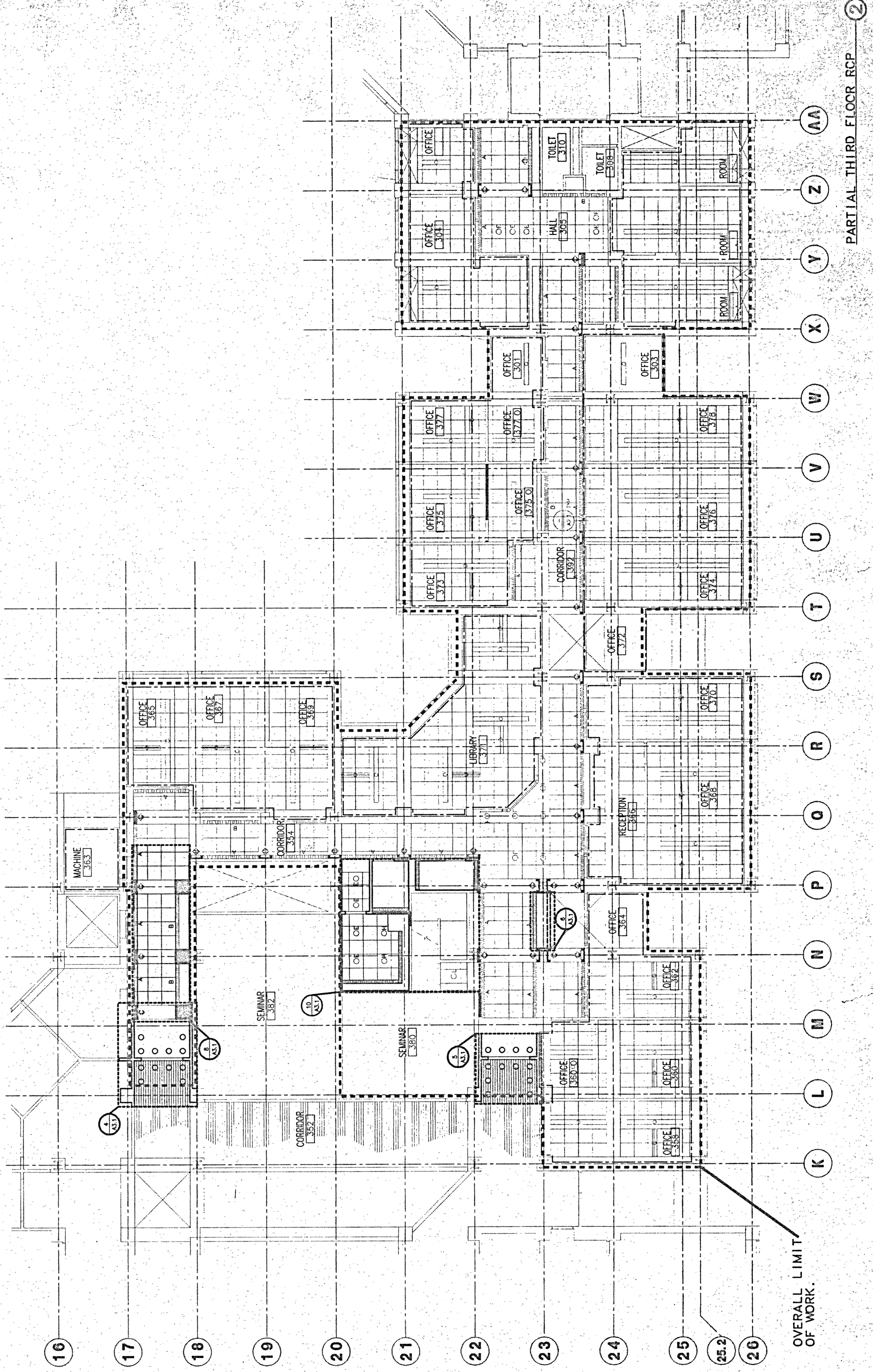
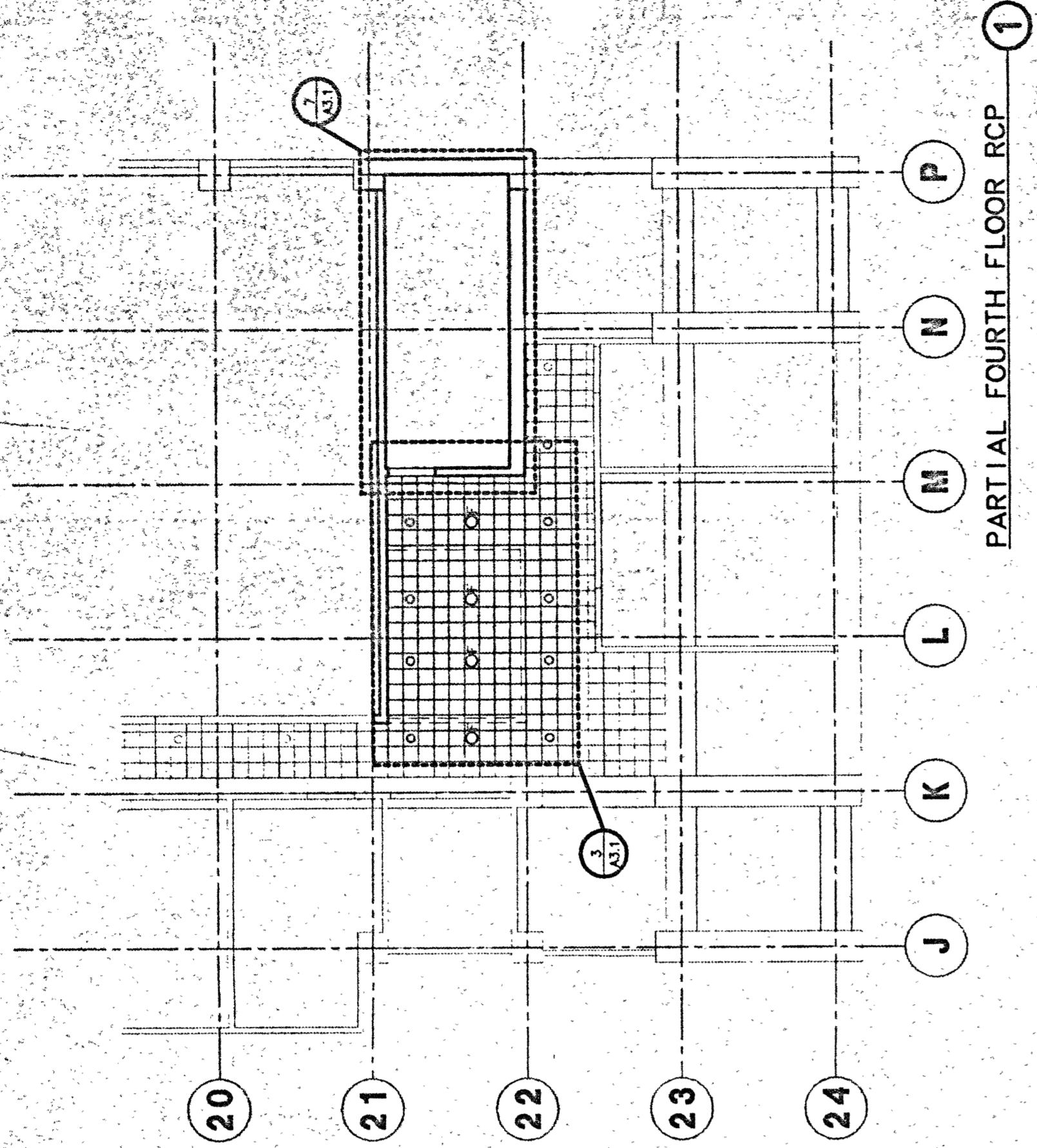
LIGHT LOBBY
 SCALE: 1/4" = 1'-0"



PARTIAL CORR LOR RCP
 SCALE: 1/4" = 1'-0"



PARTIAL FOURTH FLOOR RCP
 SCALE: 1/4" = 1'-0"



PARTIAL THIRD FLOOR RCP
 SCALE: 1/4" = 1'-0"