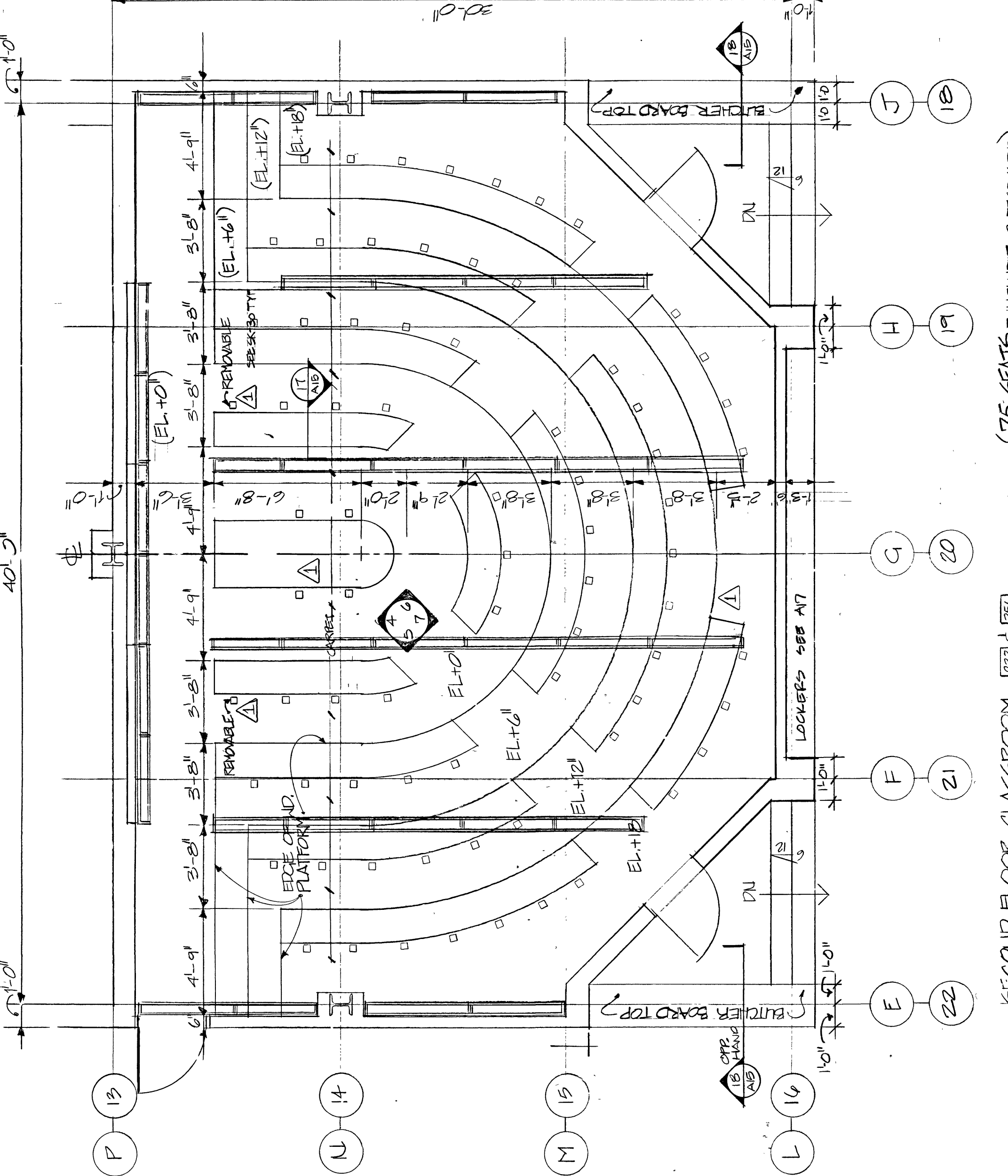
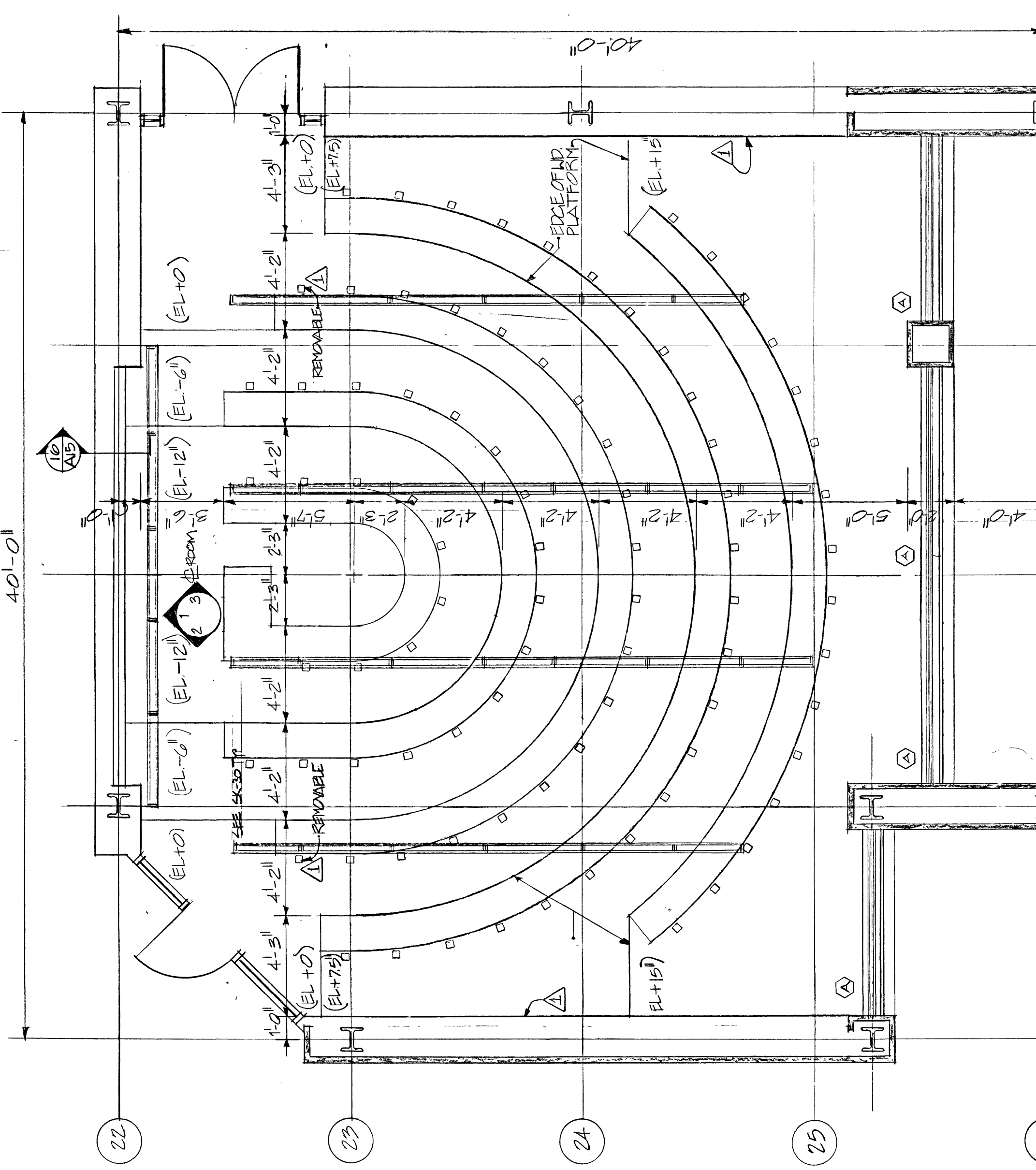


FIRST FLOOR CLASSROOM 171
(65 SEATS - INCLUDES 2 REMOVABLE)

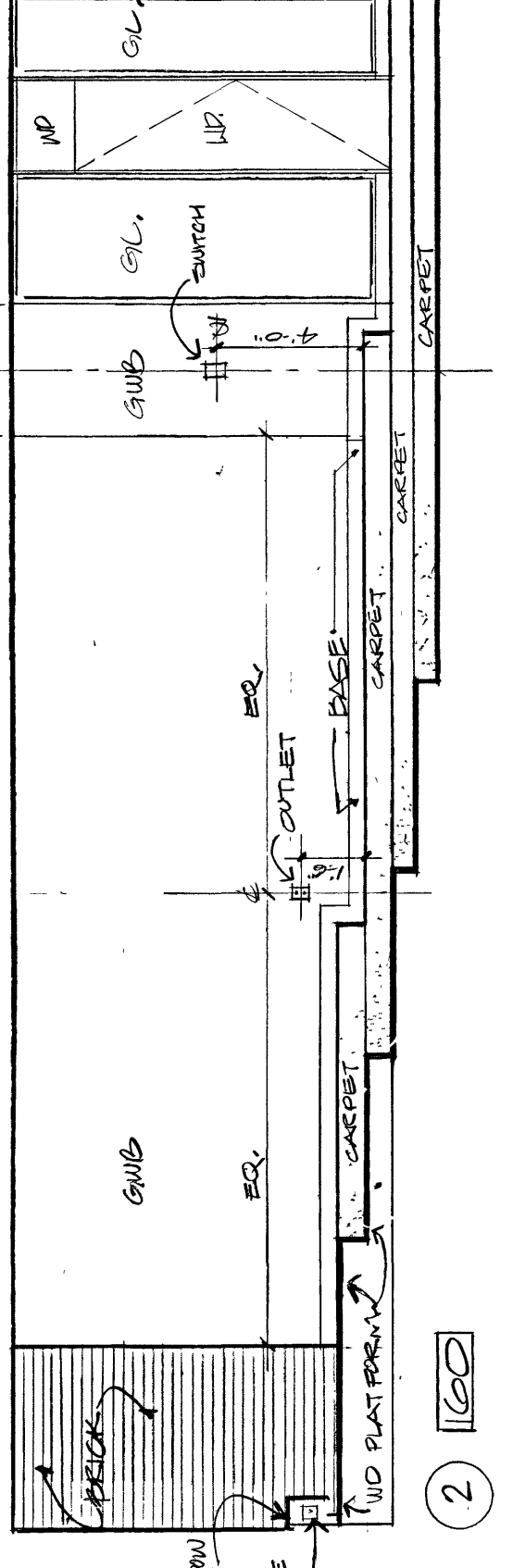


SECOND FLOOR CLASSROOM 172 (75 SEATS - INCLUDES 2 REMOVABLE)

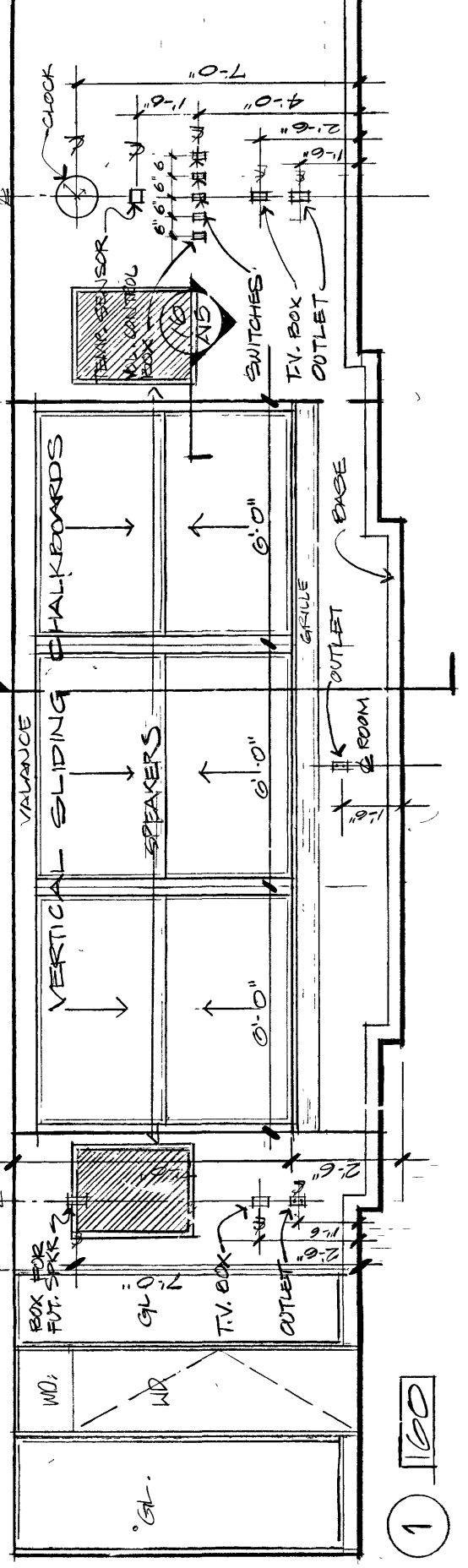


FIRST FLOOR CLASSROOM 170
(84 SEATS - INCLUDES 2 REMOVABLE)

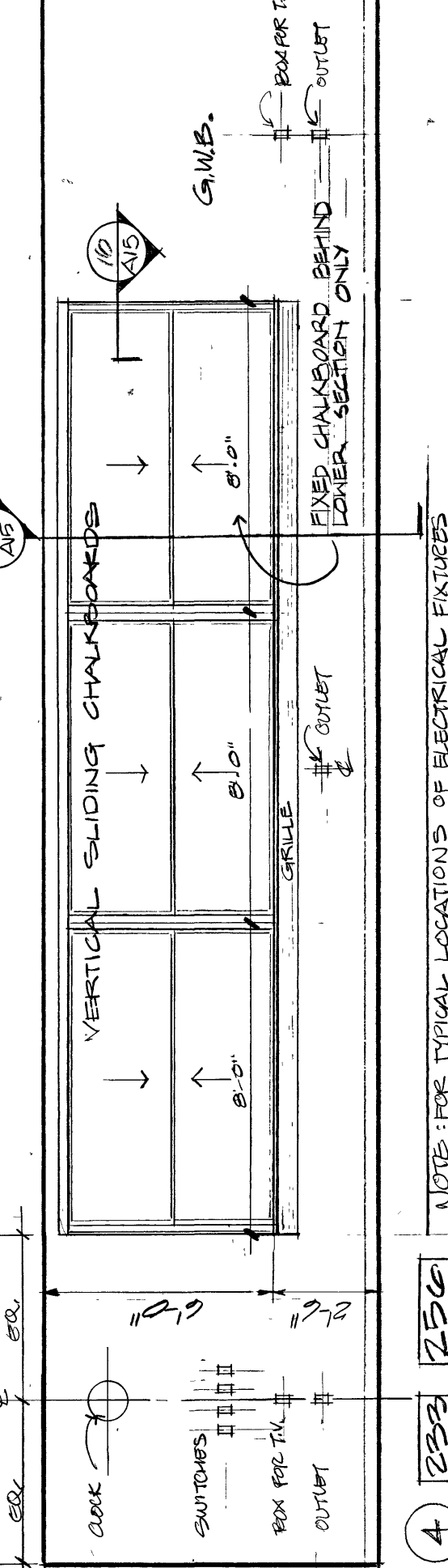
NOTE: ALL CLASSROOMS:
UNDERLAYMENT OVER ALL SEATING AREAS TO BE
DESIGNED FOR 60 PSF LIVE LOAD.
THE LITING SHALL BE COMPLETELY
FLUORESCENT WITH NON-COMBUSTIBLE
INSULATING FILL.



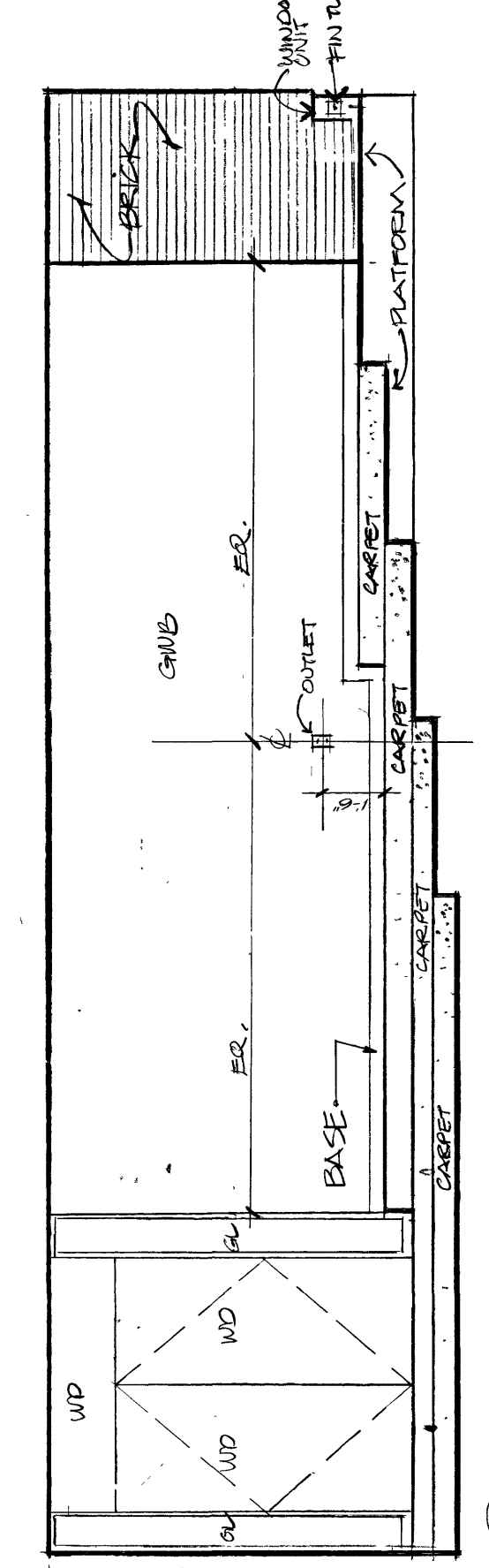
1220



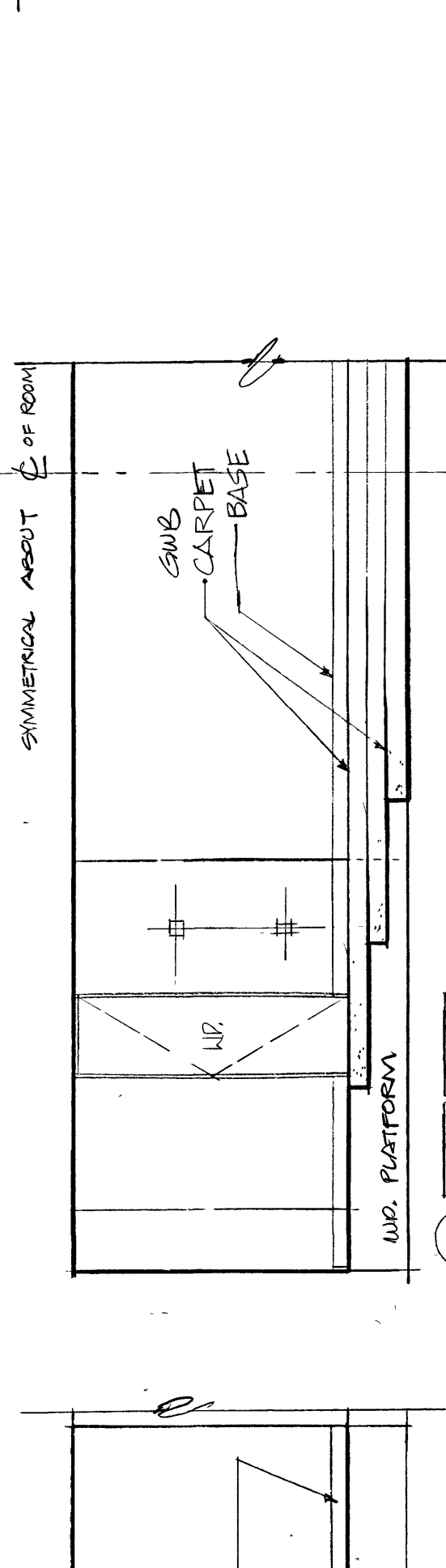
1221



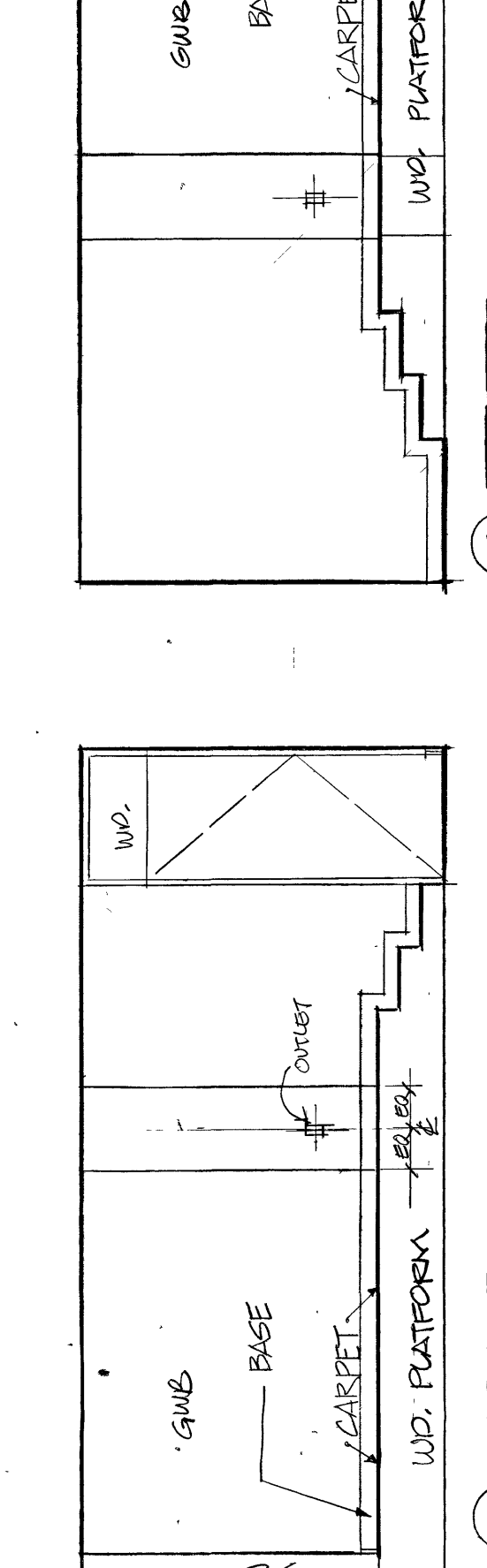
1222



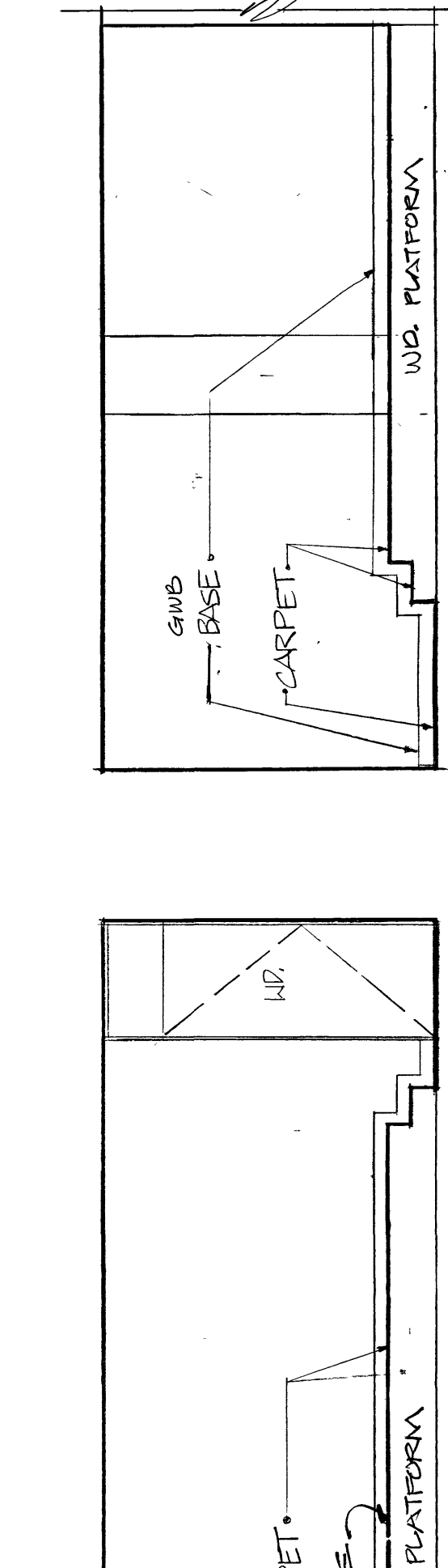
1223



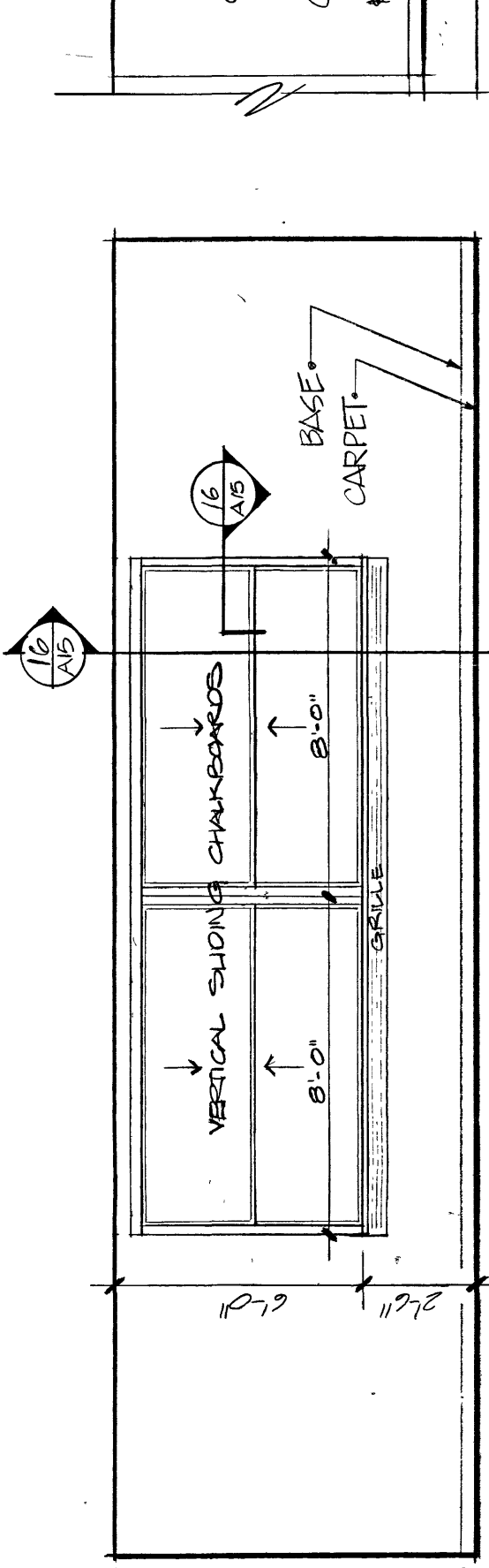
1224



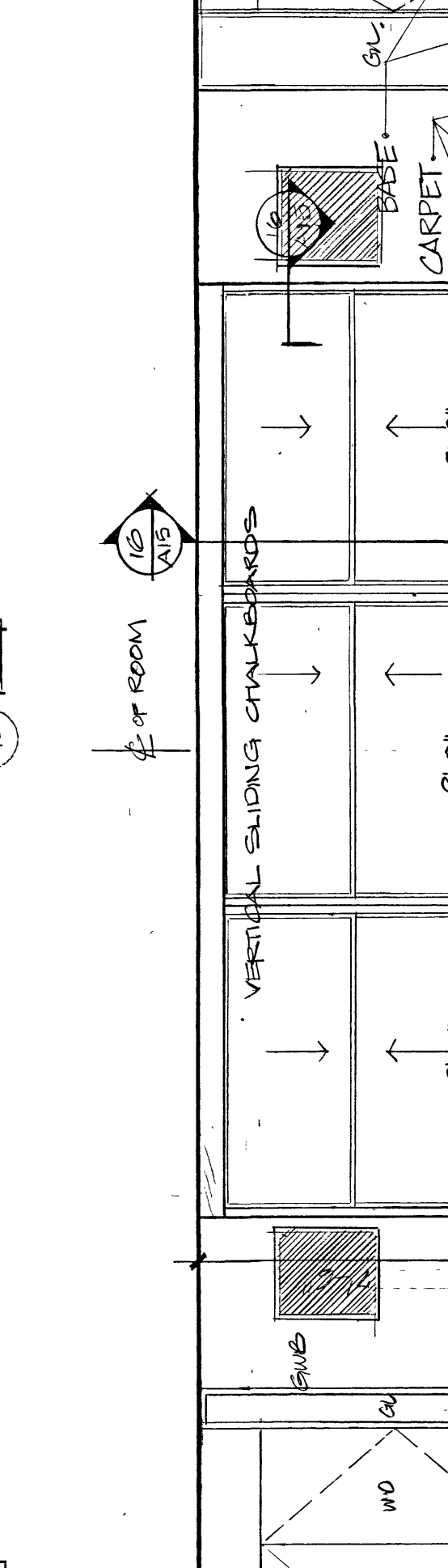
1225



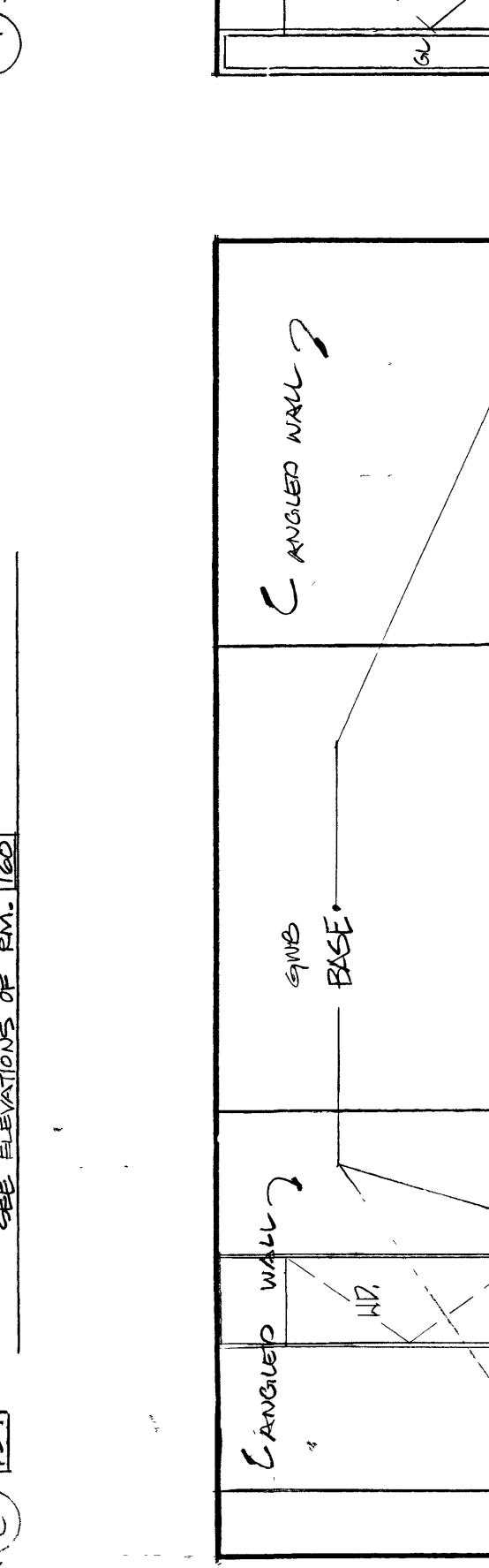
1226



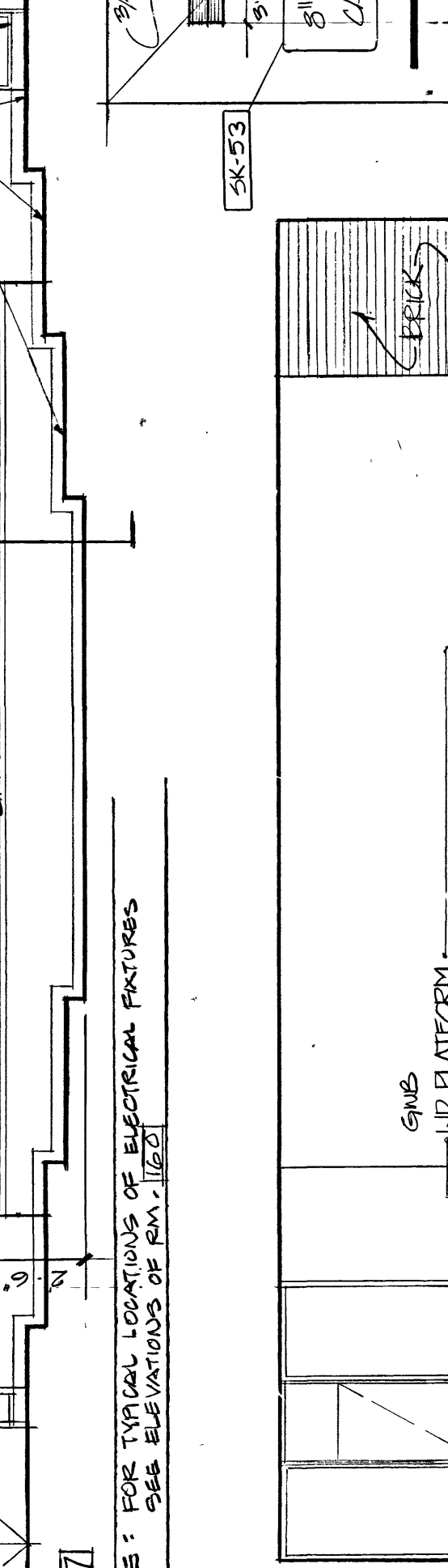
1227



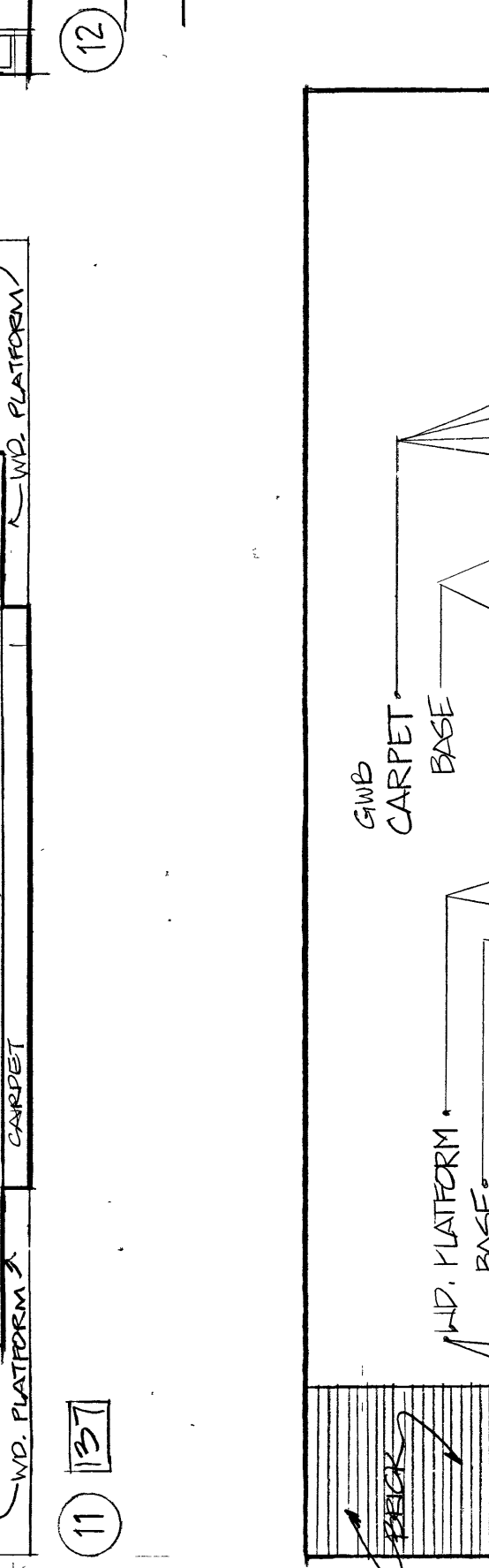
1228



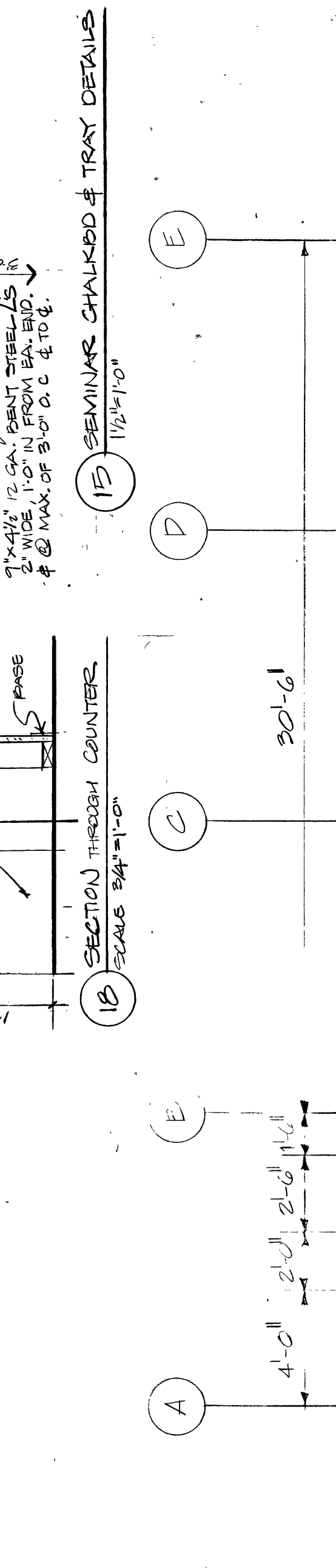
1229



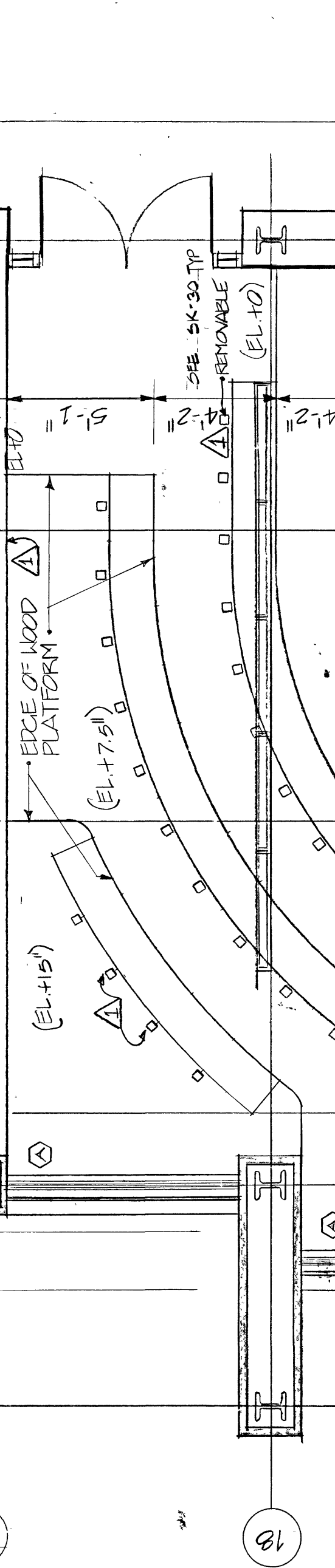
1230



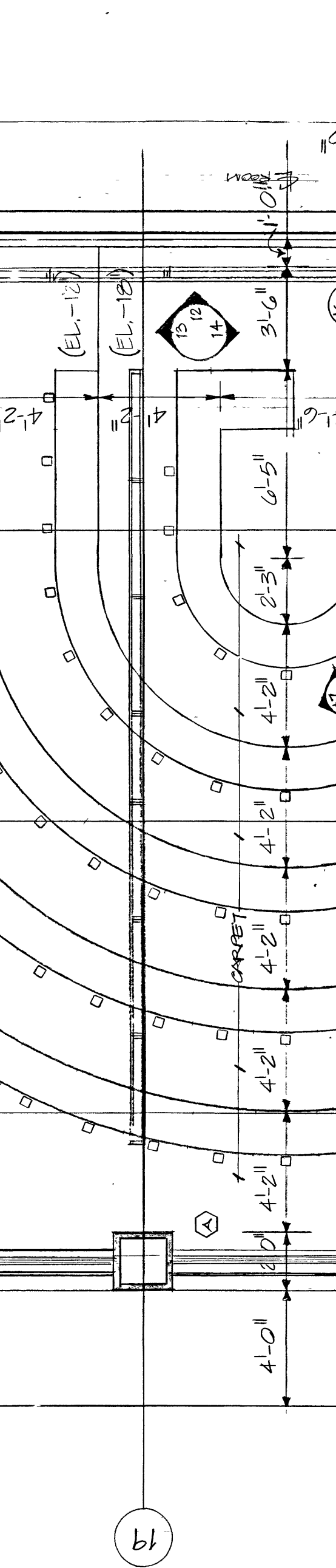
1231



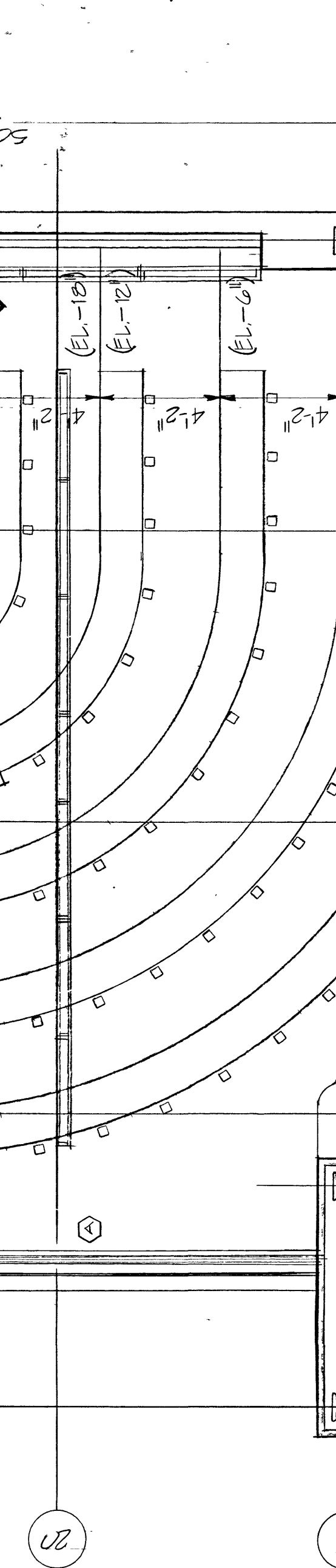
1232



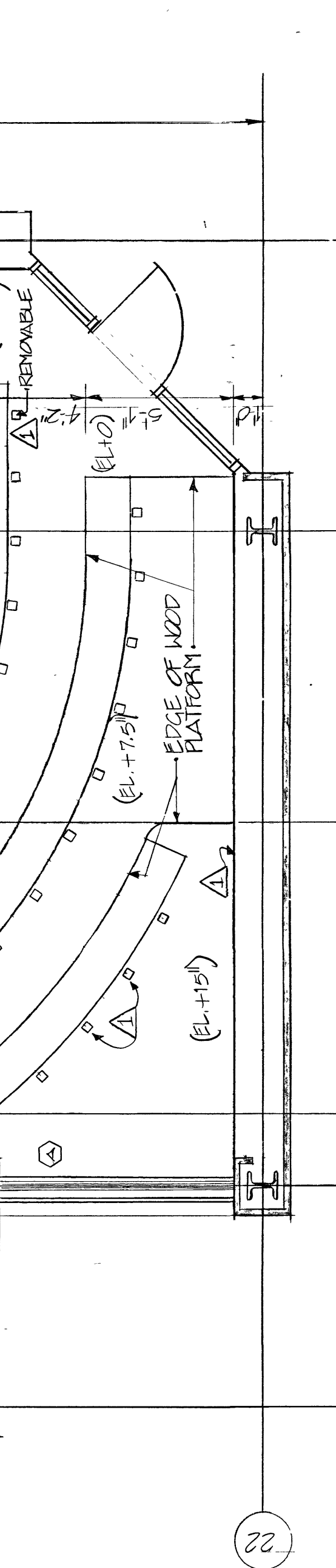
1233



1234

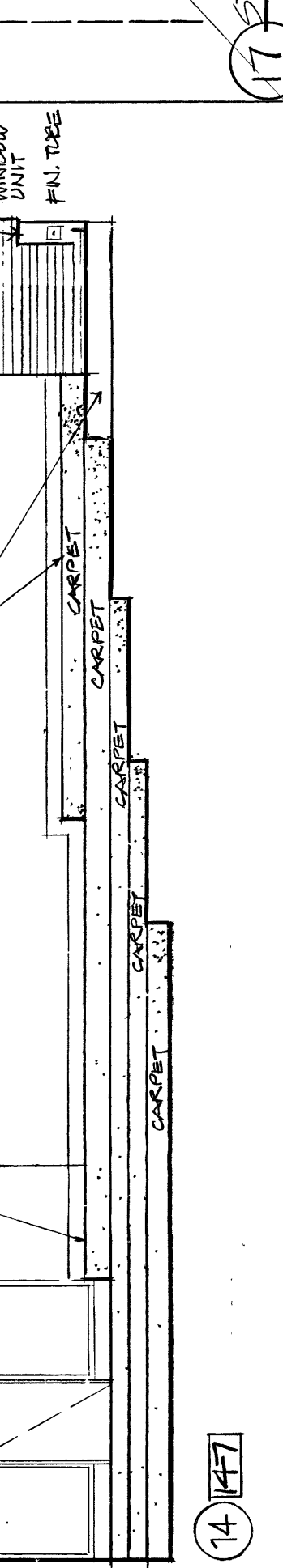


1235

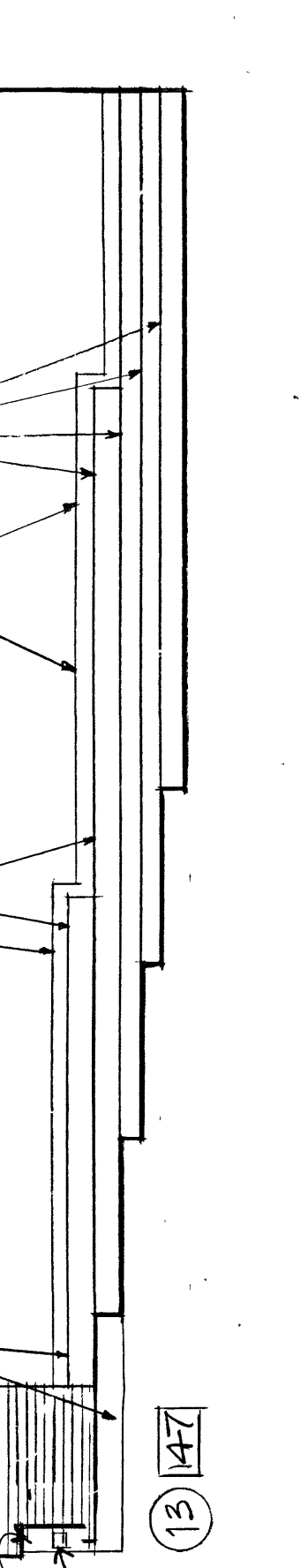


1236

FIRST FLOOR CLASSROOM 177
(110 SEATS - INCLUDES 2 REMOVABLE)



1237



1238



1239