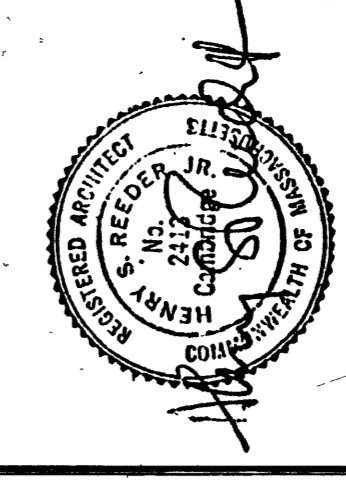


BELFER CENTER
KENNEDY SCHOOL of GOVERNMENT
HARVARD UNIVERSITY

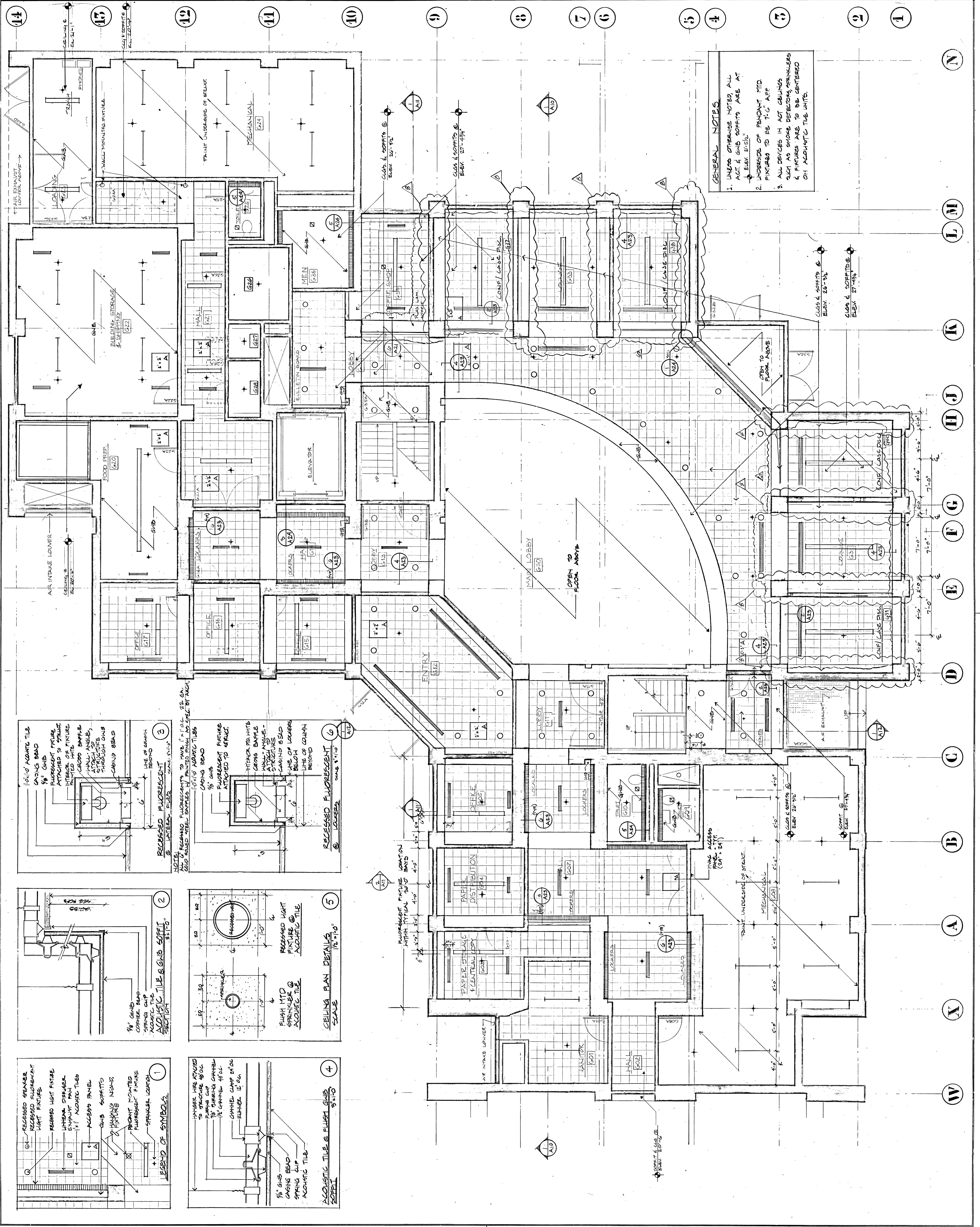
SCALE: 1/4"=1'-0"
 JOB NO: 8172
 DRAWN: P.L.L.
 DATE: 9/29/62
 REVISIONS:
 Δ 9/24/62
 Δ 5/21/63
 Δ 7/1/63

GROUND FLOOR
 REFLECTED CEILING
 PLAN



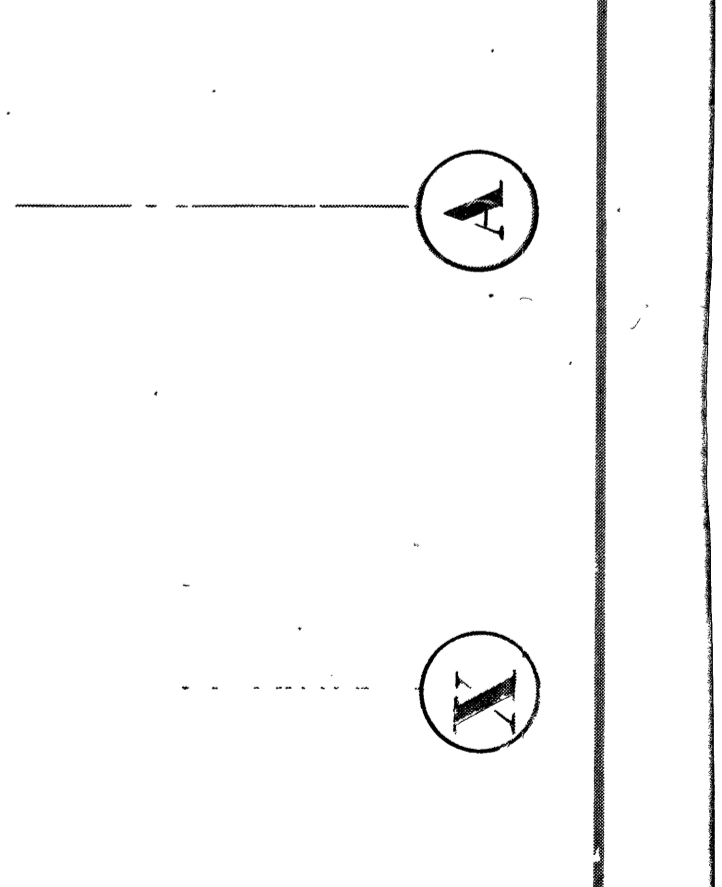
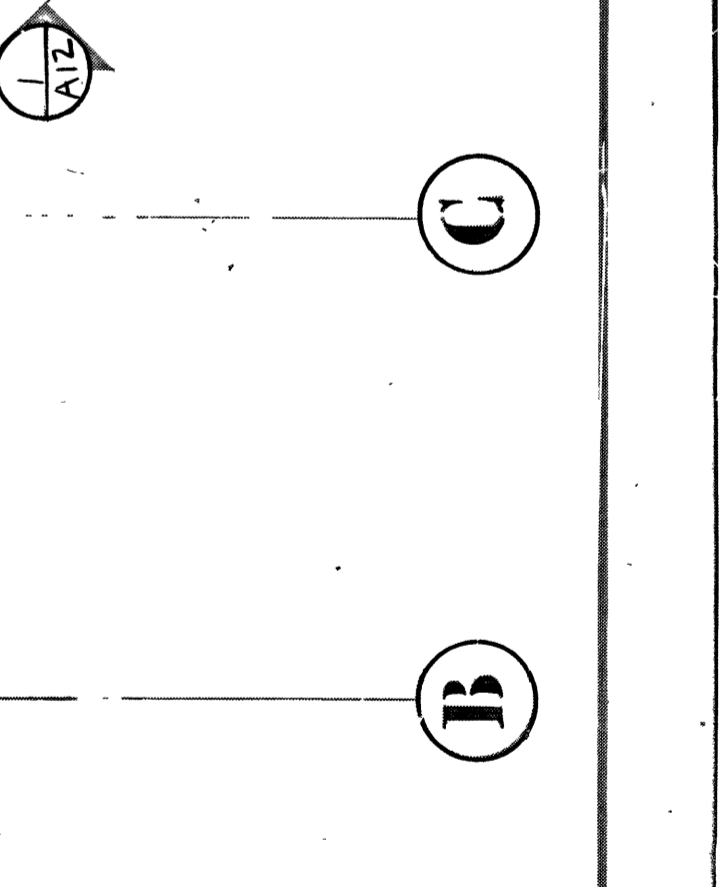
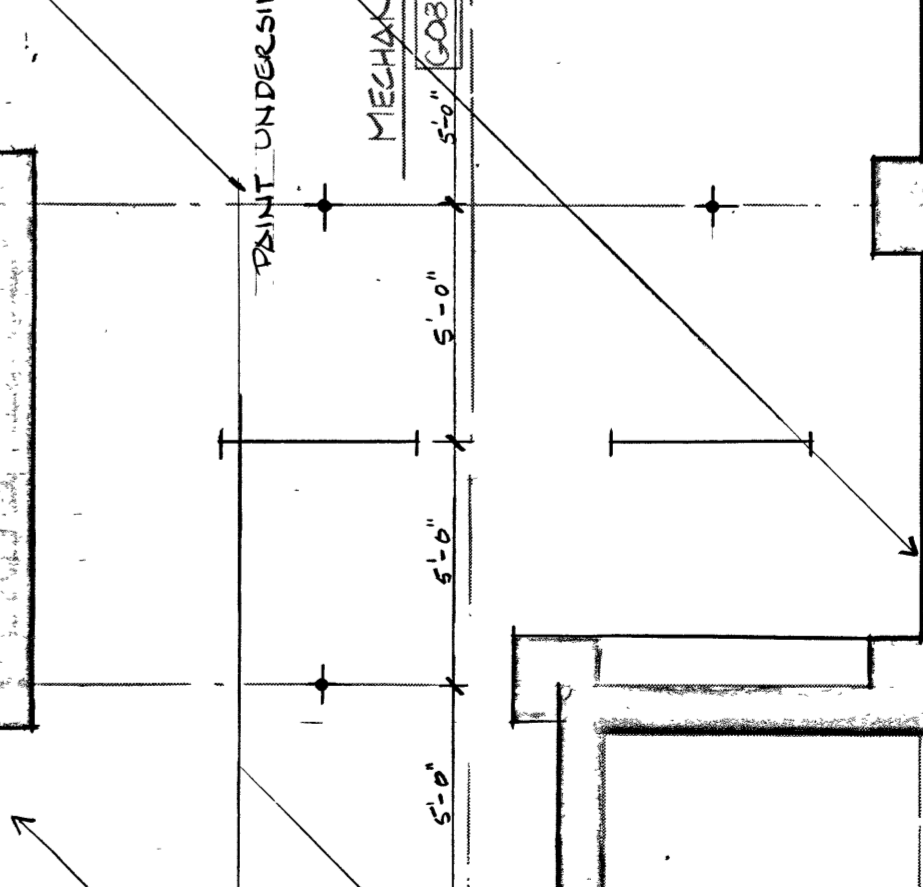
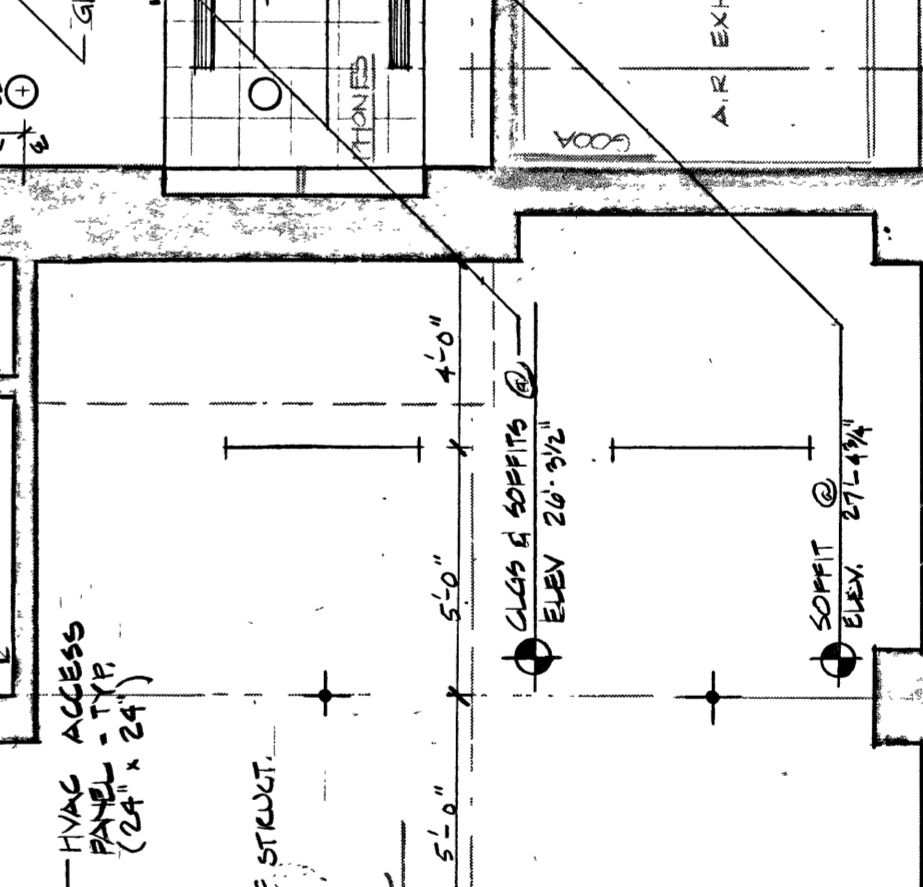
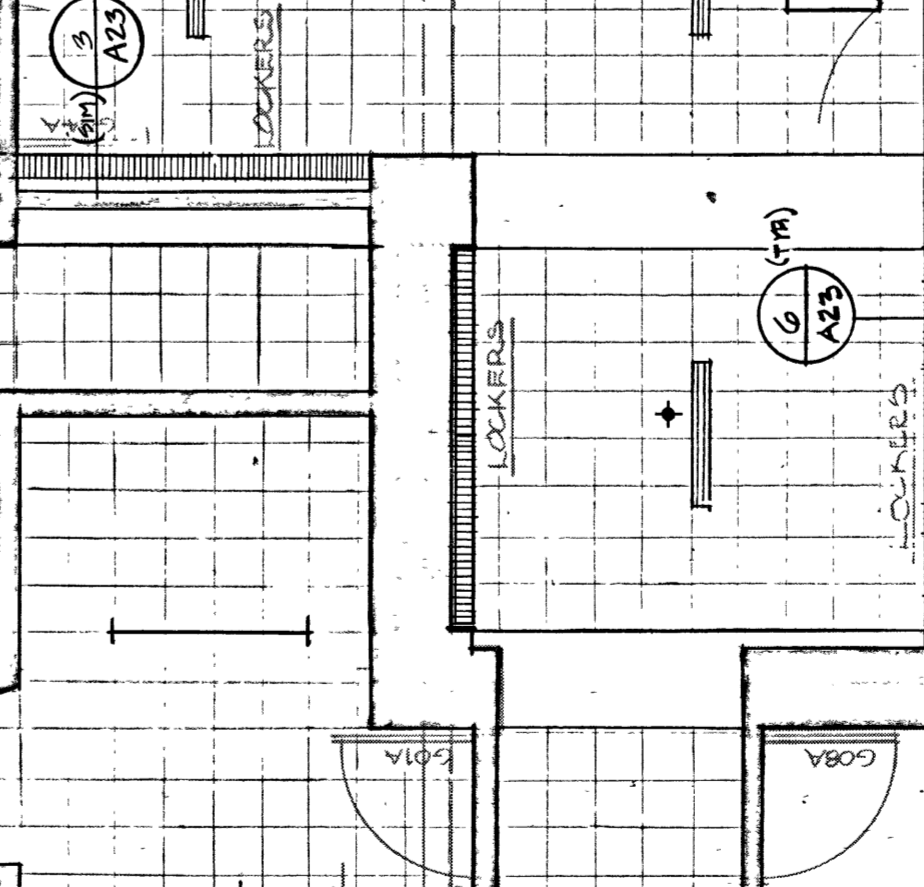
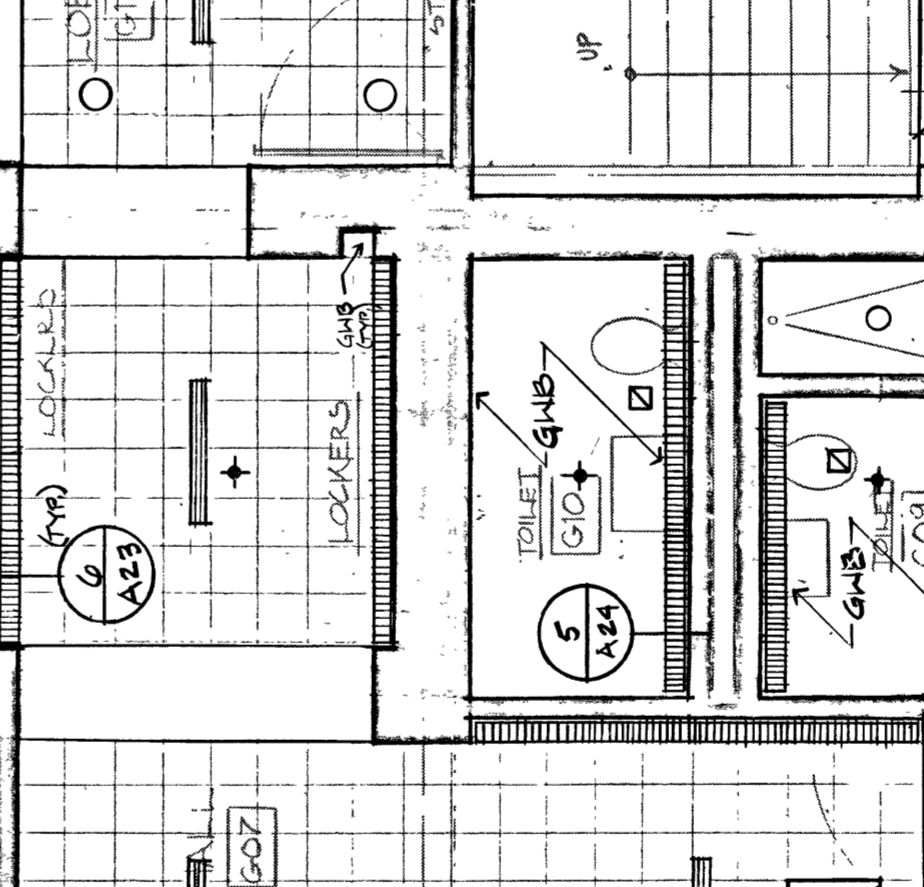
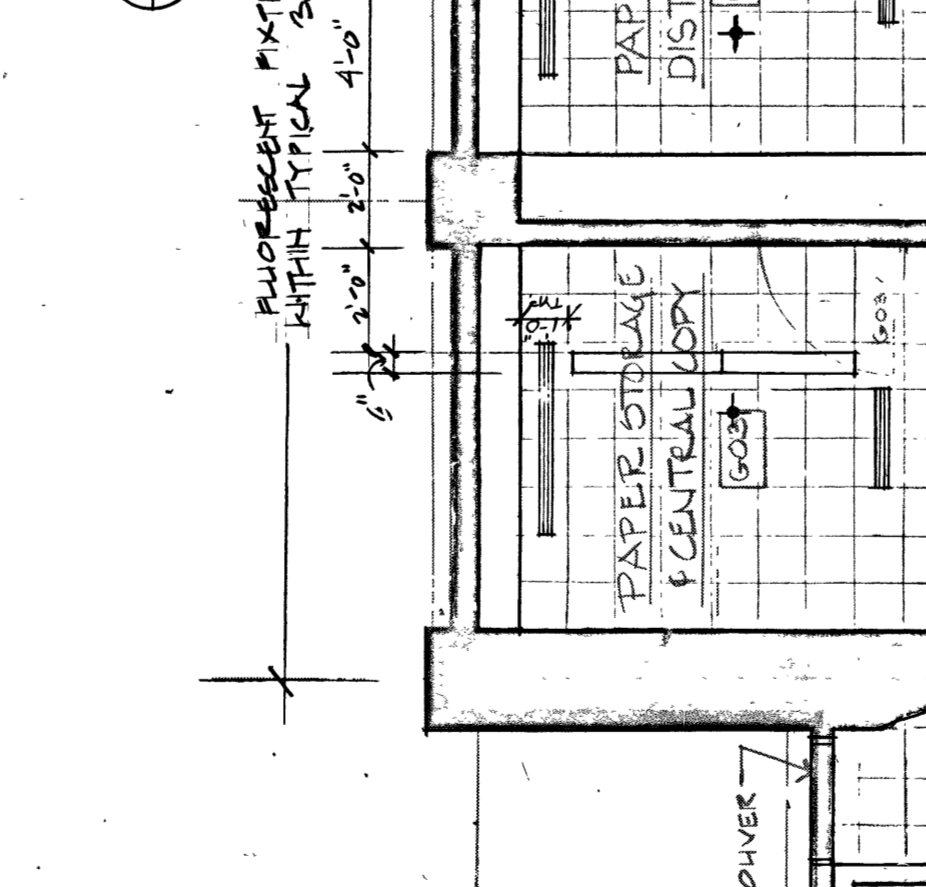
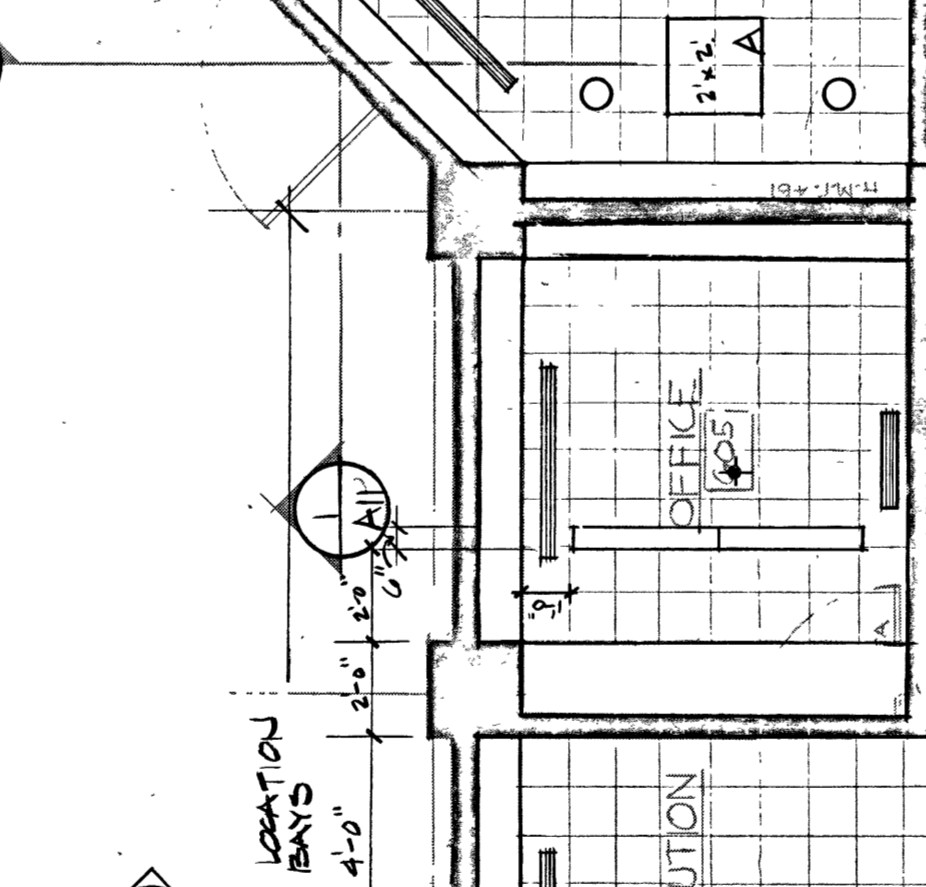
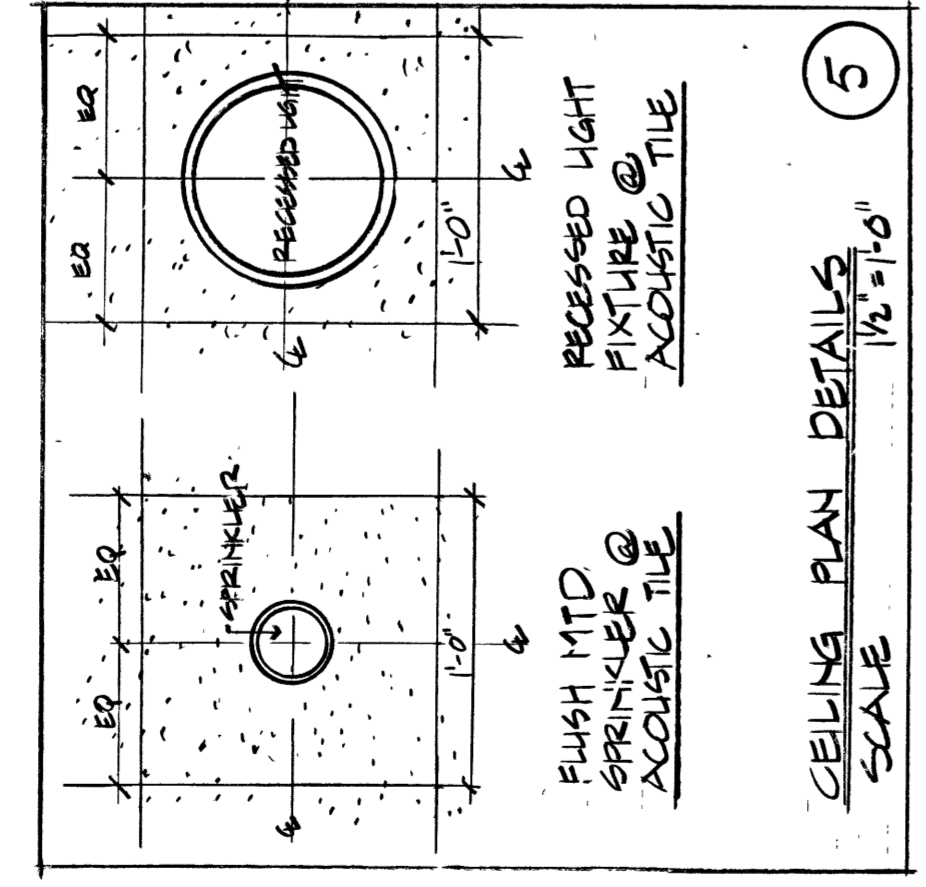
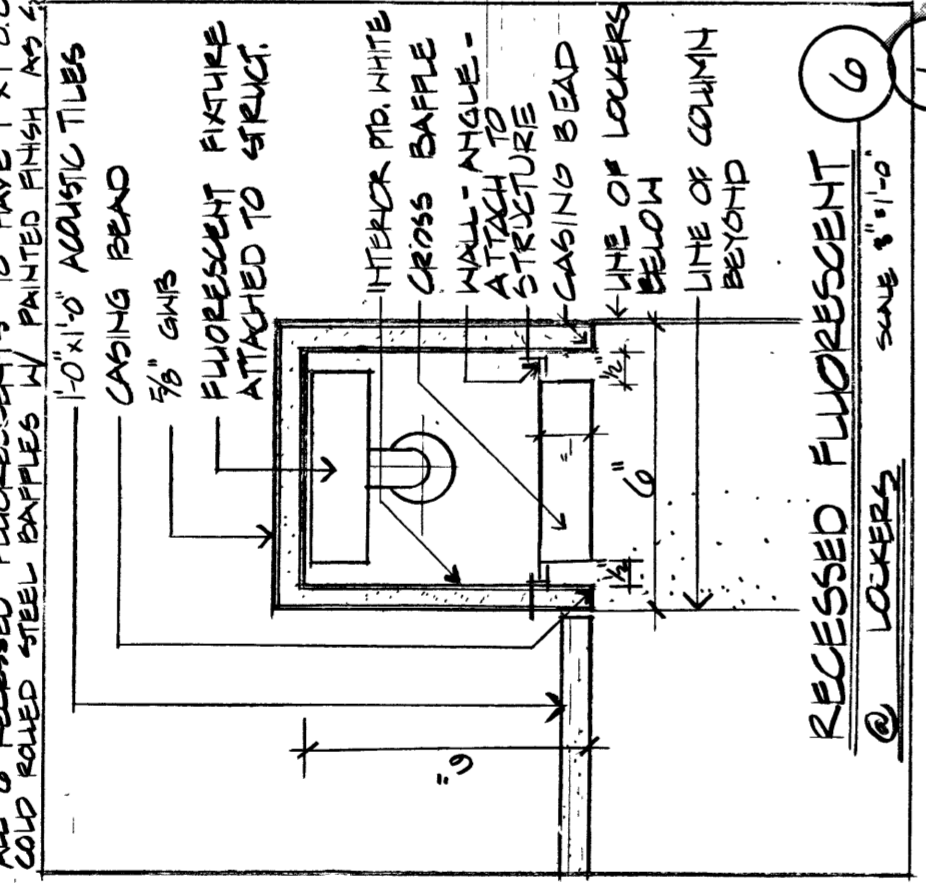
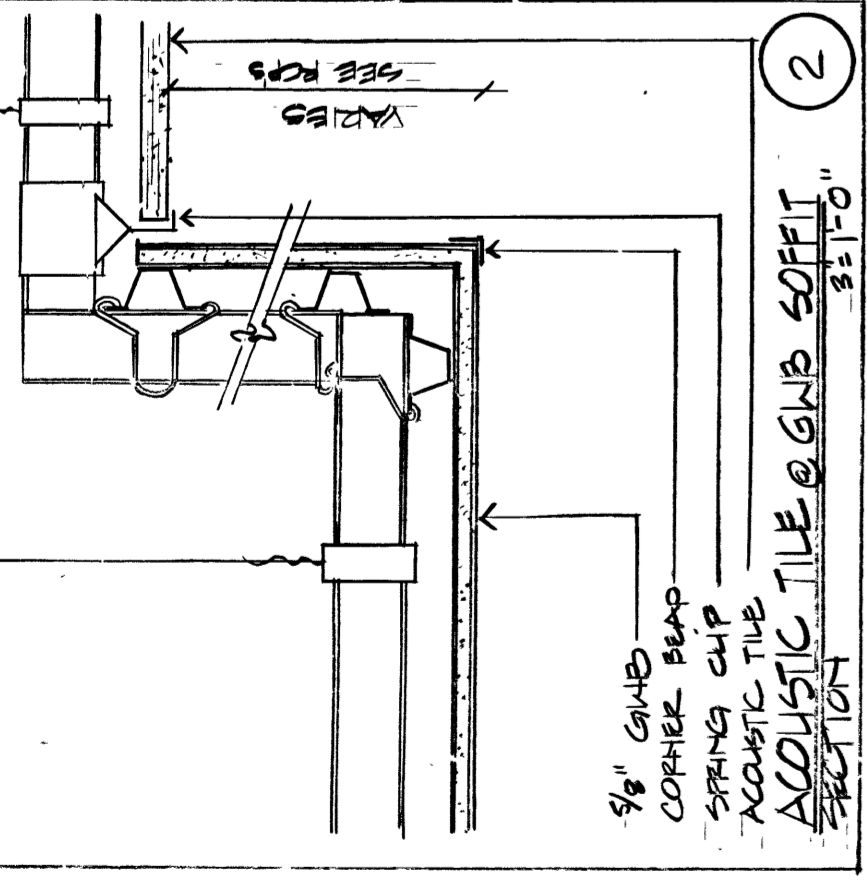
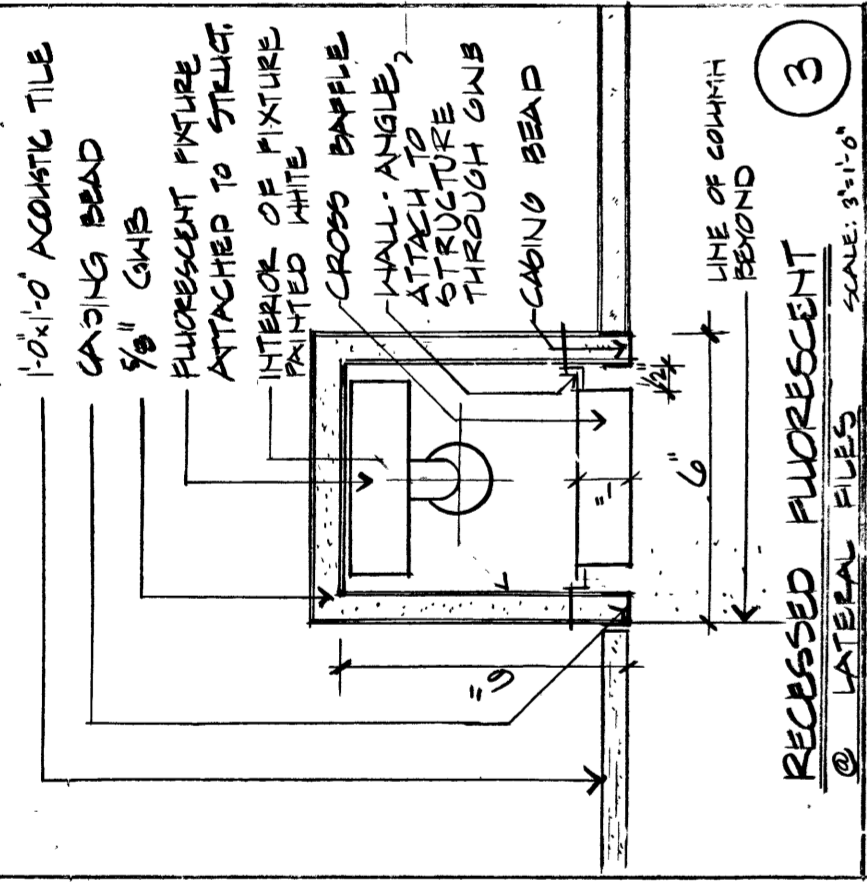
ARCHITECTURAL RESOURCES
CAMBRIDGE INC
 102 MOUNT AUBURN ST
 CAMBRIDGE MA 02138
 TEL. (617) 547-2200

A 25
 767-0035



GENERAL NOTES

1. UNLESS OTHERWISE NOTED, ALL ACT & GMB SOFFITS ARE AT ELEV. 21'-5 1/2"
2. UNDERSIDE OF PENDANT MID FIXTURES TO BE T.C. AFF
3. ALL DEVICES IN ACT CEILINGING SUCH AS SMOKE DETECTORS, SPRINKLERS & FIXTURES ARE TO BE CENTERED ON ACoustIC TILE UNITS.



N
 M
 L
 K
 J
 H
 G
 F
 E
 D
 C
 B
 A
 X
 W