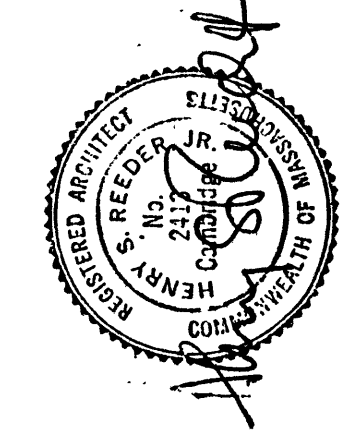


BELFER CENTER
KENNEDY SCHOOL of GOVERNMENT
HARVARD UNIVERSITY

SCALE: 1/4" = 1'-0"
 JOB NO: B/02
 DRAWN: PL
 DATE: 9/21/62
 REVISIONS:
 Δ 10/14/62
 Δ 12/1/62
 Δ 12/1/62
 Δ 5/21/65

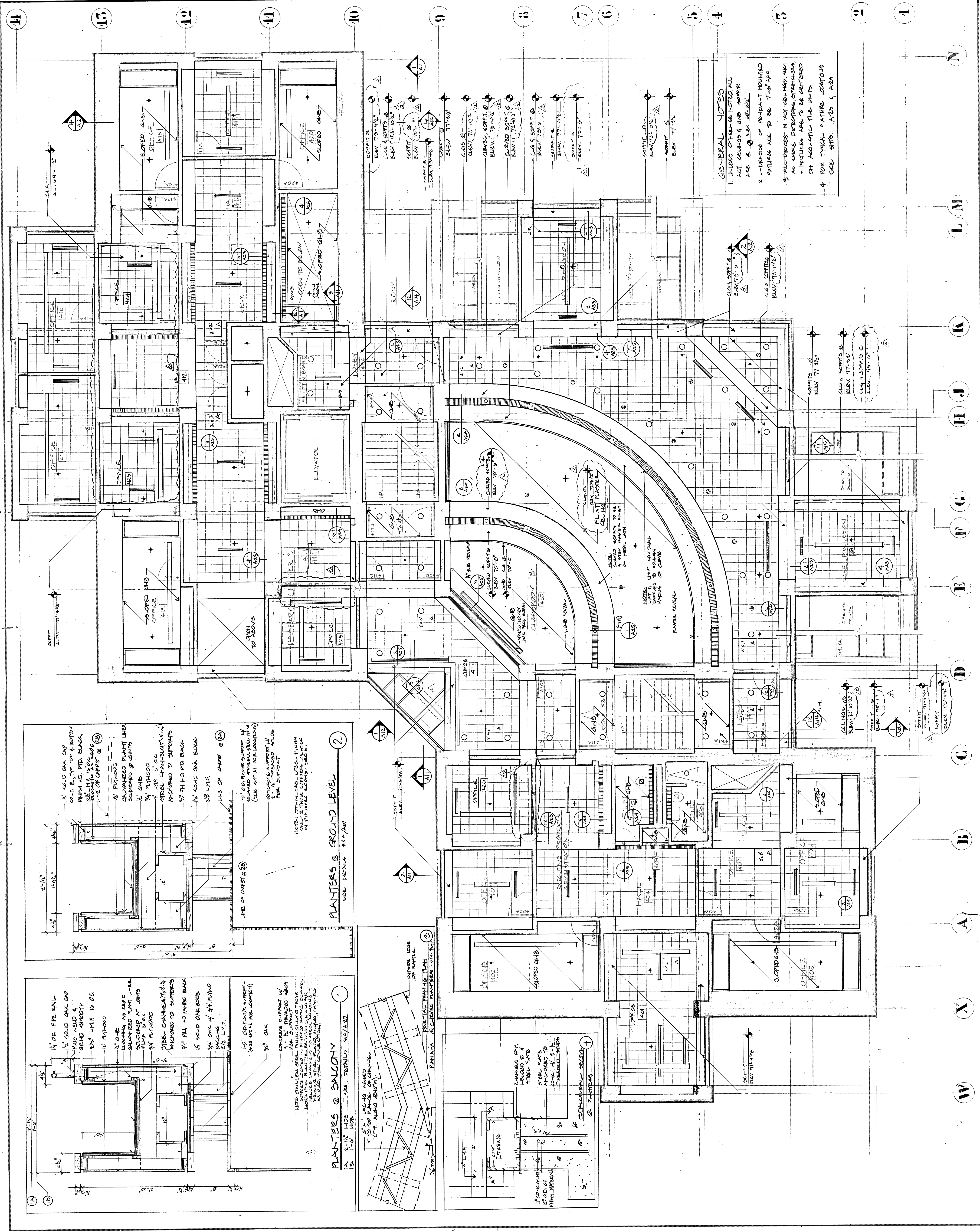
FOURTH FLOOR
 REFLECTED CEILING
 PLAN



ARCHITECTURAL RESOURCES
CAMBRIDGE INC
 102 MOUNT AUBURN ST
 CAMBRIDGE MA 02138
 TEL. (617) 547-2200

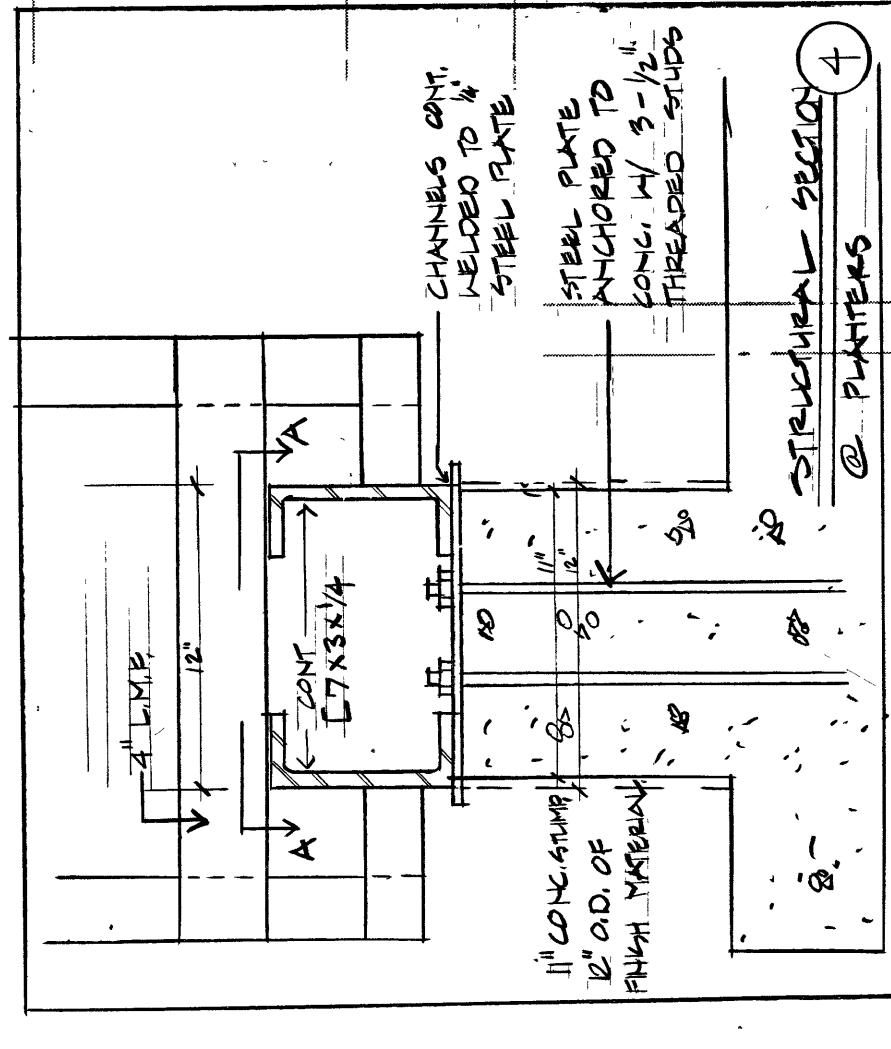
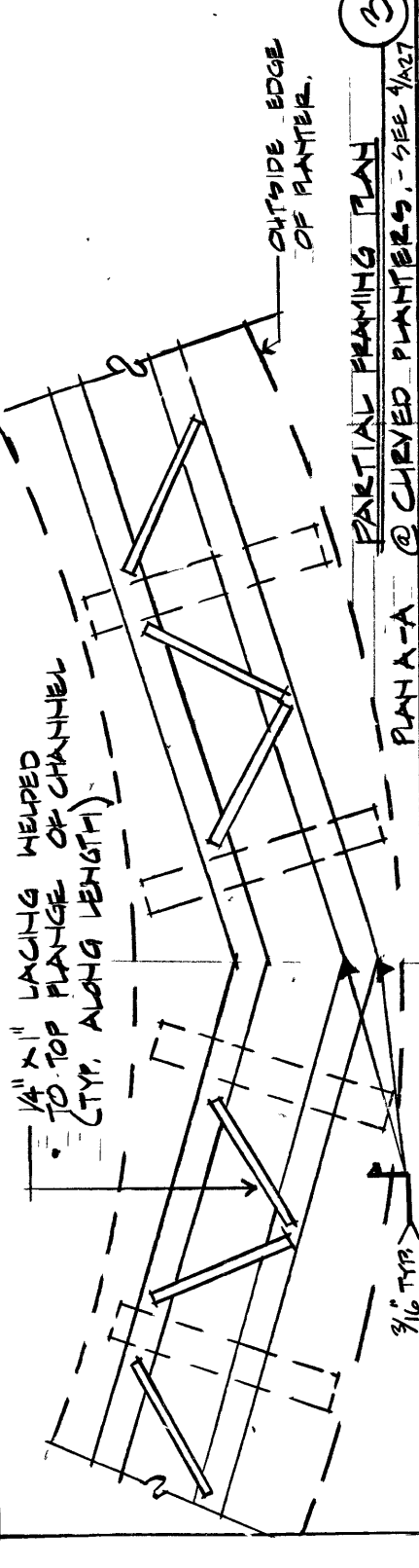
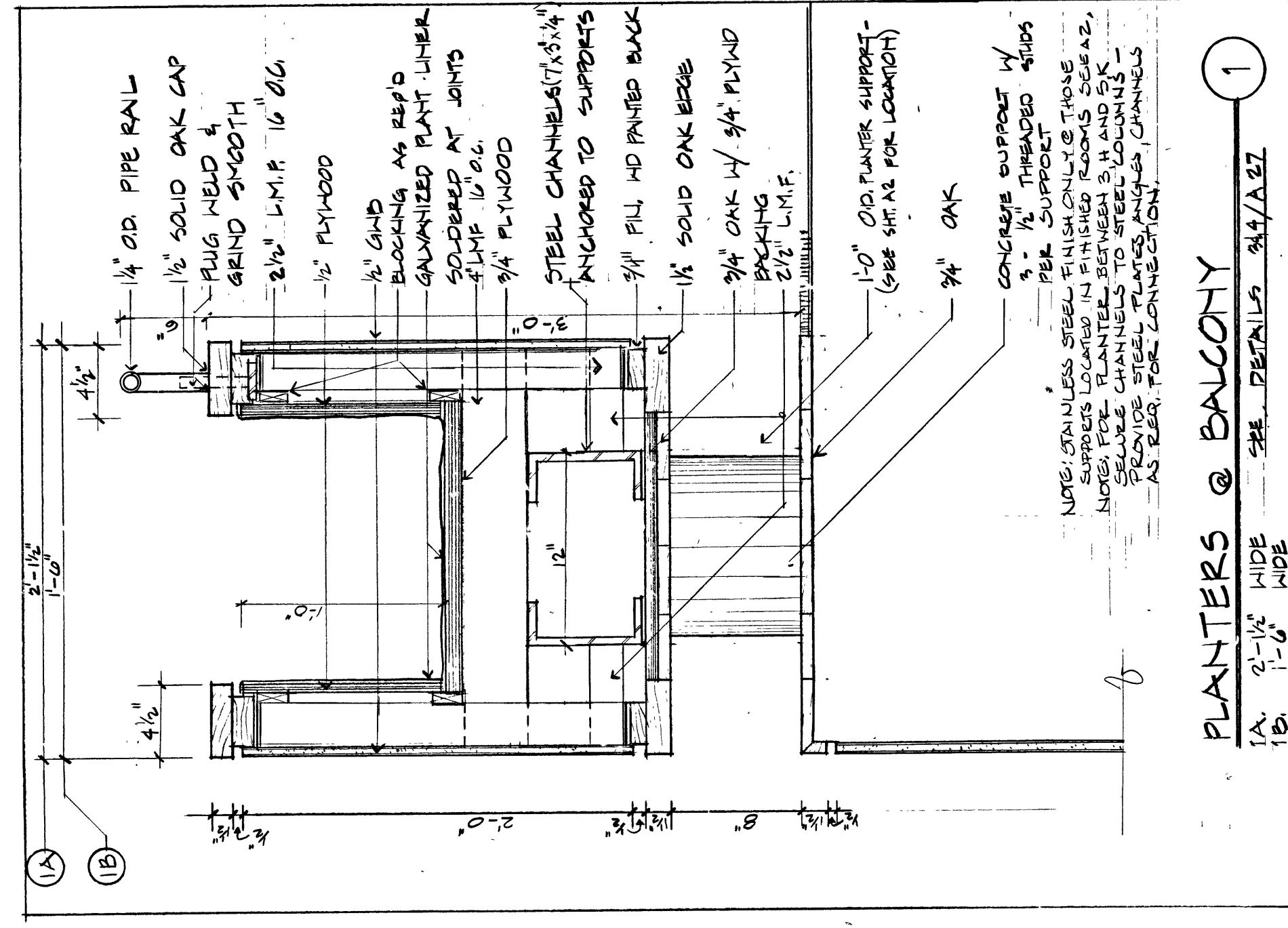
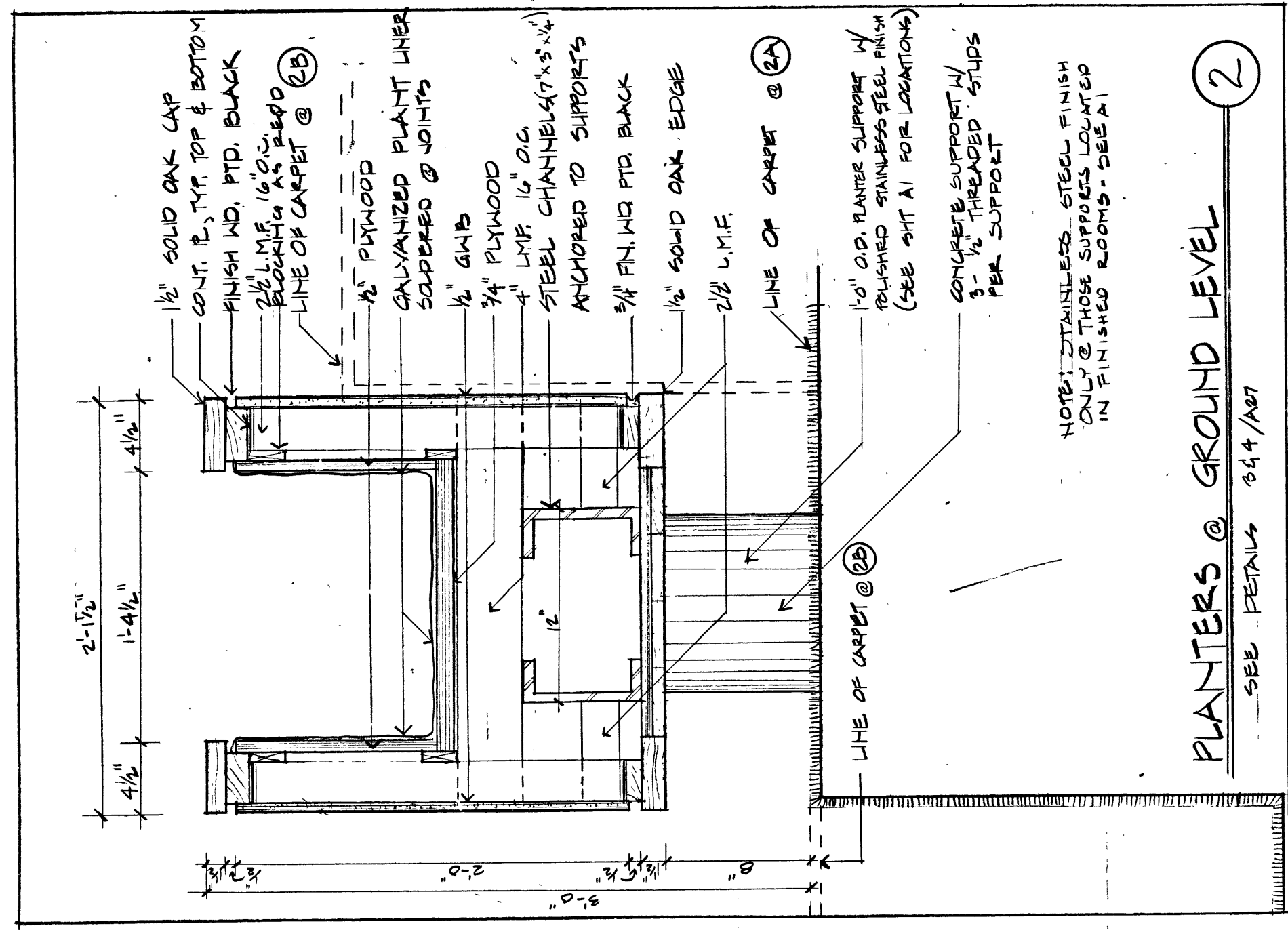
ARZ

707-0039



GENERAL NOTES

1. UNLESS OTHERWISE NOTED ALL ACT. CEILING & GND. SOFFITS ARE @ ELEV. 75'-0"
2. UNDERSIDE OF PENDANT MOUNTED FIXTURES ARE TO BE 7'-6" AFF
3. ALL DEVICES IN ACT. CEILING - SUCH AS SHOCK DETECTORS, SPRINKLERS, & FIXTURES ARE TO BE CENTERED ON ACQUANTIC TILE UNITS
4. FOR TYPICAL FIXTURE LOCATIONS SEE SHTS. A-23 & A-24



N
L
M
K
J
H
G
F
E
D
C
B
A
X
W