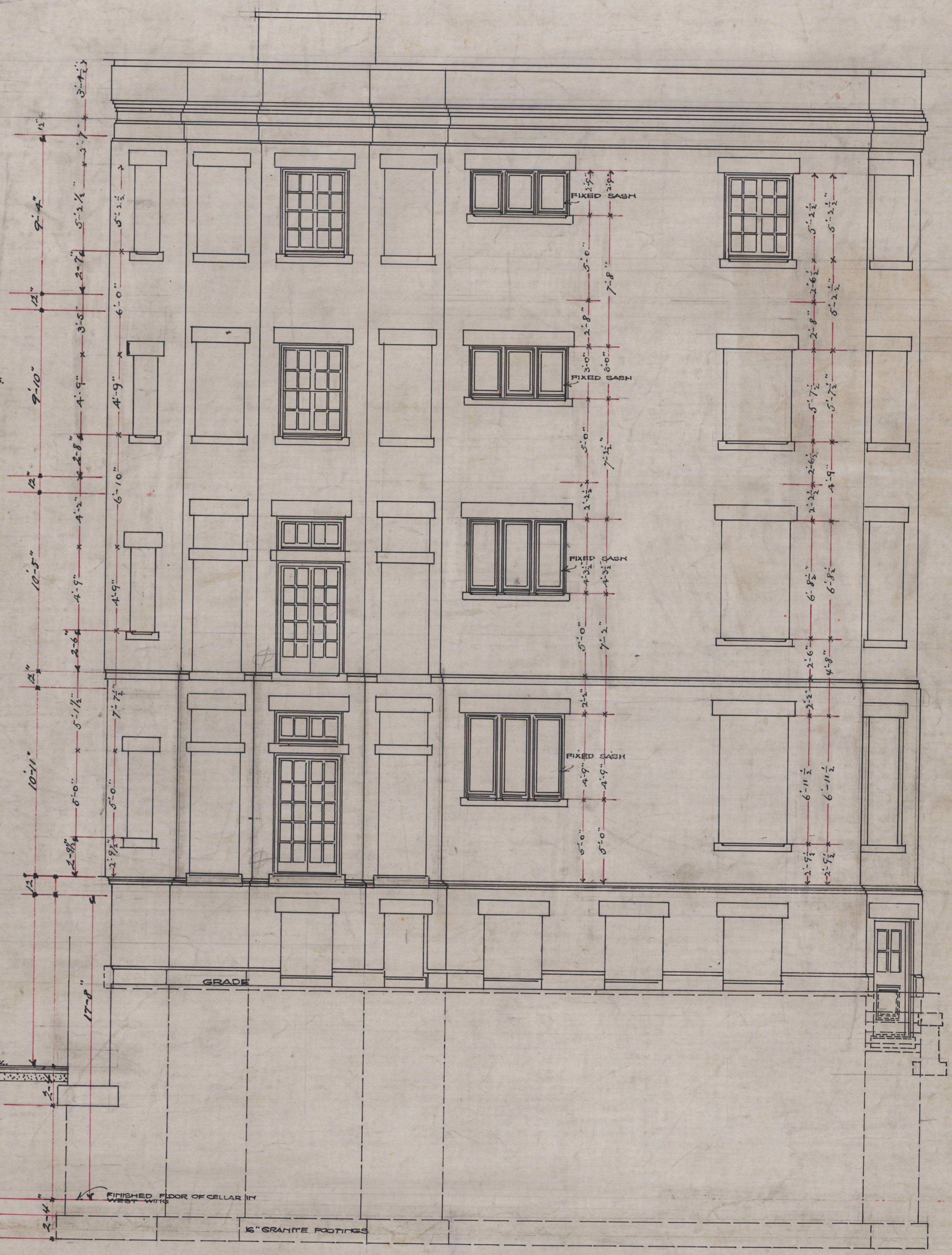


EAST ELEVATION  
SCALE  $\frac{1}{4}'' = 1'0''$



ELEVATION EAST WALL OF COURT  
SCALE  $\frac{1}{4}'' = 1'0''$

DORMITORY  
BOW STREET  
CAMBRIDGE MASS.  
FOR  
C.D. WETMORE ESQ.

no. 8.

John E. Howe, Architect  
158 Fifth Ave. N.Y.  
John E. Howe, Architect  
3 West 29th St. N.Y. City.

915-508

915-508