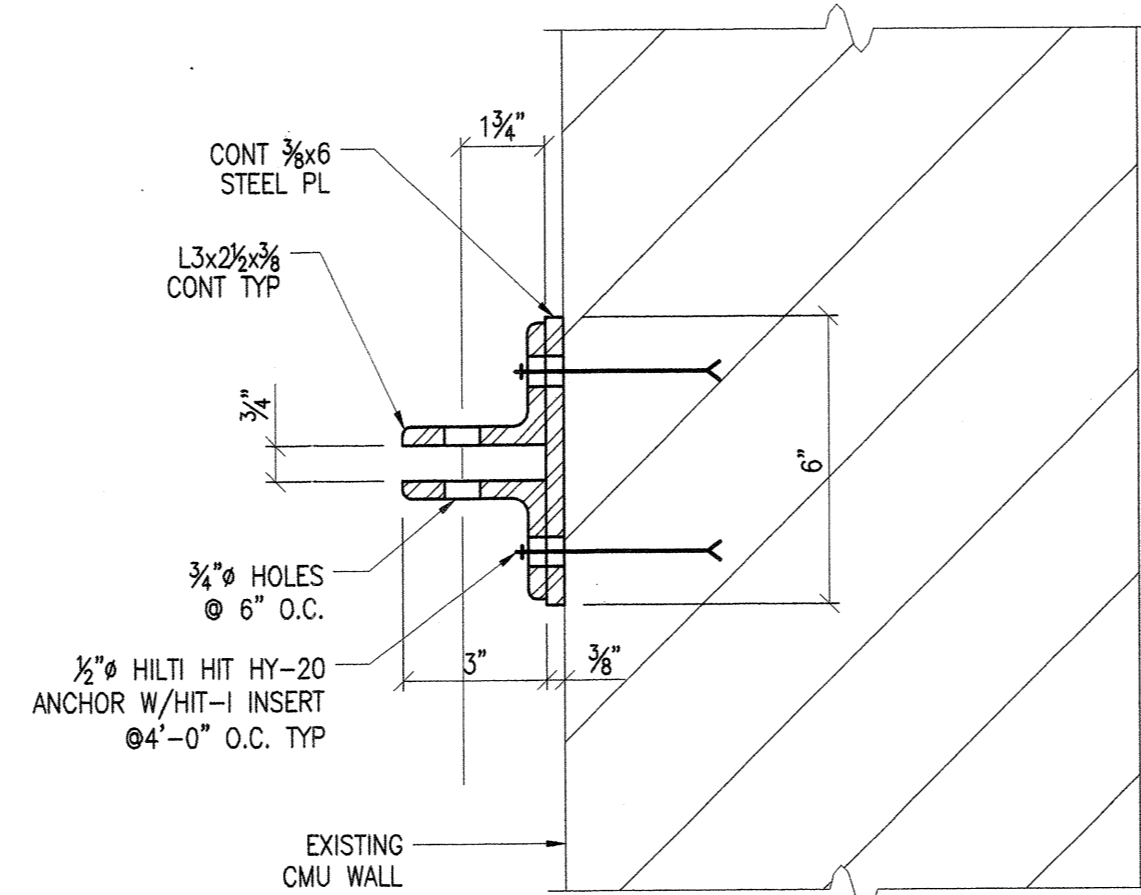
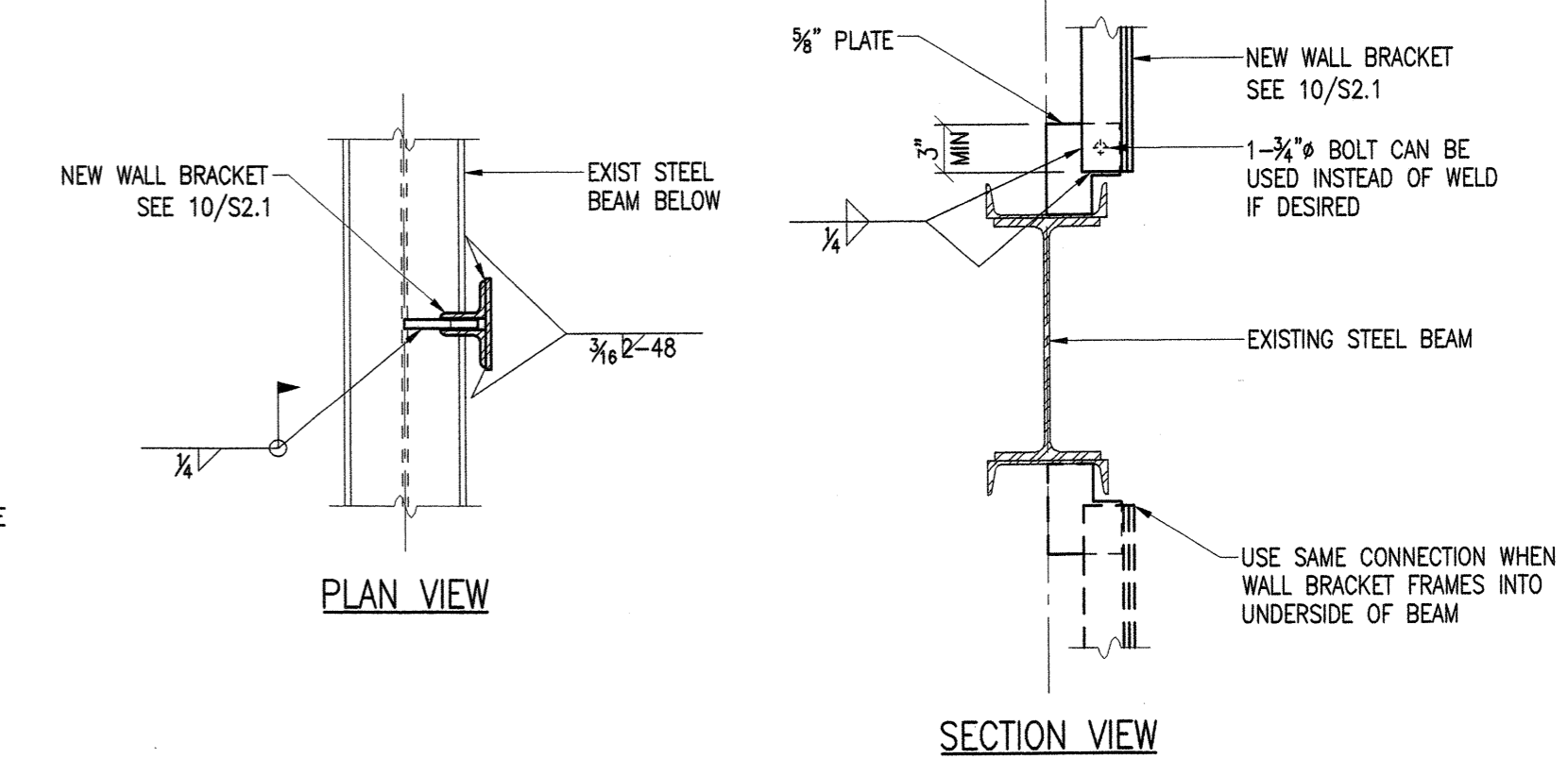


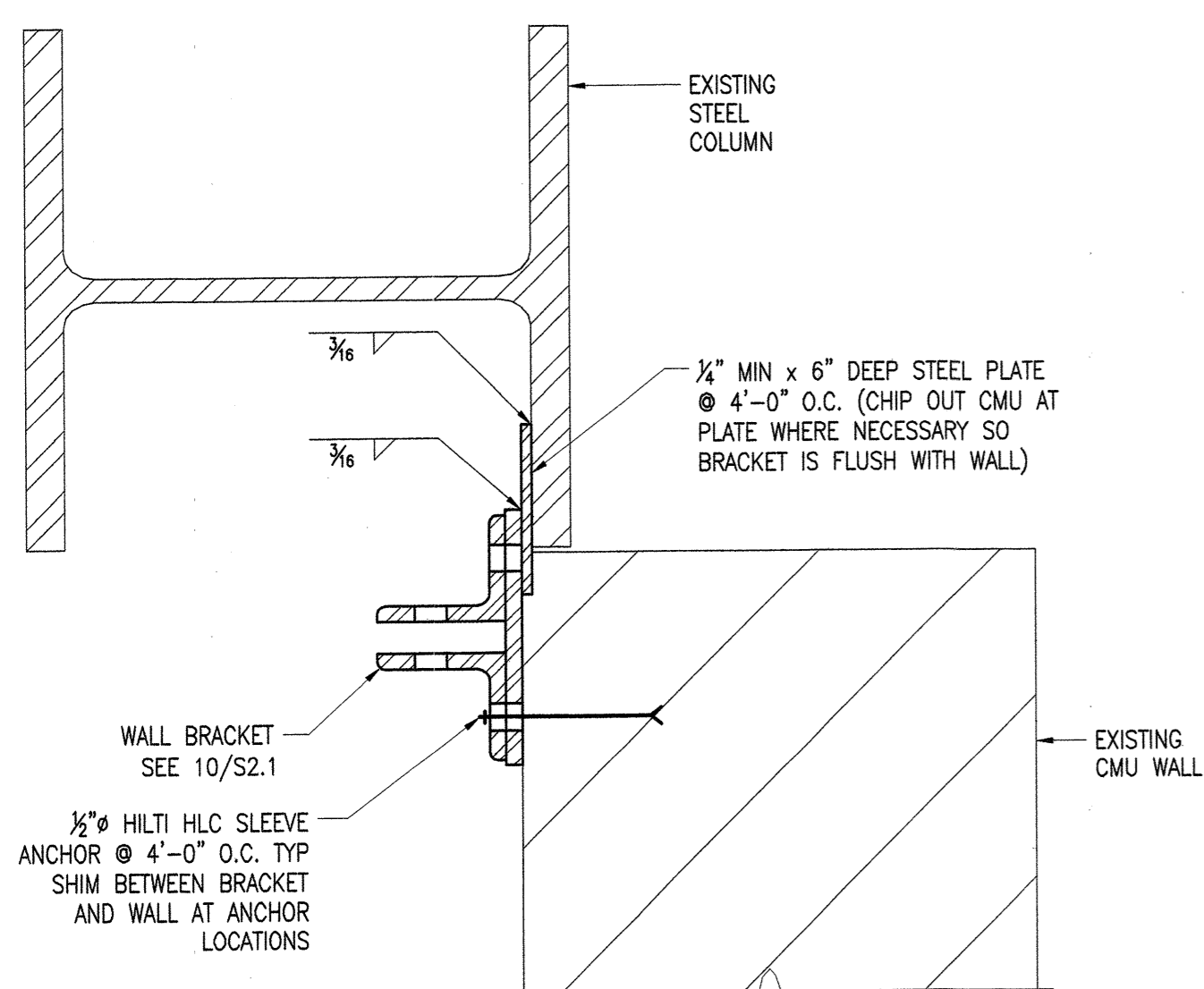
**9 SECTION**  
SCALE : 3/4" = 1'-0"  
NOTE: SEE SECTION 1 ON S2.0 FOR TYPICAL HANGER CONNECTION DETAILS.



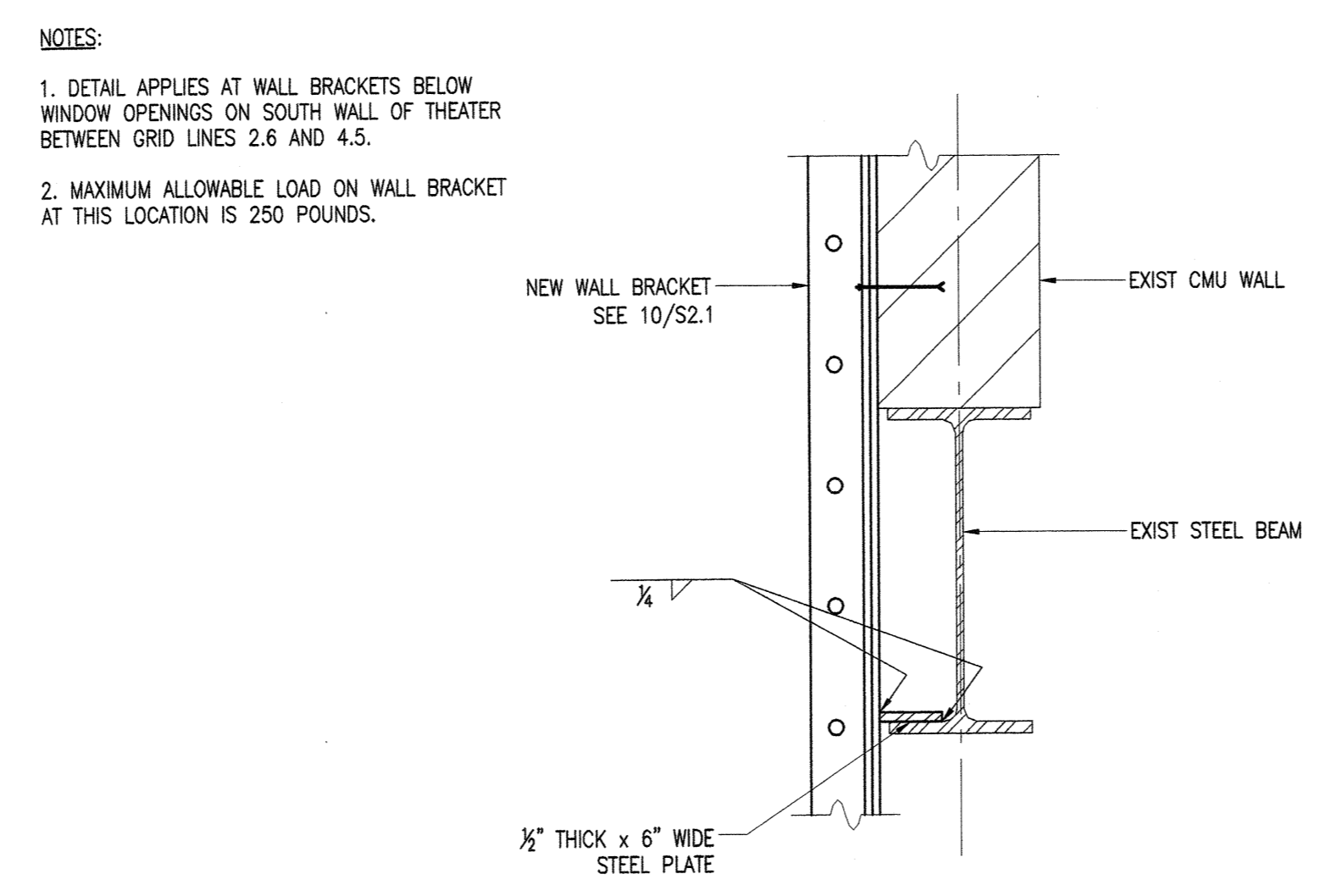
**10 TYPICAL WALL BRACKET DETAIL**  
SCALE : 3" = 1'-0"  
NOTES:  
1. SEE ARCH DWGS FOR BRACKET LOCATIONS.  
2. MAX ALLOWABLE LOAD = 2000 LB PER BRACKET.



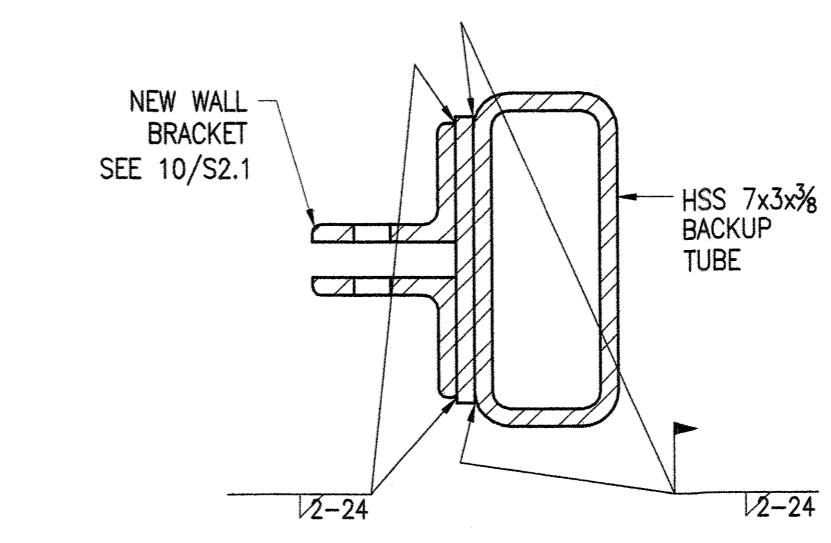
**11 WALL BRACKET CONNECTION TO EXISTING STEEL BEAM AT WINDOW OPENINGS**  
SCALE : 1" = 1'-0"  
NOTES:  
1. DETAIL APPLIES AT WALL BRACKETS SPANNING ACROSS WINDOW OPENINGS ON SOUTH WALL OF THEATER BETWEEN GRID LINES 2.6 AND 4.5.  
2. DETAIL ASSUMES THAT THE MAXIMUM WINDOW HEIGHT (UNBRACED LENGTH OF WALL BRACKET) ABOVE OR BELOW THE EXISTING STEEL BEAM IS 8'-0".  
3. WALL BRACKET TO BE BOLTED TO CMU WALL WITHIN 6" OF EDGE OF WINDOW OPENING USING DETAIL SHOWN ON 10/S2.1.  
4. MAXIMUM ALLOWABLE LOAD ON WALL BRACKETS ACROSS WINDOW OPENINGS IS 250 POUNDS.



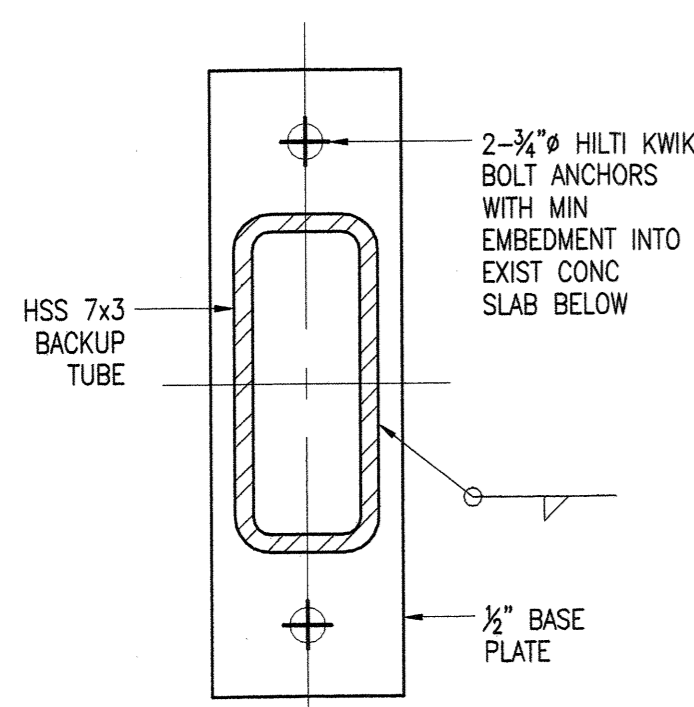
**12 WALL BRACKET DETAIL AT COLUMN F-6**  
SCALE : 3" = 1'-0"  
NOTES:  
1. VERIFY LOCATION OF WALL BRACKET IN FIELD.  
2. MAX ALLOWABLE LOAD = 2000 LB PER BRACKET.



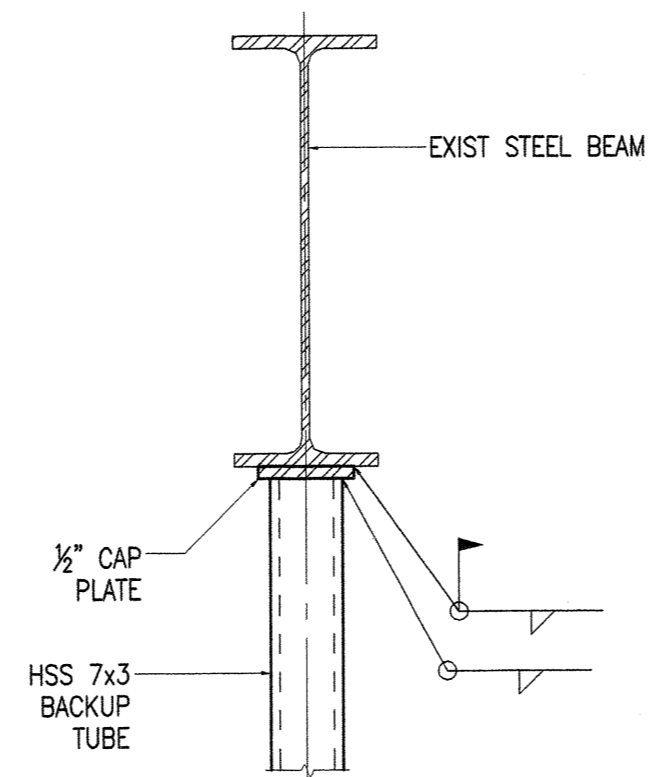
**13 WALL BRACKET BOTTOM CONNECTION TO EXISTING STEEL BEAM BELOW WINDOW OPENINGS**  
SCALE : 1-1/2" = 1'-0"  
NOTES:  
1. DETAIL APPLIES AT WALL BRACKETS BELOW WINDOW OPENINGS ON SOUTH WALL OF THEATER BETWEEN GRID LINES 2.6 AND 4.5.  
2. MAXIMUM ALLOWABLE LOAD ON WALL BRACKET AT THIS LOCATION IS 250 POUNDS.



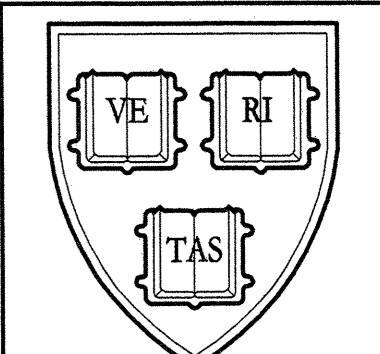
**14 WALL BRACKET DETAIL AT LIGHTGAUGE STEEL WALLS**  
SCALE : 3" = 1'-0"  
NOTES:  
1. DETAILS APPLY ALONG GRID LINE F BETWEEN GRID LINES 1.2 AND 2.6 IN THEATER SPACE.  
2. MAX ALLOWABLE LOAD = 2000 LB PER BRACKET.



**15 BACKUP TUBE BASE DETAIL AT LIGHTGAUGE STEEL WALLS**  
SCALE : 3" = 1'-0"

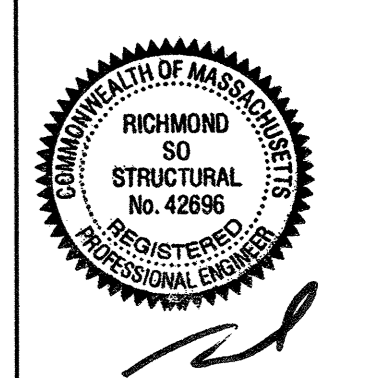


**16 BACKUP TUBE TOP DETAIL AT LIGHTGAUGE STEEL WALLS**  
SCALE : 1-1/2" = 1'-0"  
(NOTE: CAP PLATE CAN BE FIELD BOLTED TO EXIST BEAM INSTEAD OF FIELD WELDED IF DESIRED)



ALLIED CONSULTANTS  
RICHMOND SO ENGINEERS  
SCHIRMER ENGINEERING  
COLLECTIVE WISDOM CORPORATION  
T: 978.443.7880  
T: 617.923.4800  
T: 508.872.3033  
T: 781.641.7732

**A.R.T. BLACK BOX THEATRE AT 2-4 ARROW STREET, CAMBRIDGE MA**  
HARVARD REAL ESTATE SERVICES / AMERICAN REPERTORY THEATRE  
MARYANN THOMPSON ARCHITECTS  
14 HILLSIDE AVENUE  
CAMBRIDGE, MA 02140  
F: 617.481.3844  
© MARYANN THOMPSON ARCHITECTS



SET	DATE

CURRENT ISSUE:  
SET DATE  
RECORD DRAWINGS 04.30.05

DRAWING TITLE:  
STRUCTURAL SECTIONS

**S2.1**