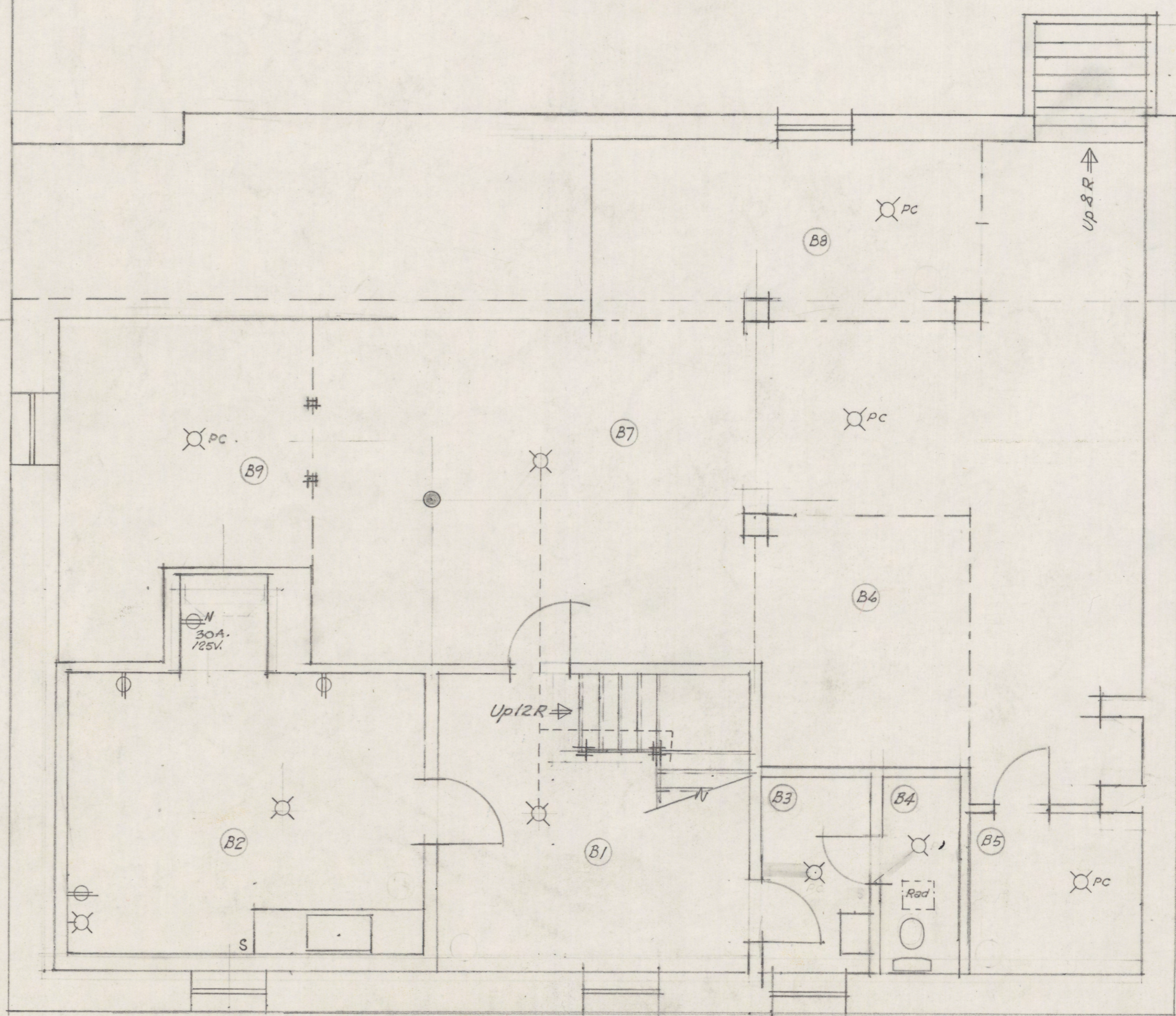


Room Nos B1 thru B10



Basement Plan  
Scale 1/4" = 1'-0"

HARVARD UNIVERSITY		
DEPARTMENT OF BUILDINGS AND GROUNDS		
1541 MASS. AVE., CAMBRIDGE, MASS. 02138		
<u>53-53A CHURCH STREET</u>		
<u>CAMBRIDGE, MASS.</u>		
Revisions	Scale 1/4" = 1'-0"	Date 2/1/66
Dr. by EHE		DWG. 1
App. by		
File No.	365-1	