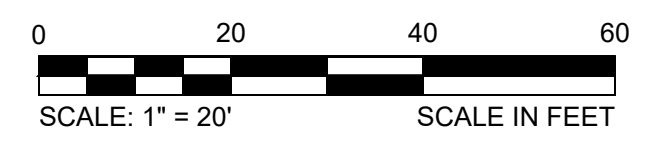
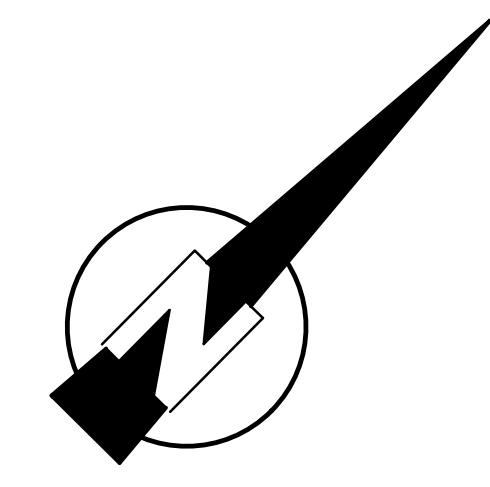
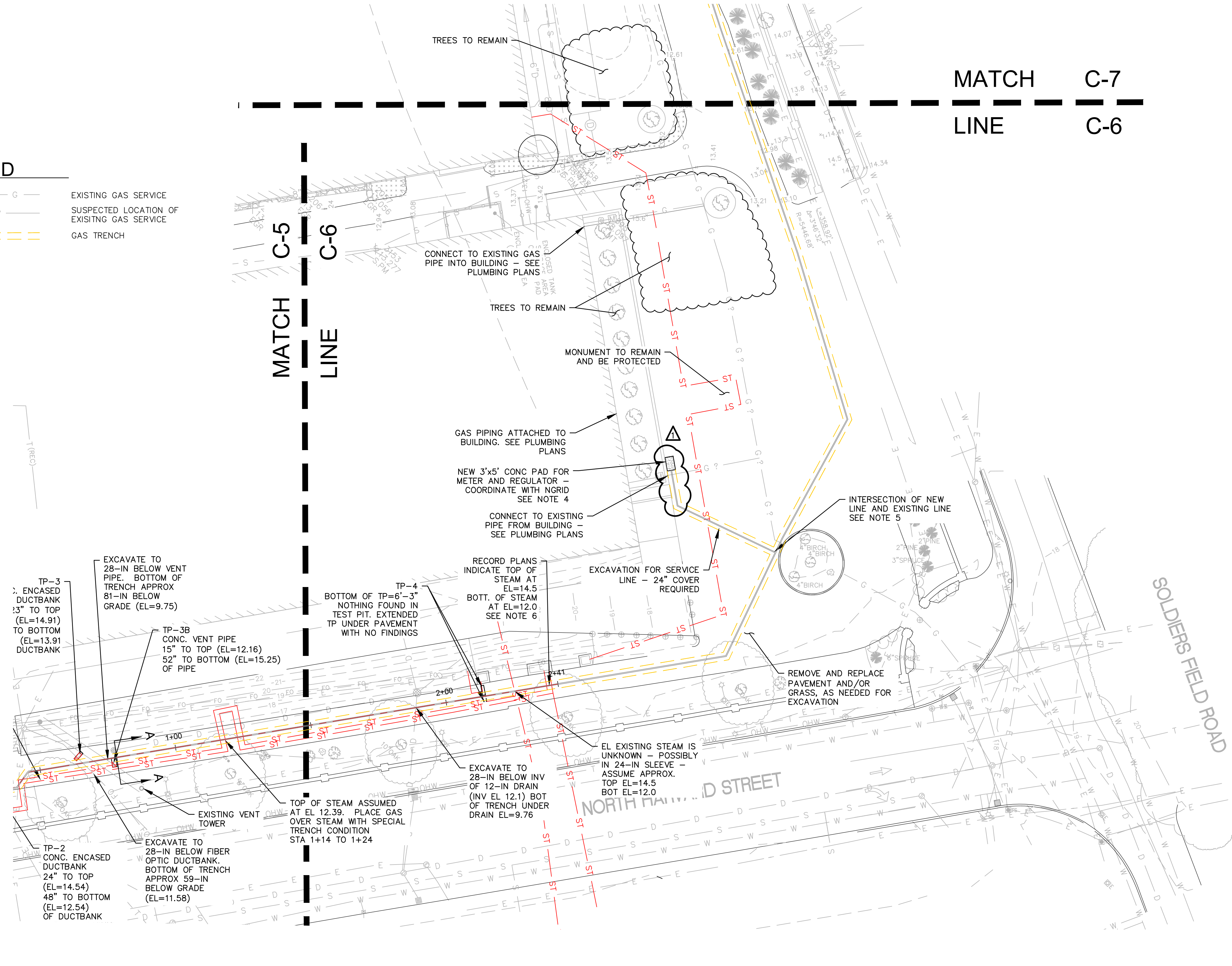


CAD FILE: C:\Users\Ryan_Claassen\Documents\Bristol\Engineering\clients\Harvard_University\Harvard Stadium Gas Test PVT DESIGN 2022-09-19.dwg LAYOUT: C-6 GAS TRENCH2

LEGEND

- EXISTING GAS SERVICE
- SUSPECTED LOCATION OF EXISTING GAS SERVICE
- GAS TRENCH



- NOTES**
- PIPE AND FITTINGS TO BE SUPPLIED AND INSTALLED BY NATIONAL GRID. PIPE SHOWN FOR REFERENCE. PIPE SIZE HAS BEEN DETERMINED BY NGRID TO BE A 4" STEEL PIPE. THE TRENCH WIDTH IS SHOWN AS A 36" WIDE TRENCH BASED ON DISCUSSIONS WITH NGRID AND THE NEED FOR FIELD WELDING (NGRID STANDARD DETAIL IS 18" WIDE TRENCH). TRENCH WIDTH SHALL INCREASE AS NEEDED TO ACCOMMODATE WELDING JOINTS INSIDE THE TRENCH WHERE REQUIRED. ACTUAL TRENCH DEPTH AND WIDTH WILL DEPEND ON FIELD CONDITIONS.
 - NGRID TO PROVIDE AND BOND TO INSTALL GAS WARNING TAPE WITHIN TRENCH DURING BACKFILLING.
 - COORDINATE WITH NGRID FOR LOCATION OF TRENCH, IF POSSIBLE, STAYING CLEAR OF THE TREE DRIPLINES IS PREFERRED.
 - RECORD DRAWING "SITE UTILITY PLAN" DRAWING NUMBER C-3, REV 1 BY D'AUGUSTINO IZZO QUIRK ARCHITECTS DATED 9-26-97 (PIRC NUMBER 119_0053).
 - PROVIDE A MINIMUM 12-IN SEPARATION BETWEEN TOP OF STEAM AND BOTTOM OF GAS, 18-IN SEPARATION IS PREFERRED IF SPACE ALLOWS.
 - RECORD DRAWING "PHASE ONE SITE UTILITIES HEATING DETAILS" DRAWING NUMBER 2.32 BY TAC DATED 4-28-1976. (PIRC NUMBER 862_0027). ACCORDING TO THE PLAN, THE STEAM IS SLOPED FROM STEAM MANHOLE AT BLODGETT TO ENTRANCE ON THE WEST SIDE OF MURR.

PROJECT NO.	RESPONSE TO RFIs #1 & #2	DATE
XX 1	01/10/24	01/10/24
DRAWN BY	FINAL CONSTRUCTION SET	DATE
RDC	01/08/24	01/08/24
CHECKED BY	CONFORMED SET: TRENCH WIDTH, BOLLARDS, CONC. PAD AT RINK	DATE
TAT	06/16/23	06/16/23
FILE NAME	DESCRIPTION	REVISIONS

HARVARD UNIVERSITY
 HARVARD ATHLETICS AREA GAS MAIN PROJECT
 GAS TRENCH PLAN-2

