

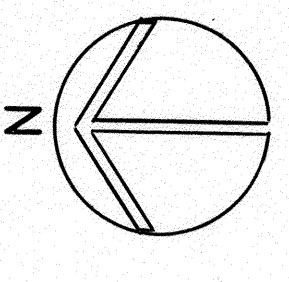
THE DIVISION
OF
CONTINUING EDUCATION

BENJAMIN THOMPSON & ASSOCIATES, INC.
ARCHITECTURE, PLANNING, AND URBANISM
ONE STORY STREET
CAMBRIDGE, MA 02138
(617) 876-4900 FAX (617) 861-9213, 866-5025

Cosentini Consulting Engineers
14 Brattle Street
Cambridge, Massachusetts 02138
(617) 876-3830 FAX (617) 876-8647

LeMessurier Consultants
1033 Massachusetts Avenue
Cambridge, Massachusetts 02138
(617) 868-1200 FAX (617) 661-7520

RENOVATIONS
TO
51 BRATTLE STREET



- NOTES**
1. PUMPS, WORK STARTS AT HOUSING SIDE OF GAS METER (GAS COMPANY SHALL INSTALL SERVICE FROM STREET) GAS METER IS LOCATED IN FIRE PUMP ROOM.
 2. FOR CONTINUATION OF PIPING INSIDE BUILDING SEE DUGS P.1 & P.2

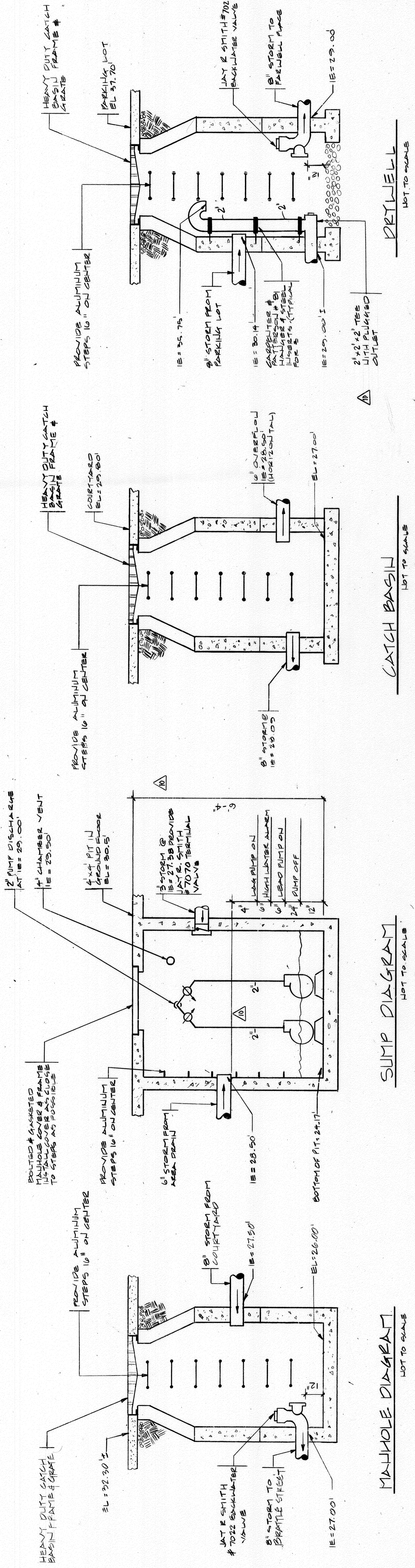
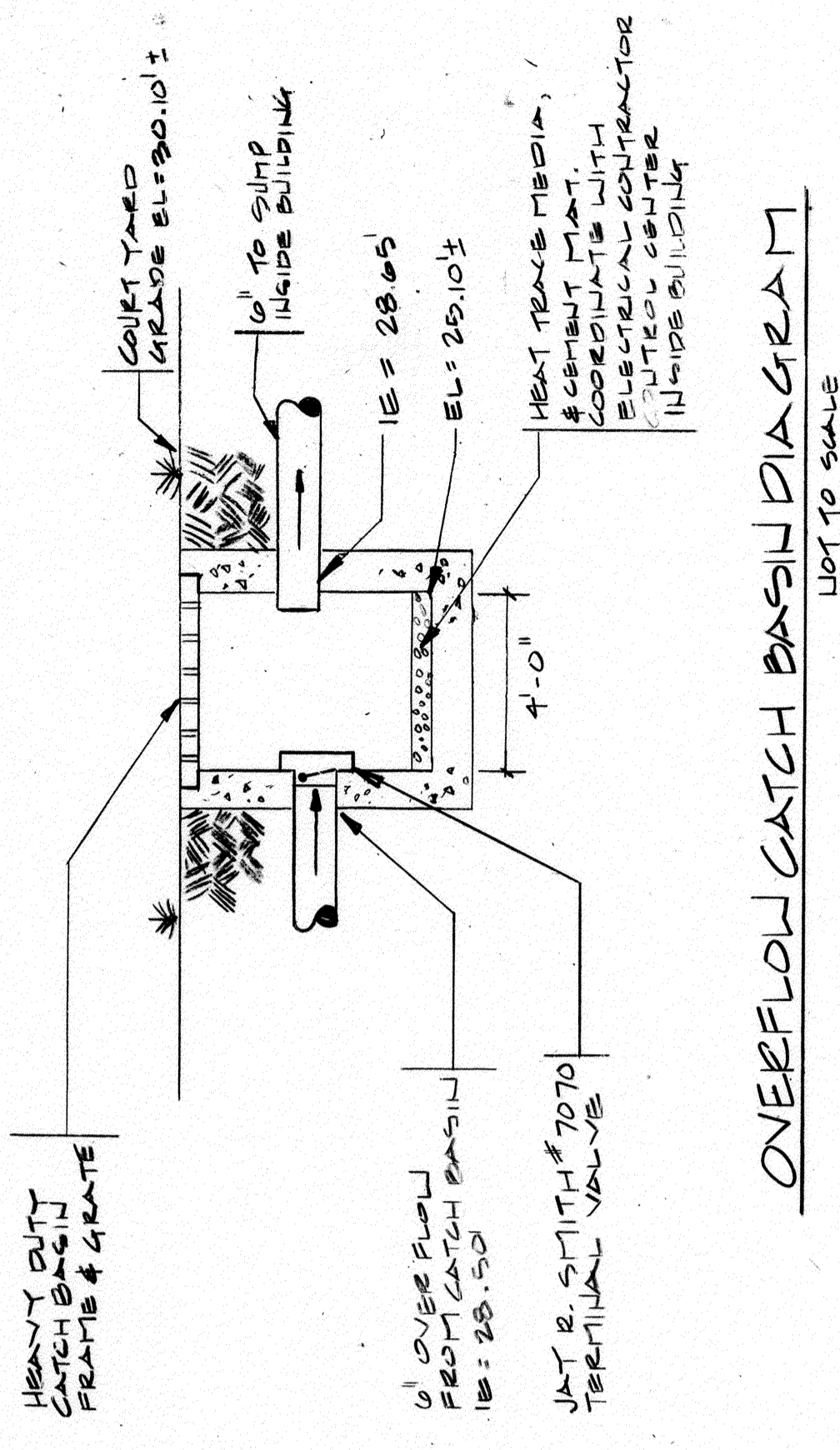
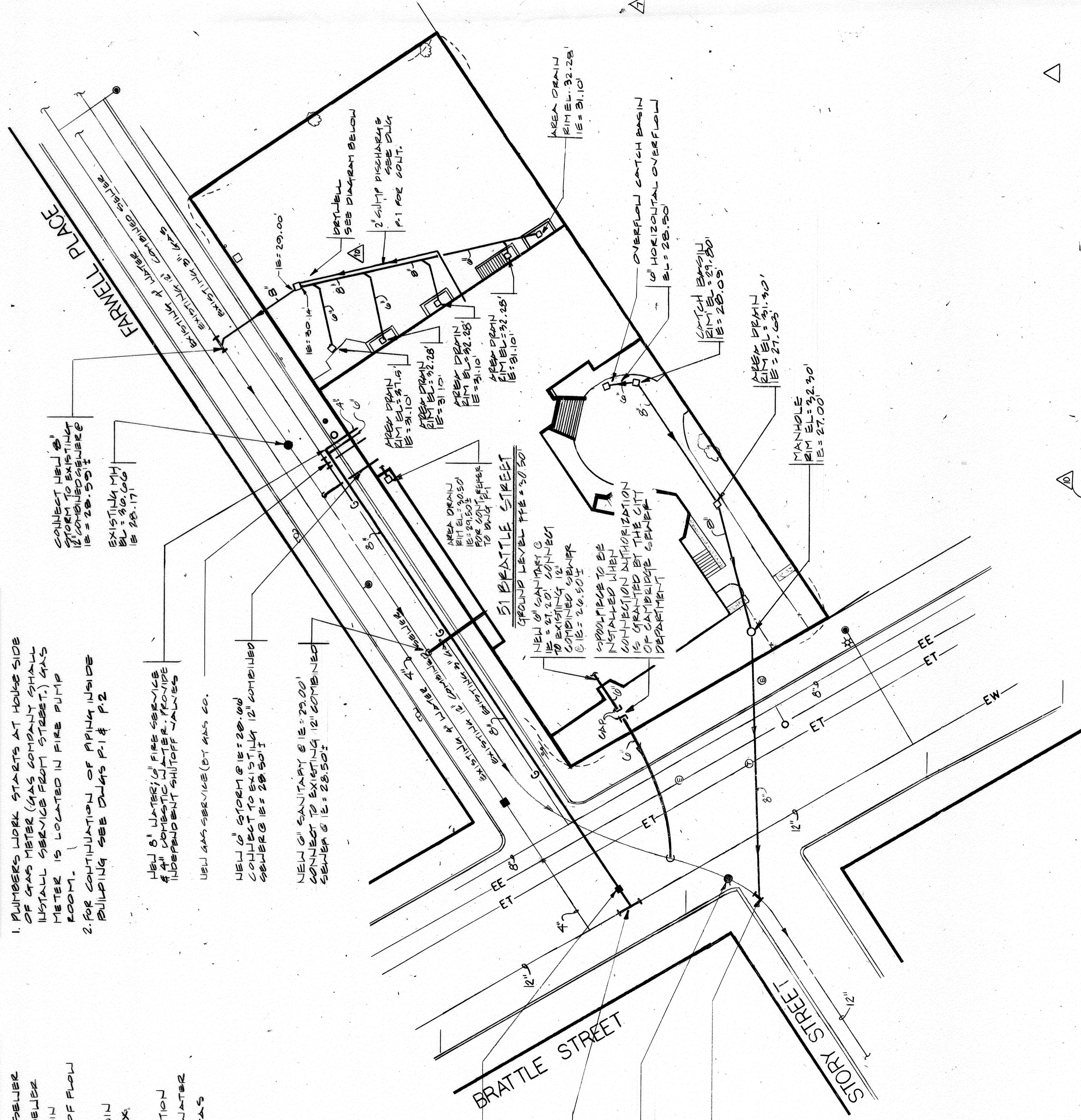
- LEGEND**
- COMBINED SEWER
 - SANITARY SEWER
 - STORM DRAIN
 - DIRECTION OF FLOW
 - MANHOLE
 - CATCH BASIN
 - VALVE BOX
 - HYDRANT
 - FIRE PROTECTION
 - DOMESTIC WATER
 - NATURAL GAS
 - MANHOLE

NEW 6" WATER SUPPLY SERVICE
CONNECT TO EXISTING 12" SERVICE
UNDER EXISTING CHUTE. VALVE
LOCATED AT 12" SERVICE

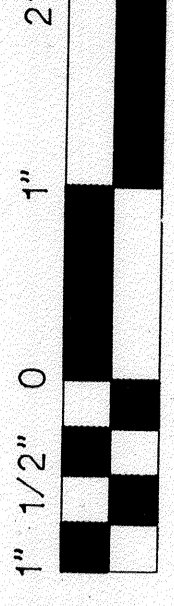
NEW 4" GAS SERVICE (BY GAS CO.)
CONNECT TO EXISTING 12" COMBINED
SEWER @ EL=28.50'

NEW 6" STORM @ EL=28.00'
CONNECT TO EXISTING 12" COMBINED
SEWER @ EL=28.50'

NEW 6" SANITARY @ EL=29.00'
CONNECT TO EXISTING 12" COMBINED
SEWER @ EL=28.50'



RECORD SET 15 SEPT. 1992



REVISION DATE DESCRIPTION

1	11-26-90	REVISED
2	12-4-90	REVISED

△ 9.26.91 AMENDMENT TO STREET CONDITIONS

SITE UTILITIES PLAN

DRAWN	DATE	APPROVED
SCALE	11-26-90	JOB NO.
P-0		